

# SPECIALIZED LABORATORY SERVICES

## COLOR BLOW-UPS FROM 16mm to 35mm:

Precision B&W Negatives  
Eastman Color Negatives  
Theater Prints in Color  
Low-cost Work Prints

## SUPERSCOPE ANAMORPHIC CONVERSIONS

From 16mm and 35mm  
Originals to

16mm or 35mm Squeezed Masters  
or Fine Grain Internegatives  
IN ANY ASPECT RATIO  
COLOR or B&W

## SPECIAL EFFECTS IN EASTMAN COLOR OR B&W

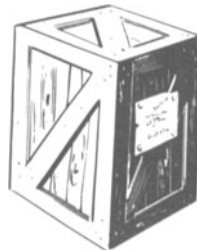
Our new Triple-Head precision printer reproduces the original edge numbers and dissolve cues in the inter-negative

Dissolves, Wipes, Montages,  
Zooms, Reductions, Blow-ups,  
Color separation masters,  
Shrunken film duplication and  
other SPECIALIZED LABORATORY SERVICES

Write us regarding your film  
printing problems

## FILMEFFECTS OF HOLLYWOOD

1153 North Highland Avenue  
Hollywood 38, California  
HOLLYWOOD 9-5808



# new products

(and developments)

.....  
Further information about these items can be obtained direct from the addresses given. As in the case of technical papers, the Society is not responsible for manufacturers' statements, and publication of these items does not constitute endorsement of the products or services.

## An Adaptable Automatic Exposure Control

By MARK MACINTOSH

[This paper was presented on October 10, 1956, at the Society's Convention at Los Angeles, by the author, Vice-President of the Traid Corp., 17136 Ventura Blvd., Encino, Calif.]

The AUTEX\* is a widely adaptable automatic exposure control that can adjust the aperture setting of practically any lens on any still, motion-picture or TV camera automatically, instantaneously and continuously to maintain the best film exposure during wide ranges of light level changes.

The AUTEX is particularly useful on any camera that is remotely placed so that a human operator cannot adjust the lens aperture for changing light conditions. Another very important application for such an automatic exposure control is on cameras that are to be "panned." When either a hand-held or tripod-mounted camera is being "panned," the photographer

\* Trademark.

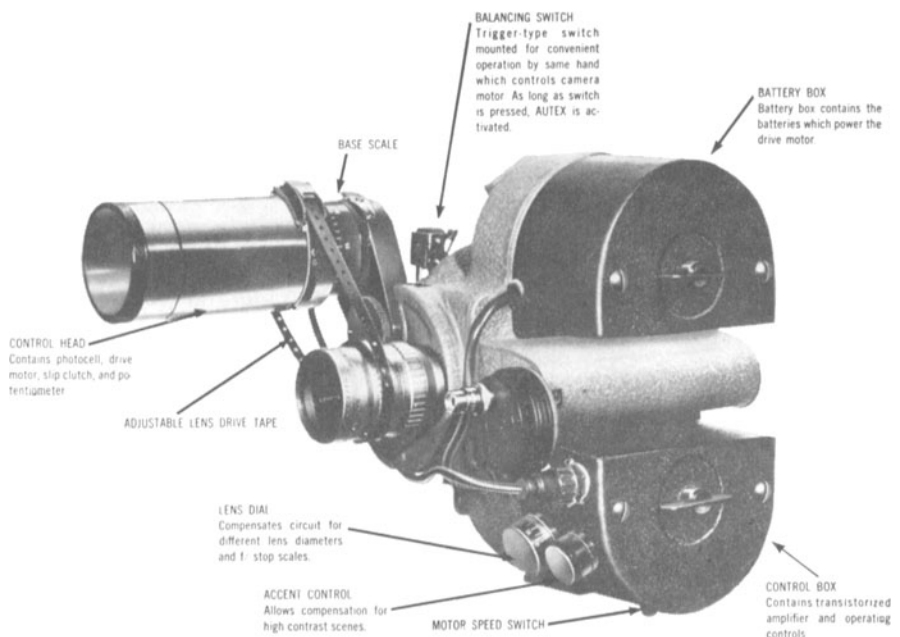
can follow a subject from deep shade to bright light, or vice versa, without stopping to change the lens aperture. As the camera follows the subject, the lens aperture is automatically and continuously adjusted to the changing light conditions with an exceptionally fast response rate of approximately five *f*-stops in one second.

The unusual sensitivity of this exposure control system allows full advantage to be taken of high-speed films and lenses using available light techniques.

This automatic exposure control is proving exceptionally useful to newsreel and documentary photographers, commercial motion-picture photographers, press photographers, military photographic instrumentation engineers and in industrial and research applications where motion-picture cameras and remote closed-circuit TV cameras are stationed in dangerous or inaccessible places.

Because of the ease with which it can be attached, this automatic control system may be readily applied to other situations requiring the positioning of a device in response to changes in light level, for example, artificial fill-in lighting might be controlled according to the prevailing natural light.

Here is how the AUTEX works: The cylindrical control head is installed on the face of the camera, adjacent to the lens and parallel to the optical axis (see illustration). The control head contains a photocell, a potentiometer, a slip clutch and a small, powerful drive motor. When the camera is pointed at a scene, the photocell in the control head accepts the same light as the lens. A change in photocell voltage, caused by a change in light level, trips a small relay. A unique transistor-relay circuit, developed especially for this equipment, controls the drive motor. The motor, powered either by a small battery supply or by an external source of direct current, rotates the control head so that the adjustable lens drive tape moves the lens iris ring in the proper direction to correct for the change in light level. A balancing potentiometer in the head "feeds back" the

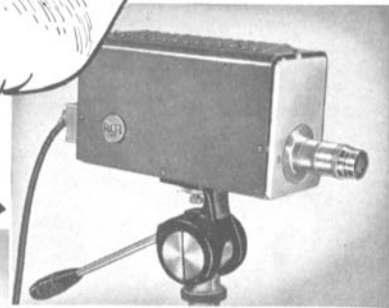




# Elgeet LENSES AT WORK

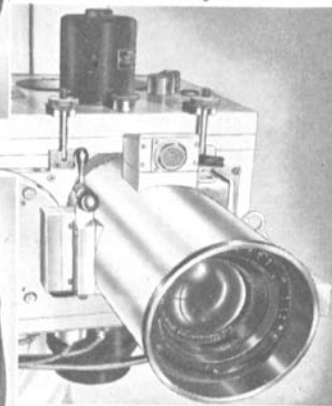
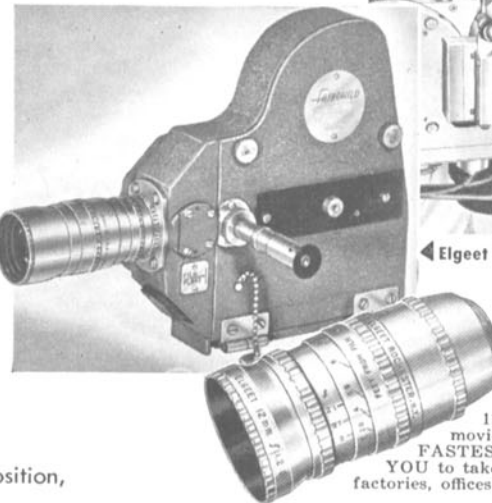
As the "eye" of the camera, the lens is one of the most important elements of a good camera... and is often a vital key to superior photography. The lenses of today are no longer simple one or two element lenses. Advanced cameras require fast, high quality lenses... lenses that will stop high speed action, produce pictures of superb detail and definition. To meet these requirements Elgeet combines advanced optical engineering, precision craftsmanship and modern electronic equipment... to produce lenses of optimum quality to serve your photographic needs. Elgeet's record of results can be attested to faithfully by leading industrial companies and governmental agencies.

Elgeet 2" f1.5 lens on RCA Vidicon (TV Eye) Camera ▶



◀ Elgeet 17mm f2.7 lens on Air Force N-9 Combat Recording Camera

Elgeet 10" f3.5 lens on CZR-1 Missile Tracking Camera ▶



◀ Elgeet 13mm f1.5 lens on Fairchild High Speed Camera

**ELGEET HAS OR CAN PRODUCE LENSES TO FIT ANY OF YOUR INDUSTRIAL NEEDS...**

Just send your requirements to the Industrial Division of **Elgeet**

or visit

**Booths 88-89**

at the International Photographic Exposition, Washington, D.C.

◀ **Elgeet Aspheric Golden Navitar** 12mm f/1.2 wide angle lens for 16mm movie cameras... the **WORLD'S FASTEST WIDE ANGLE LENS**... enables YOU to take movies in plants, factories, offices, etc. with "available light".

Elgeet is proud to have served the following outstanding companies: Radio Corporation of America  
Fairchild Camera and Instrument Corp. • DeJur Amsco Corp. • Keystone Manufacturing Co. • Bell & Howell  
G.E. Co. • Photographic Products, Inc. • J. A. Maurer Co. • Westinghouse • and many others

**Elgeet** OPTICAL COMPANY, INC. 844 SMITH STREET • ROCHESTER, N. Y.

lens setting to the circuit so that the relay opens and the motor stops when the lens is set properly for the new light condition.

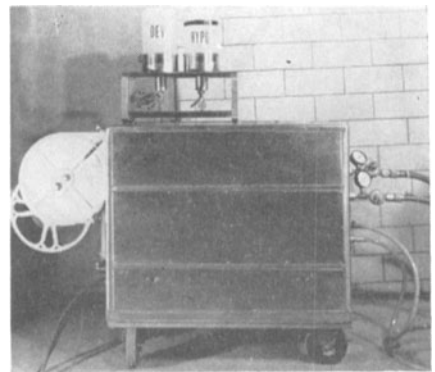
The circuit is electrically matched to various lenses by setting the lens dial. Settings for different film speeds and different shutter exposure times are easily made on the base scale on the control head. The ACCENT CONTROL\* allows the photographer to adjust the automatic control so that the lens aperture will open to a position either more or less than the setting called for by the average scene brightness. This permits instant compensation during filming of high contrast scenes where the object of interest is brighter or darker than

\* Trademark

the average scene brightness. With the automatic control properly adjusted for a specific lens and the ACCENT CONTROL set at zero, the lens *f*-stops will "track" accurately and consistently with light meter readings made from the camera position.

The complete kit consists of: (1) the control head and lens drive tape; (2) an adapter to attach the control head to a specific camera; (3) small box (or two small boxes as shown in photograph) containing all circuitry, batteries, calibration dials, etc., necessary to operate the equipment.

The AUTEX was designed and is manufactured by Flight Research, Inc., Richmond, Va., and is distributed west of the Mississippi River by Traid Corp.

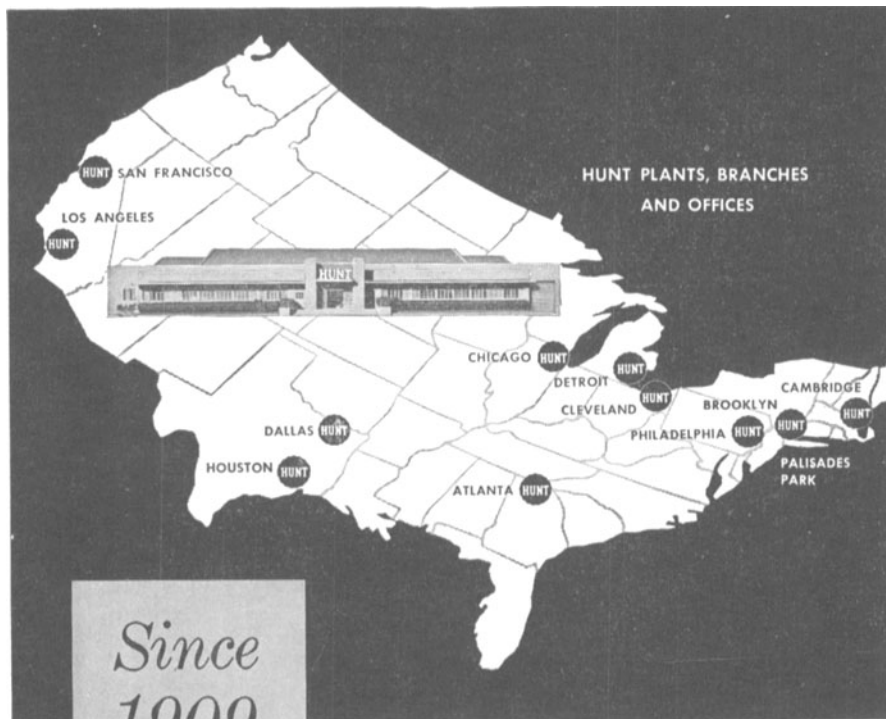


**A portable 16mm film processing machine** designed and fabricated by R. D. Whitmore, Jr., under the direction of CBS Engineering and CBS News Engineers, was used commercially for the first time during the Presidential Inaugural weekend. Designed for fast processing of spot news film reports, high-quality negative is reported to be developed at 40 ft/min and at 80 F. Speed is adjustable from 0 to 40 ft/min through a friction drive and the solution temperatures are adjustable from 80 to 100 F. When removed from its wheeled dolly the machine is 36 in. long, 29 in. high and 20 in. wide.

Its power requirements are supplied through two 110-v, 15-amp cables that plug into standard house outlets. Water is supplied through hot and cold water hoses which may be connected in a house to laundry faucets. It also utilizes a drain pump and a drain hose. It is daylight operated and magazine loaded. Replenishment is supplied through flowmeters from bottles supported by a removable assembly. All controls and switches are recessed into the top of the machine which has been designed for simplicity in servicing and operation. Concentrated developer and hypo are available and can be mixed in the machine during start-up. A combination overall or edge waxer has been included with the removable take-up assembly to make it a complete film processor that does not require additional auxiliary compressors, blowers, pumps, heaters or controls. Further information about the machine, which is expected to be produced at about \$7500, is available from Ralph D. Whitmore, Jr., 245 West 55th St., New York 19.

**The André Debré Mfg. Co** has been acquired by the Belock Instrument Corp. of College Point, N.Y. The André Debré Mfg. Co. has been distributor of commercial motion-picture and photographic equipment of Etablissements André Debré, Paris. Operating as a wholly owned subsidiary of Belock and under a new 10-year franchise, the André Debré Mfg. Co. will have the exclusive rights to manufacture and to sell all products of the French firm, throughout the United States, Canada, Cuba, Formosa and the Philippines. Gilbert Ruellan, son-in-law of André Debré, founder of the French company, is a director of the new organization. Edgar M. Burlin continues as President of André Debré Mfg. Co.

Harry D. Belock, President of the Belock Instrument Co., is a member of this Society, and has been active in the technical development of motion-picture equipment.



Since  
1909

# HUNT

*has never failed a customer!*

Hunt, the largest exclusive manufacturer of photographic and graphic arts chemicals in the United States, is an unfailing source of supply to the motion picture industry. Despite strikes, manufacturing shortages—*nothing* has ever stopped us from making deliveries. We'll trans-ship from one depot to another when necessary—but your order will be there when promised.

**FOR RESEARCH ASSISTANCE WRITE TO:**  
**THOMAS T. HILL,**  
*Director Photographic Research*

**FOR TECHNICAL SERVICE WRITE TO:**  
**CHARLES F. LO BALBO,**  
*Motion Picture Technical Advisor*

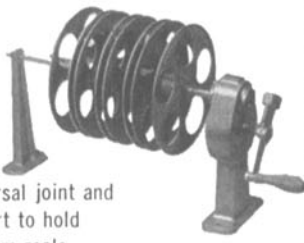


**PHILIP A. HUNT COMPANY**  
PALISADES PARK, N. J.

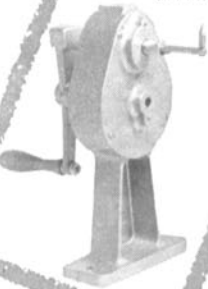
Chicago • Cleveland • Cambridge • Brooklyn • Atlanta • Dallas • Los Angeles • San Francisco

**HF**  
**REWINDS and ACCESSORIES**


REU-1  
 rewind w/universal joint and end support to hold up to 5 - 35mm reels.



RE-1  
 rewind w/1 reel 35mm shaft



REF-1  
 friction control rewind w/1 reel shaft 35mm.



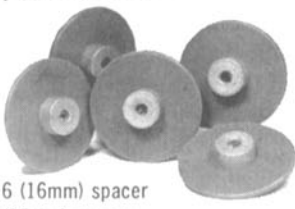
RETWC-1  
 rewind w/16 - 35mm combination tightwind



SB-1  
 swivel base attachment for rewind



SP-16 (16mm) spacer  
 SP-35 (35mm) spacer



IMMEDIATE DELIVERY FROM STOCK... AT BETTER DEALERS EVERYWHERE


ASC-35  
 35mm aluminum shaft male or female cores  
 ASC-16 (16mm)



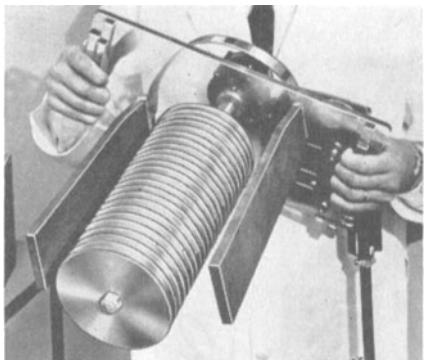
SL-1  
 spring locks



LS-1  
 leader stanchion rewind attachments



*precision film editing equipment/reels, cans and shipping cases*  
**HOLLYWOOD FILM COMPANY**  
 956 N. Seward Street, Hollywood 38, California/HOLLYWOOD 2-3284  
 branch office:  
 HOLLYWOOD FILM COMPANY  
 630 Ninth Avenue, New York, New York/Circle 7-1630



**A new hypo and silver recovery unit, called the Rotex, is claimed to be 95% effective.** Usable silver in bulk form is recovered from hypo solutions by utilizing an entirely new process which involves both physical-chemical and electrolytic principles. The manufacturer of the unit reports that Rotex not only saves silver, but also cuts hypo costs 80% by reactivating the used solution. The development of this equipment was described in the August 1956 *Journal*, pp. 429-431.

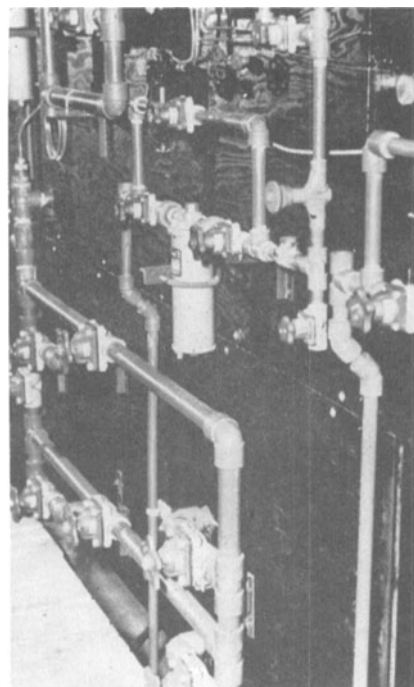
The device is marketed to photo-finishers, industrial film processors, X-ray laboratories and radiologists. Price of the complete unit is \$395. For further particulars, write W. B. Snook Mfg. Co., Inc., 751 Loma Verde Ave., Palo Alto, Calif.

**Pyral, the French manufacturing firm offering magnetic-stripping equipment, has issued an information bulletin telling some-**

thing about the history of the company and describing the services it now has to offer to the industry. In the thirties Pyral developed a process for coating recording disks which was adopted in this country by Audio Devices and in England by F.M.I. With the coming of magnetic recording, Pyral concentrated on this medium and now specializes in the manufacture of prestripped magnetic recording film, both 16mm and 35mm, and of magnetic-stripping machines. The bulletin also offers some technical advice on how to shoot and edit films with magnetic stripping. The text is in English. Copies may be obtained by writing to Société Pyral, 47 Rue de l'Echat, Créteil (Seine), France.

**Foreign language versions of business films are now being produced by the combined efforts of the Berlitz Translation Service, 50 Rockefeller Pl., New York 20, and Tom Boggs Organization, Inc., 595 Madison Ave., New York.** Sponsored industrial and commercial motion-picture and slide films, including films for training and instruction, can be converted to polyglot versions.

**J. G. McAlister, Inc., announces that their complete line of lighting and production equipment is now available in Canada through Cinequipment International's new Toronto headquarters.** Producers are asked to visit or write Cinequipment International, 88 Fourteenth St., Toronto 14, Canada for information regarding sales or rentals.



**A new plastic piping material has been installed by Pathecolor, Inc., in its new color processing plant at Bayonne, N.J.** Ten thousand feet of rigid polyvinyl chloride pipe is in use in the circulating and replenishing systems of the new Kodachrome and Kodacolor processing machines, and in the paper processing systems.

The pipe conveys potassium ferricyanide in 5% solution at 80 F, sulfuric acid 1% solution at 80 F, and hydrobromic acid 3 to 4% solution at room temperature. The Alloy Tube Div. of The Carpenter Steel Co., Union, N.J., which supplied the pipe, says that it is completely resistant to all of the chemicals involved and that product purity is assured because there is no plasticizer in the pipe to contaminate the chemical solutions used.

The pipe, reported to require virtually no maintenance, was installed in one-fifth the time that steel pipe would have called for. Changes in the piping system are facilitated by the fact that the pipe can be cut in seconds with a hacksaw and reassembled in a few minutes in almost any manner desired. Fittings are of the socket type, and are installed by cleaning with methyl ethyl ketone, applying a solvent cement, pushing the fitting onto the pipe, and twisting it 90° into place.

Used in the Pathecolor installation are 3/4-, 1-, 1 1/2- and 2-in. pipe sizes, and various fittings including tees, elbows, reduction bushings, unions, and needle and gate valves. The manufacturer says that the pipe is a normal impact grade having high resistance to acids, high strength, toughness and rigidity, and that it withstands both oxidizing and reducing conditions. Corrosion resistance is such that Pathecolor is said to expect at least 10 years service from the new piping system.

**Super Cinex, a lamp system designed for the special screen-brightness requirements of giant indoor and drive-in theaters has been announced by Radio Corp. of America, RCA Theatre Equipment, Camden, N. J.** The system when operated at 155

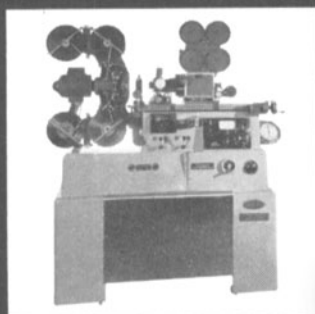
*if* optical printers

*are your problem*

**oxberry**

*has the*

**answer**



SPECIAL EFFECTS  
STEP OPTICAL PRINTERS

- Standard Series
- Master Series

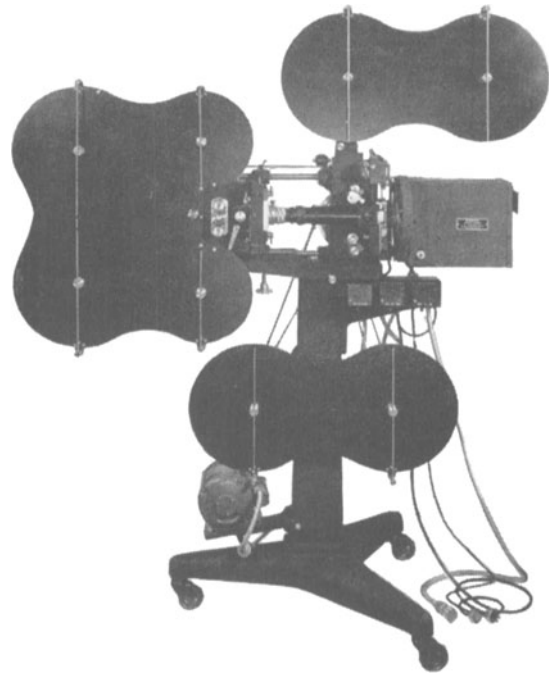
*The leading developer of  
optical printing equipment*

the **ANIMATION EQUIPMENT** corp.  
38 HUDSON STREET, NEW ROCHELLE, NEW YORK

■ See us at the SMPTE Convention - Booth 54

# DEPUE

## ***Optical Reduction Printer***



**T**he Depue Reduction Printer has been a leader and pioneer in the film printing business, and for more than a quarter of a century has served the industry and laboratories—and served them well!

It is our continuous objective to maintain that leadership and continue to design and manufacture reduction printers that will enable you to do quality printing in an efficient manner.

The name "DEPUE" is your assurance of dependability and precision.

Your inquiries regarding this equipment will be welcome and receive our careful attention.

Oscar F. **CARLSON** Company

2600 Irving Park Rd.

Chicago 18, Illinois

FOR *Your* EVERY NEED  
THE EASY TO USE

SENSATIONAL NEW  
**Movie-Mite**  
*Supreme*

Custom features at mass produced price

SAVE  
**1/3**



**SMPTE MEMBERS**

Here's a quality projector designed for professional use with rugged, precision construction. Guaranteed a lifetime. Easiest to use. Easiest to carry. Only 27½ lbs.

Complete \$298.50

**SPLICE-O-FILM**



The finest hot automatic splicer in the world. Fastest, strongest professional splices. Only \$99.50

**Harwald STORAGE CABINETS**



for Beauty  
Safety  
Convenience  
Efficiency  
Economy.

**Moviscop VIEWER**

The very finest 16mm action viewer. Precision German mechanism. For producers—T.V.—Labs.



Please check squares above for complete information on any or all items shown and mail this ad to:

**THE HARWALD CO.**

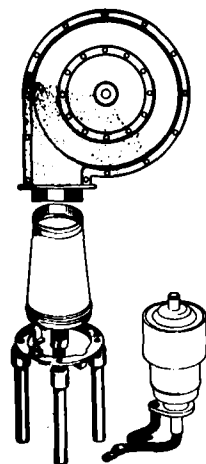
1216 Chicago Ave., Evanston, Ill.  
Phone: Davis 8-7070 SJ

amp with a 13.6mm high-intensity positive carbon is reported to provide considerably more available light on screen with better distribution than lamp systems operated at 125 amp with a 11mm positive carbon. The newly developed system features a high optical speed of  $f/1.6$  and includes a Super Cinex arclamp, a 12-phase selenium rectifier and an a-c 9-gal water recirculator with radiator and radiator fan. The system also features a specially designed power supply, built around the 12-phase selenium rectifier, to provide uniform, constant power up to 165 amp.

Various types of anechoic chambers (enclosures echo-free within a specific sound frequency range) are described in a booklet issued by the Eckel Corp., 155 Fawcett St., Cambridge 38, Mass. One of the newer types is a portable chamber designed for scaled-down testing of small microphones and miniaturized electronic equipment. The booklet is available from the company upon request.

A new brochure on fused quartz has been published by Amersil Co., Inc., one of the Engelhard Industries. It also covers fused silica and the uses of these materials in furnaces, laboratory equipment, lamps, optical assemblies and chemical apparatus. The booklet is available from Amersil, at 685 Ramsey Ave., Hillside 5, N.J.

Magnecord, Inc., a division of Midwestern Instruments, Inc., Tulsa, has issued a new catalogue of its entire line of professional magnetic tape recorders. The 15-page catalogue is illustrated by photographs and contains specifications of all models. It is available from the factory at 1101 S. Kilbourn Ave., Chicago 24.

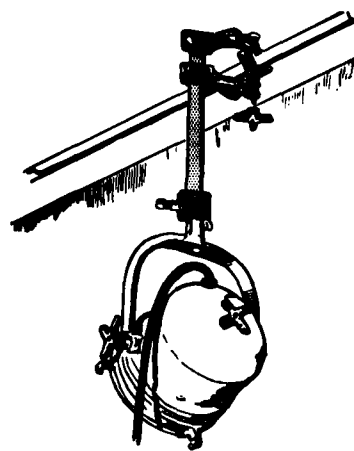


A low-cost socket for high-power, high-frequency tubes has been announced by the Radio Frequency Co., 44-46 Park Street, Medfield, Mass. The socket is especially designed for use with tubes such as the 3X2500-A and F3 and the 3X-3000A1 and F1, and similar tubes with an anode of 4¼ in. A part of the new design is the ring-type contact all around the anode, to help eliminate hot spots. It accommodates a 1-, 2- or 3-tube design. A ring clamp is provided for mounting a silicone rubber air duct for bringing air from a blower to cool the tube. The base price of the socket is \$24.50.

**CLASSIFIED ADVERTISING**

First three lines \$5.00  
Each additional line \$1.00  
per inch \$13.00

DID YOU EVER SPOIL WORK because your lights dimmed unexpectedly? There is a simple, inexpensive remedy—a constant voltage transformer which you can afford. Drop us a postcard. M. R. Company, Box 1220-FC, Beverly Hills, California.

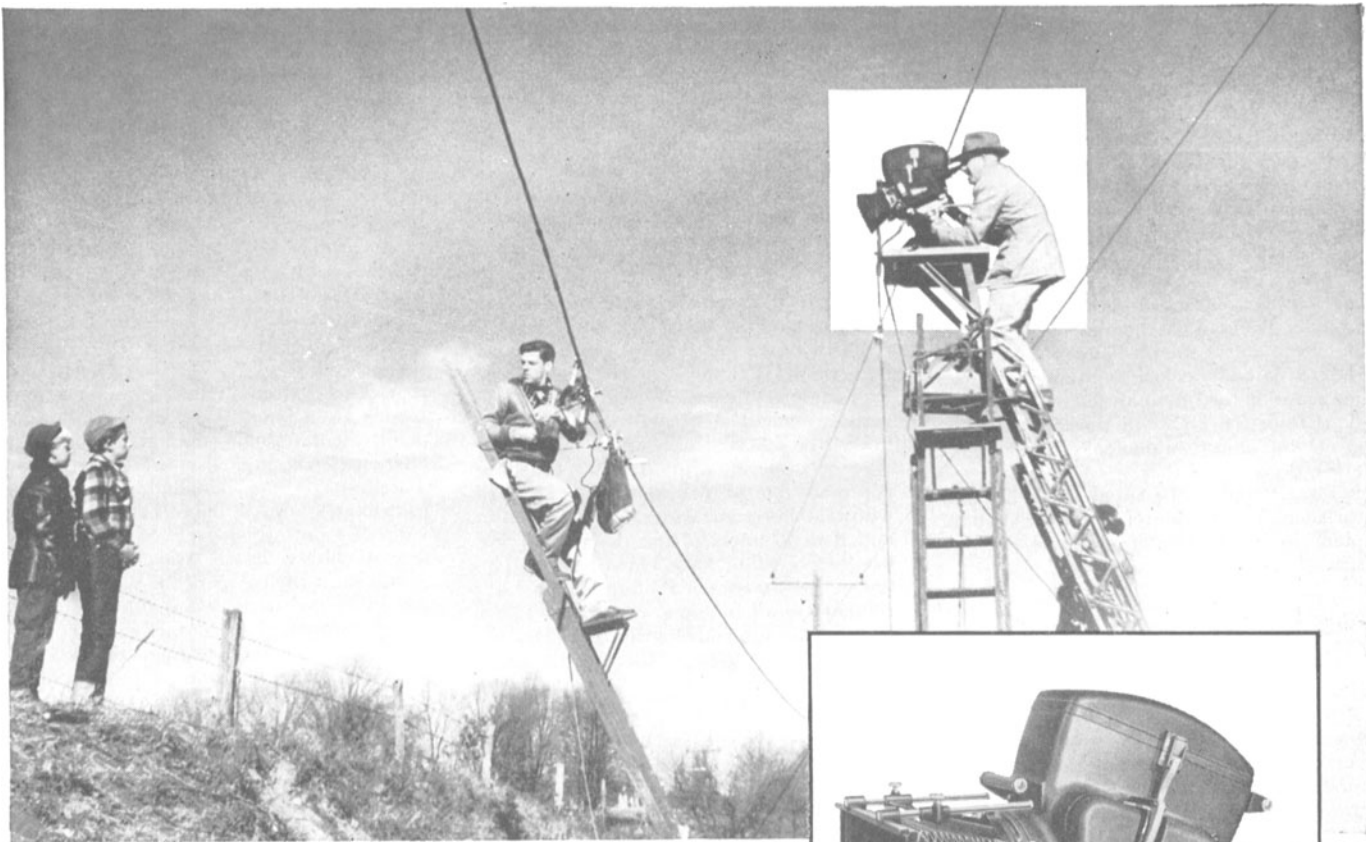


The Grover Grip, a product of the Natural Lighting Corp., 612 W. Elk Ave., Glendale 4, Calif., is designed to solve the problem of attaching bulky lighting equipment to large spans, such as doorways with moldings, desk drawers or wide tables, or across the tops of movie flats or partitions.

The new grip consists mainly of a carpenter's type of clamp with a span of 8½ in. adjustable to round or flat surfaces. The unused portion of the bar supports a small pad which may be revolved. This in turn has studs on it for either ¼- or ⅜-in. bushings. The studs are undercut so that lamps may be revolved without marring. A fast-threaded screw with a handle tightens the clamp to the width of the surface to be applied. The pad is then moved along the remaining portion of the bar to hold the light in the desired position. The V block for round surfaces and the flat pad end are rubber-protected to guard against marring polished surfaces.

The grip is reported to be able to maintain a 750-w spot in a horizontal position. It is priced at \$6.85. An accessory that provides an adjustable radiator hose-type clamp adaptable to either standard or porcelain screw sockets for the use of ordinary reflectors is priced at \$1.85. The grip is 15 in. long and weighs 1½ lb.

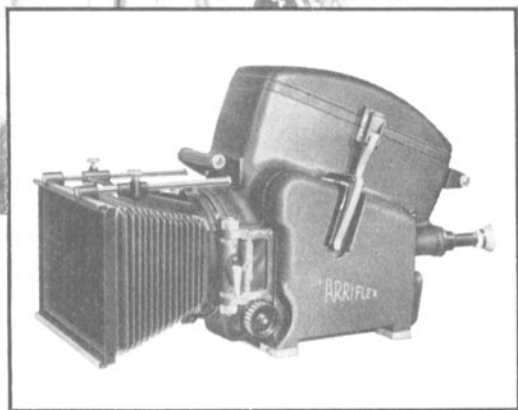
The firm of United Catalog Publishers, Inc., has moved from 106 Lafayette St, New York, to its own building at 60 Madison Ave., Hempstead, N.Y. A new catalog service, Audiofile, for hi-fi and sound distributors, will be at the same address. Pricing Service and File-O-Matic also occupy space on the premises. The firm publishes The Radio-Electronic Master, a buying guide for the industry.



Why SOUND MASTERS Selected...

The **ARRIFLEX 35 Model IIA**

To Shoot '*Speechless By Mistake*' for the Bell System



The Bell System wanted a color film that would help prevent accidental damage to buried and aerial telephone cables by dramatizing some of the common causes of such damage and their effect on vital communications. SOUND MASTERS of New York was selected to make the film.

The script called for 'on location' filming — in fields, on highways, in ditches, on 'Main Street'. More than 95% of the film required live, lip-synchronized sound. A versatile, easily maneuverable camera was needed for this job.

SOUND MASTERS selected the Arriflex 35 Model IIA with Synchronous Motor and Sound-Proof Blimp — and filmed all the sequences with this equipment within a period of five weeks. *Speechless By Mistake* has been completed and will soon be released by the local Bell Telephone Companies for public showings.

Says Mr. F. C. Wood, Jr. vice president in charge of production, "We acquired and used the Arriflex outfit

because it was the lightest, most compact equipment we could find. It would have been next to impossible to have done the job so quickly and easily with any other camera. The Blimp was perfect both indoors and out.

"Needless to say, we were pleased with the results, as was also the client. The pictures were rock steady and needle sharp — thanks to the new film gate and intermittent, and to those wonderful Schneider lenses. The whole film was a complete success.

"The most wonderful thing about the whole deal is that the price of the complete outfit was hardly more than what it would have cost us to rent other equipment."

And Mr. Wood's experience is, by no means, different or unique, for many other producers and cameramen have discovered the economy, the quality and the versatility of the Arriflex 35. No more easily manageable camera exists anywhere. Yet, it has every facility and convenience for truly first-rate filming.



Write for complete information to:

Sole U.S. Agents • **KLING PHOTO CORP.**

257 Fourth Ave., New York 10, N. Y.

7303 Melrose Ave., Hollywood 46, Cal.

**The Lawrence Color Television Tube** has been licensed to Litton Industries by Chromatic Television Laboratories, Inc., a subsidiary of Paramount Pictures Corp. Plans are to use the tube in radar and air traffic control, and Litton has also acquired the Emeryville, Calif., facilities of Chromatic Television Laboratories, where the Lawrence tube, the invention of Dr. Ernest O. Lawrence, is produced. Proposed military uses of the tube include simplified identification of enemy aircraft. Hostile aircraft can be shown in one color and friendly planes in another on a radar screen. Bombers and fighter planes can also be differentiated by color. The Lawrence tube may also be used to analyze ground operations from the air, with the identification of moving objects in one color and stationary objects in another.

The Lawrence tube has also been licensed to Allen B. Du Mont Laboratories which plans to incorporate it in home receiver sets.

**Altec Lansing Corp.** has announced the opening of its new sound products plant at 1515 S. Manchester Ave., Anaheim, Calif. The huge building, completed at a cost of 1½ million dollars, houses such advanced engineering facilities as an anechoic chamber, large design laboratories and modern production machinery to move products through all stages of manufacture including packing and shipping. Altec's corporate offices and central headquarters are also in the new building.

**Raytone Screen Corp.**, 165 Clermont Ave., Brooklyn 5, N.Y., has developed a "High Density" White Screen Paint that is a much thicker version of the firm's Super White. Applied with a roller, this extra-heavy paint results in an uneven texture, much like an orange-peel effect, to give a surface which resists hot-spots (highlights) during rain and helps eliminate some other tower imperfections.

**Fourteen different models of drive-in theater screens** are shown in a booklet recently issued by Selby Industries, Inc. Each model is pictured on a separate sheet, with complete description and listing of the various general characteristics of a Selby tower, the different sizes of the towers, the types of construction, etc. The new brochure points out that Selby towers are designed to withstand hurricane winds of up to 125 mph and that no tower of this design has ever been reported to have blown down. The towers are guaranteed insurable and acceptable to all building authorities. For a copy of the brochure, write Selby Industries, Inc., 1350 Ghent Hills Road, Akron, 13, Ohio.

**A fully transistorized 15-lb portable amplifier** for use in remote radio and television broadcast service has been made available commercially by the Radio Corp. of America. The amplifier, BN-6A, a four-channel type, is designed to provide the amplification and control facilities neces-

sary for transmission of remotely originated signals to a broadcast studio via telephone lines. It will also have application in closed-circuit TV service and as a remote mixer for industrial and school sound systems.

**A stabilizing amplifier** designed to eliminate such low-frequency disturbances as hum, bounce, surges and tilt in both monochrome and color television transmissions has been announced by Radio Corp. of America, Broadcast and TV Dept., Camden, N. J. Known as the TA-9, the amplifier measure 19 × 14 × 5 in.

**Kodak Wratten Filters**, an Eastman Kodak Data Book, has been revised to include the latest information available on characteristics and uses of these filters. The 80-page booklet includes colorimetric coordinates and luminous transmittance values for both tungsten light and daylight for all filters listed. Chromaticity diagrams show the colors of the various Wratten Filters when they are illuminated by either tungsten light or daylight. The new publication has sections on Wratten filters for photomechanical work, additional filters for exposing Kodak color films and special new filters for densitometry of color films and papers. The booklet is available from Kodak dealers at a price of 75 cents.



## employment service

.....  
 These notices are published for the service of the membership and the field. They are inserted three months, at no charge to the member. The Society's address cannot be used for replies.

### Positions Wanted

**Administrative Engineer.** The SMPTE's Staff Engineer, Henry Kogel, is seeking a new position, after 6 years working with SMPTE Engineering Committees and the motion-picture standards program; also serving as Secy, American Standards Assn. Sec. Committee PH22, and Tech. Secy, International Standardization Orgn. Tech. Com. 36, Cinematography; 2 years, previously, develop. engr. with Sperry Gyroscope Co.; B.S. Elec. Eng., Columbia Univ., 1948, after military service as radio off.; age, 37; married; N. Y. area pref.; complete résumé upon request—Henry Kogel, 19-24 202 St., Bayside 60, N. Y.; Tel. BAyside 9-3574, or at SMPTE, LOngacre 5-0172.

**Photographic Development Engineer.** Freelance or consultation. Long experience in design, development and production engineering of both military and commercial motion-picture and still cameras and projectors, enlargers, film editors, lapsed time and sequence cameras, viewers, automatic aperture controls, stereographic, press cameras, etc. Military and commercial references available on request. Write: P.O. Box 601, Jamaica 31, N.Y.

**Apprentice Film Editor.** Seeks summer position. Currently cinema student at CCNY; previously at UCLA with top grades. Meyer Odze, 1669 Macombs Rd., Bronx 53, N.Y.

# A LIVELY PICTURE + A L-I-V-E SCREEN = A LIVELY BOX OFFICE

Today's films may be only *half-real* to your patrons if your "half-there" screen deprives them of *half* the entertainment value. A l-i-v-e screen surface that mirrors *the reel* story will make your pictures pay off at the box office. YOU'VE NEVER SEEN A PICTURE "L-I-V-E" UNTIL YOU'VE SEEN IT ON A

## VICRA-LITE

### LENTICULAR SCREEN

"the screen of optical precision"



See your theatre supply dealer—  
 or write for factual booklet, containing  
 sample swatch—but do it TODAY!

### L. E. CARPENTER & COMPANY

VICRA-LITE SCREEN DIVISION • Empire State Building, New York 1, N.Y.

In Canada: General Theatre Supply Co., Ltd., Toronto