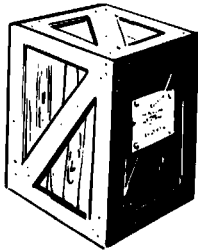


# new products

(and developments)

.....  
 Further information about these items can be obtained direct from the addresses given. As in the case of technical papers, the Society is not responsible for manufacturers' statements, and publication of these items does not constitute endorsement of the products or services.

A silicon carbide rectifier has been operated at temperatures up to 1200 F, according to a recent announcement of the General Electric Research Laboratory, Schenectady, N.Y. Similar devices made with semiconductor materials, notably silicon, have been able to operate up to only the 400-500 F range. Basic studies of silicon carbide, a material best known as an abrasive, are part of a GE research program aimed at exploring a variety of compound materials for use in solid-state electronic devices. It was emphasized that the silicon carbide rectifier is still in laboratory development.



An automatic iris and target control unit has been developed by General Precision Laboratory Inc., Pleasantville, N.Y., for use with its industrial and institutional television system. The unit, which weighs 13 lb, can be used with any GPL television system or with any custom system with remote iris operation, can also be used with remotely controlled zoom lenses, and is designed to compensate automatically for wide variations in light — up to 16,000 to 1. It operates from 117 v a-c, 60 cycles/sec.

The ubiquitous eye of the TV camera is now watching New York subway riders for the purpose of catching the larcenous few who sneak under the turnstiles or through the exit gates, thereby defrauding the Transit Authority of rightful revenue. This Orwellish application of closed-circuit television is in operation on an experimental basis at the Independent station at 8th

Ave. and 42 St. A small camera installed by General Precision Laboratory Inc., Pleasantville, N.Y., is mounted on a ceiling beam and is focused on the exit gates. Pictures of the area appear on a monitor screen located in a change booth 175 ft from the gates. This experiment is solely for the purpose of apprehending "free-riders," but consideration is being given to the use of television to "police" entire platforms at night and in little used stations as a deterrent to crime.

Multi-Tron Laboratory, Inc., 4624 Washington Blvd., Chicago 44, has announced a new cathode-ray tube called the "Pure Signal" Tube. The tube is described as being of "multiple beam" design and is said to take a signal directly from the crystal detector. Use of the tube is reported to eliminate the necessity for the video amplification circuitry section in any current TV chassis. Pilot model tubes are available to set manufacturers under a licensing agreement.

A newly-designed lens mount is now standard equipment on the latest models of the Oxberry Animation camera, according to a recent announcement by the Animation Equipment Corp., 38 Hudson St., New Rochelle, N.Y. The new lens mount has a ball-bearing, spring-loaded mechanism designed for accuracy and precision. A dial indicator registers actual distance from film plane to lens in thousandths.

**FAST!**

Machines of Filmline manufacture installed at: Pentagon Bldg., Microfilm division, Washington, D.C.; U.S. Naval Research Laboratory; U.S. Public Health Service; U.S. Treasury Department (15 machines); Atomic Energy Commission; I.B.M.; G.E.; Pratt & Whitney Aircraft; McDonnell Aircraft; Universities of: Texas, Notre Dame, Indiana, California, Alabama, Miami, M.I.T.; TV Stations: WHAS, WMUR, WISH, WBRE, WNCN, WJAR, WTRI, WFMY, WJHP, WCSC, WTVS, WTVJ, KARK, KDUB, WTVR. WRITE FOR DETAILS AND LITERATURE

develops reversal film at 1200 ft. per hr.  
 negative-positive film at 1200 ft. per hr.

## MODEL R-15 REVERSAL FILM PROCESSOR

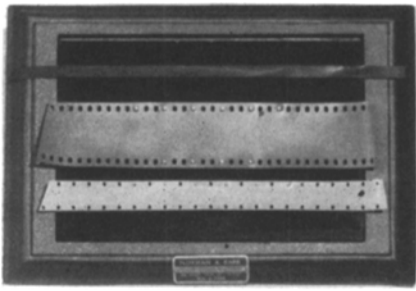
- EXCLUSIVE OVERDRIVE eliminates film breakage, automatically compensates for elongation; tank footage stays constant.
- EASY TO OPERATE, needs no attention.
- VARIABLE SPEED DRIVE, development times from 1½ to 12 minutes.
- COMPLETE DAYLIGHT OPERATION on all emulsions, no dark-room needed.
- FEED-IN ELEVATOR & 1200-FT. MAGAZINE permits uninterrupted processing cycles
- STAINLESS STEEL tanks, air squeegee, recirculation fittings, air agitation tube, lower roller guards.
- FORCED WARM AIR DRYBOX, uses no heating lamps.
- Double Capacity Spray Wash
- Filtered Air Supply
- Uniform Tank Sizes
- Self-Contained Plumbing
- Cantilever Construction
- Ball Bearing Gearbox
- Size: 76" x 50" x 24"
- Weight: Approx. 475 lbs.

only  
**\$2795**

F.O.B.  
 Milford, Conn.

LOW COST FINANCE—UP TO 5 YEARS

**Filmline corp.** Milford, Conn. Dept. JJU-57



A **Film Repair and Splicing Block** has been announced by Florman & Babb, Inc., 68 W. 45 St., New York 36. It uses Magic Mylar transparent splicing tape to repair badly torn and gouged 35mm slide-films and 16mm motion-picture films. It is precision machined for accurate registration of 35mm and 16mm film on sprockets as well as for splicing  $\frac{1}{4}$ -in. magnetic recording tape. It is priced at \$19.95.

A new self-sticking **Miniature Marker** for identifying small diameter wires, miniature electric components and subminiature circuits is manufactured by the W. H. Brady Co., 727 W. Glendale Ave., Milwaukee 9, Wis. The Markers are designed to stick and stay stuck to any size wire  $\frac{5}{32}$  in. and smaller, including plastic coated wires. The  $\frac{3}{16} \times \frac{1}{4}$  in. markers are printed in numbers and letters permitting identification of small wires from any angle. The Brady Bulletin No. 130-2 together with usable samples will be sent upon request.

Eastman Kodak Company has placed on the market its fastest photographic film, Kodak Royal-X Pan Film. It is Panchromatic, Type B (high green, low red) and is reported four times faster than Kodak Royal Pan Film when both are given equal development. Ratings as high as ASA 8000 have produced easily printable negatives. Especially designed for press and commercial use where existing light photography is desirable, the film has had extensive pre-testing. Enlargements up to five or six diameters do not show excessive graininess. Recommended development is in DK-60a, 6 to 10 min at 68 F. The film requires regular washing procedure. Kodak Royal-X Pan Film is available in 25-sheet packages in commercial sizes up to 8 × 10 in.

A color film said to be 10 times faster than traditional color films is now being marketed by Ansco. Called Super Anscochrome, the new film can be used to make color snapshots by light of an ordinary 40-w fluorescent tube or by the daylight coming through a window. Exposure index is 100 with normal processing, and may be 200 with increased developing time. Basic exposure is 1/500 sec at f/6.3. It is possible to use shutter speeds as high as 1/500 to 1/1000 sec, and it is said that color pictures are now possible in extremely unfavorable lighting — even in the rain, if the photographer wishes.

Super Anscochrome is now available in daylight type in 120 size rolls and 35mm magazines for still cameras.



The **Genarco Super-Ace**, manufactured by Genarco Inc., 97-10 Sutphin Blvd., Jamaica 35, N.Y., is a high-intensity carbon-arc spotlight operating on a-c from a regular 115-v 20-amp line. It is designed particularly for throws over 125 ft. Incorporated in it is the new Genarco Arc Lamp Model AC.3, recently developed for Army searchlights. The light emitted by the double carbon is projected into a 16-in. diameter reflector. Operation can continue for 2½ hr without recarboning. Light output is 14,000 lm. The net weight is 260 lb; total shipping weight is 400 lb.



The **SONY C37A**, a new high-precision condenser microphone manufactured in Japan by Tokyo Tsushin Kogyo, Ltd., is distributed by Intersearch, 7 Arcadia, Cincinnati 2, Ohio. The microphone uses a titanium diaphragm, specially designed and hand made. Reports on tests in an anechoic sound chamber show the microphone to be flat within  $\pm 2$  db from 20 to 18,000 cycles. A switch permits the selection of omni- or unidirectional response and three switched low-frequency responses are provided. Output is -70 db. The microphone is priced at \$300, including power supply.

## Send Your Film To The Complete 16MM Service Laboratory

Unsurpassed for . . .

**SPEED**

**QUALITY**

**Personalized  
SERVICE**

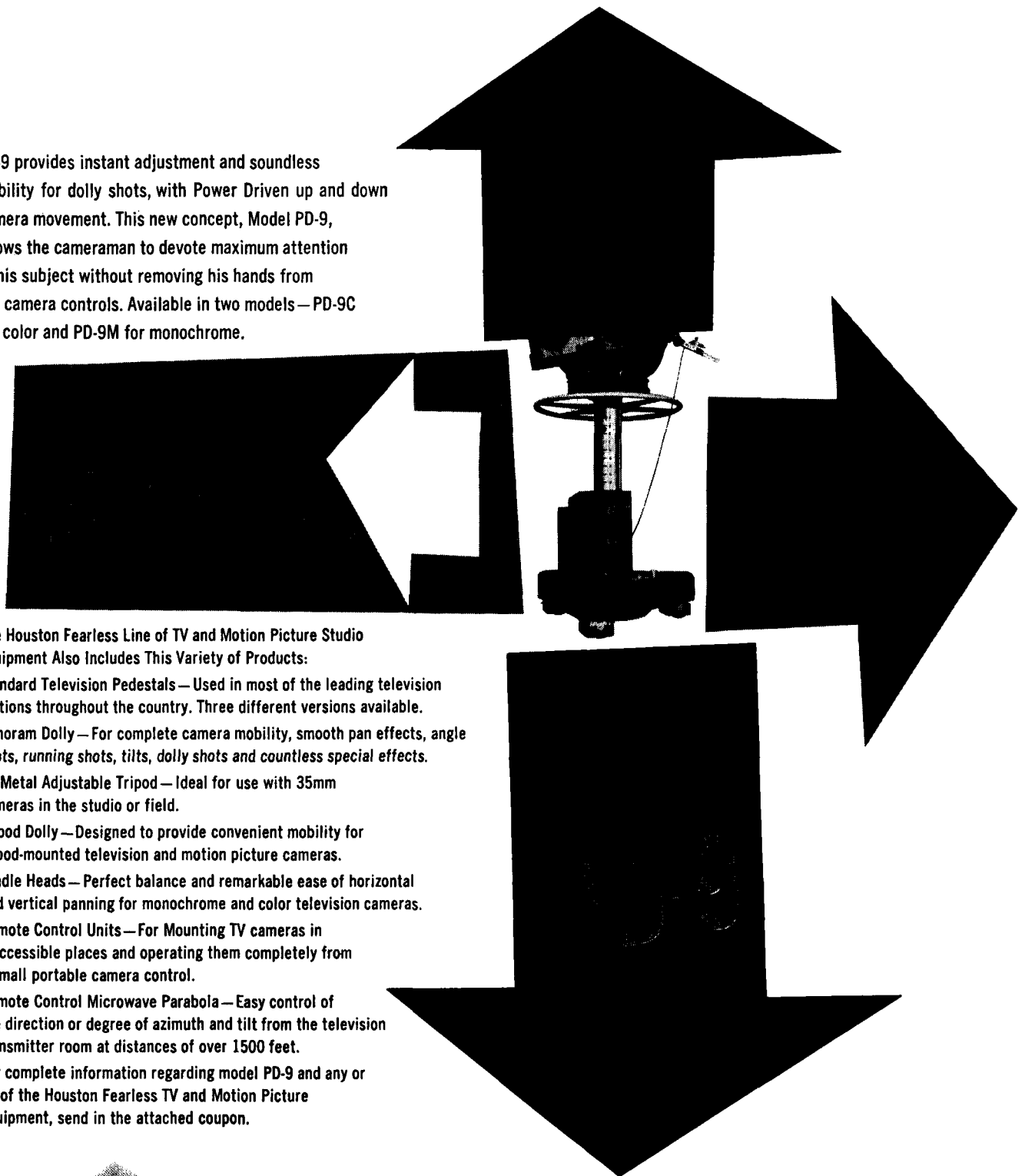
MOTION PICTURE LABORATORIES, INC.

1672 Union Ave., Memphis 4, Tenn., Phone BRoadway 5-2323

**MPL**

*The Master Craftsmanship Your Film Deserves*

PD-9 provides instant adjustment and soundless mobility for dolly shots, with Power Driven up and down camera movement. This new concept, Model PD-9, allows the cameraman to devote maximum attention to his subject without removing his hands from the camera controls. Available in two models—PD-9C for color and PD-9M for monochrome.



The Houston Fearless Line of TV and Motion Picture Studio Equipment Also Includes This Variety of Products:

**Standard Television Pedestals**—Used in most of the leading television stations throughout the country. Three different versions available.

**Panoram Dolly**—For complete camera mobility, smooth pan effects, angle shots, running shots, tilts, dolly shots and countless special effects.

**All-Metal Adjustable Tripod**—Ideal for use with 35mm cameras in the studio or field.

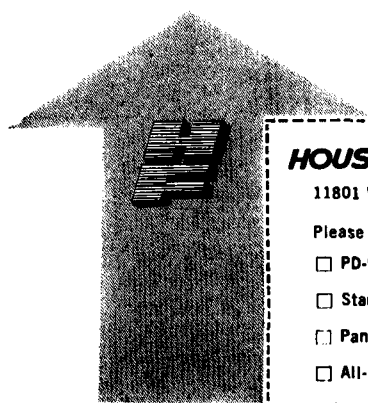
**Tripod Dolly**—Designed to provide convenient mobility for tripod-mounted television and motion picture cameras.

**Cradle Heads**—Perfect balance and remarkable ease of horizontal and vertical panning for monochrome and color television cameras.

**Remote Control Units**—For Mounting TV cameras in inaccessible places and operating them completely from a small portable camera control.

**Remote Control Microwave Parabola**—Easy control of the direction or degree of azimuth and tilt from the television transmitter room at distances of over 1500 feet.

For complete information regarding model PD-9 and any or all of the Houston Fearless TV and Motion Picture Equipment, send in the attached coupon.



**HOUSTON FEARLESS** Dept. 00

11801 W. Olympic Blvd Los Angeles 64, Calif.

Please send me complete information on:

- PD-9 TV Pedestal
- Standard Pedestals
- Panoram Dolly
- All-Metal Tripod
- Cradle Heads
- Remote Control Units
- Remote Control Microwave Parabola
- Tripod Dolly

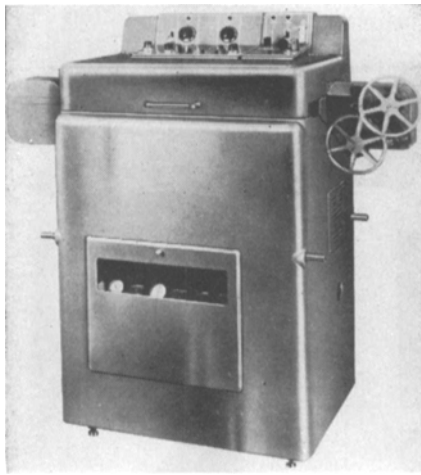
Name \_\_\_\_\_

Company \_\_\_\_\_

Position \_\_\_\_\_

Address \_\_\_\_\_

City \_\_\_\_\_ Zone \_\_\_\_\_ State \_\_\_\_\_



The PSC Applied Research Limited Type T246 Mark 3 Automatic Tri-Film Processor is a transportable equipment designed to process and dry automatically 16mm, 35mm and 70mm film. Four lengths of 16mm film or two 35mm lengths can be handled simultaneously, or one 70mm length. The film magazine holds four 400-ft 16mm films, two 400-ft 35mm films or one 400-ft 70mm film, spooled or on cores. Larger magazines are available.

Three basic speeds of 1½, 3 or 6 ft/min can be obtained or changed by a belt adjustment. Further control over processing results from a special programming assembly which can be adjusted to change the loop length in each individual processing

tank. No lower rollers are used, as the upper roller system of the equipment automatically forms loops of the correct length in each tank. Processing is controlled by a mechanical program unit after the film is loaded into the machine.

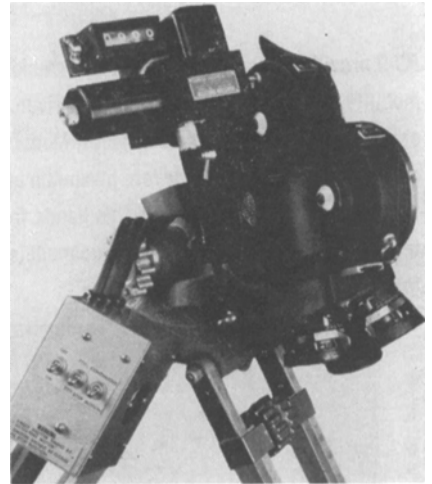
As normally supplied, the first two tanks are used for developing, the second pair for fixing and the last two for washing. Other combinations of tanks and processing solutions, as for stabilization, special hardening or combined development-fixation, may be obtained by changing Saran conductors on the liquid distribution system. Positive-drive pumps with heaters are fitted on two or more of the first four tanks, according to customer requirements. Separate temperature control of the processing solutions is possible on each tank over the range 60 to 110 F, within ±1 F. Temperature control is exercised in the diaphragm heater pumps.

The need for stop baths and interbath rinses is claimed to be virtually eliminated because of a positive squeegee roller design. High temperature chemical resistant plastics and type 316 stainless steel are used in all areas likely to be contaminated by chemicals.

The processor measures 54 in. long, 22 in. wide and 51 in. high, and weighs 400 lb. Power consumption is 5 kva maximum single-phase; 110 v, 45 amp, or according to customer requirements.

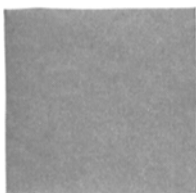
This equipment, which is manufactured by PSC Applied Research Ltd., 1500 O'Connor Drive, Toronto, Can., was the subject of a paper presented at the 81st

SMPTE Convention in Washington, D.C., which will appear in a forthcoming issue of the *Journal*.



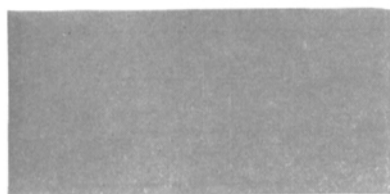
The CECO two-speed, stop motion motor has been announced by Camera Equipment Co., 315 W. 43 St., New York 36, as the smallest and most efficient designed for the Arriflex 16mm Camera and as the first American-made motor available to the camera industry. It provides either ½- or ¼-sec exposure by a knob adjustment. A built-in Veeder Counter is supplied — a one-to-one counter, each digit corresponding to an exposure.

## E d u c a t o r s . . .



- Make sure you get the most out of your 16mm sound films
- Use the standard tests your own projector repairman uses
- Measure your projector's performance yourself with the . . .

## 16mm SOUND-SERVICE TEST FILM



- Points up both projection and sound troubles
- Instruction booklet supplied with the film
- Test instruments are not required. Write . . .

**SOCIETY OF MOTION PICTURE AND TELEVISION ENGINEERS**  
55 West 42nd Street, New York 36, New York