

## SUPPLEMENT TO A DIRECTORY FOR MEMBERS

April, 1962, Journal, Part II

Since publication of the April issue, we have obtained the descriptions of Sustaining Members given below.

**De Frenes Company**, 1909-19 Buttonwood St., Philadelphia 30, Pa.

De Frenes is a complete motion-picture producer, equipped and staffed to handle any and all phases of film production. Since its founding in 1916, the company's experience in production has included films for industry, government, all five of America's armed forces, medical organizations, education centers, travel organizations and television.

The permanent staff of De Frenes is a highly skilled experienced group divided into these departments: Creative (scriptwriting and direction), Laboratory and Editing, Special Effects, Set Design and Construction, Shop and Maintenance, Camera Crews, Sound Recording, Technical and Cartoon Art and Animation. Facilities include one of the East's largest sound stages; 5 cutting rooms; 3 animation stands; optical, developing and printing equipment for 35/16mm, black/white and color film; modern viewing theater; humidity-controlled film storage vault; conference rooms and offices.

Mr. Joseph F. De Frenes, who has been active in moving pictures since 1906, produced the first color motion picture shown on Broadway, in 1911. His travelogue pictures, shot in the interior of Africa, in Asia and in Europe were famous in their day, and America's first sales-training film (for the National Cash Register Company) was made by De Frenes.

**Address inquiries to:** Joseph F. De Frenes, President, at the address above.

**Famous Players Canadian Corporation Ltd.**, 130 Bloor St. West, Toronto 5, Ont., Can.

The firm holds an interest in 287 regular theaters and 44 drive-in theaters. It also holds interests in the following: 50% interest in CFCM-TV (French) Quebec City and CKMI-TV (English) Quebec City; 50% in CKCO-TV Kitchener, Ontario, as well as a minority interest in CHAN-TV Vancouver, B.C., and an interest in numerous community antenna systems. The company also holds the Telemeter Pay-TV franchise for Canada and it has been operating a system with approximately 5,000 subscribers for the past two years in West Toronto. The exclusive license for Canada for the manufacture and sale of color television sets using Chromatron post-deflection-focusing cathode-ray tube is a company interest. Added to all these activities are interests in six bowling centers, the Airliner Motor Hotel and Town and Country Restaurant in Winnipeg, Manitoba.

**Address inquiries to:** E. E. Fitzgibbons, Executive Director of Television and Telemeter Dept., at the address above.

**McCurdy Radio Industries Limited**, 22 Front St. West, Toronto, Ont., Can.

The firm primarily manufactures commercial audio equipment for the radio broadcasting, television and motion-picture industry. In addition to a complete product line of components, Systems Engineering in the radio and television industry is emphasized. The firm builds complete stations into which are integrated its components, with emphasis on the "Packaged" concept — wherein assemblies are completely fabricated in the plant and moved to final destination in a completely pre-tested operating condition.

**Address inquiries to:** G. E. McCurdy, President, at the address above.

**D. B. Milliken Company**, 131 N. Fifth Ave., Arcadia, Calif.

The Milliken Company has pioneered the application of small-format motion-picture photography for space age research. Standard equipment on all Project Mercury sub-orbital and orbital flights is the Milliken Pulse Camera. The firm's cameras are also used on space-borne applications in the following research projects: Echo II Communications Balloon Satellite; Saturn Apollo Booster; Chrysler's Flying TV Station; Reconnaissance Satellite Development; and "Zero G" studies.

Milliken manufactures 16mm high-speed motion-picture instrumentation cameras for operation from 4 to 500 frames per second; these cameras employ an intermittent movement with register pin for studio-quality results. The company has facilities for design and manufacture of complete photographic systems, does research and development of special camera configurations for abusive environments, and provides a consulting service in the application of photography as an instrumentation tool.

**Address inquiries to:** T. H. Truesdell, Vice President; R. C. Kiteley, Field Engineer; or L. F. Meyer, Field Engineer at the address above.

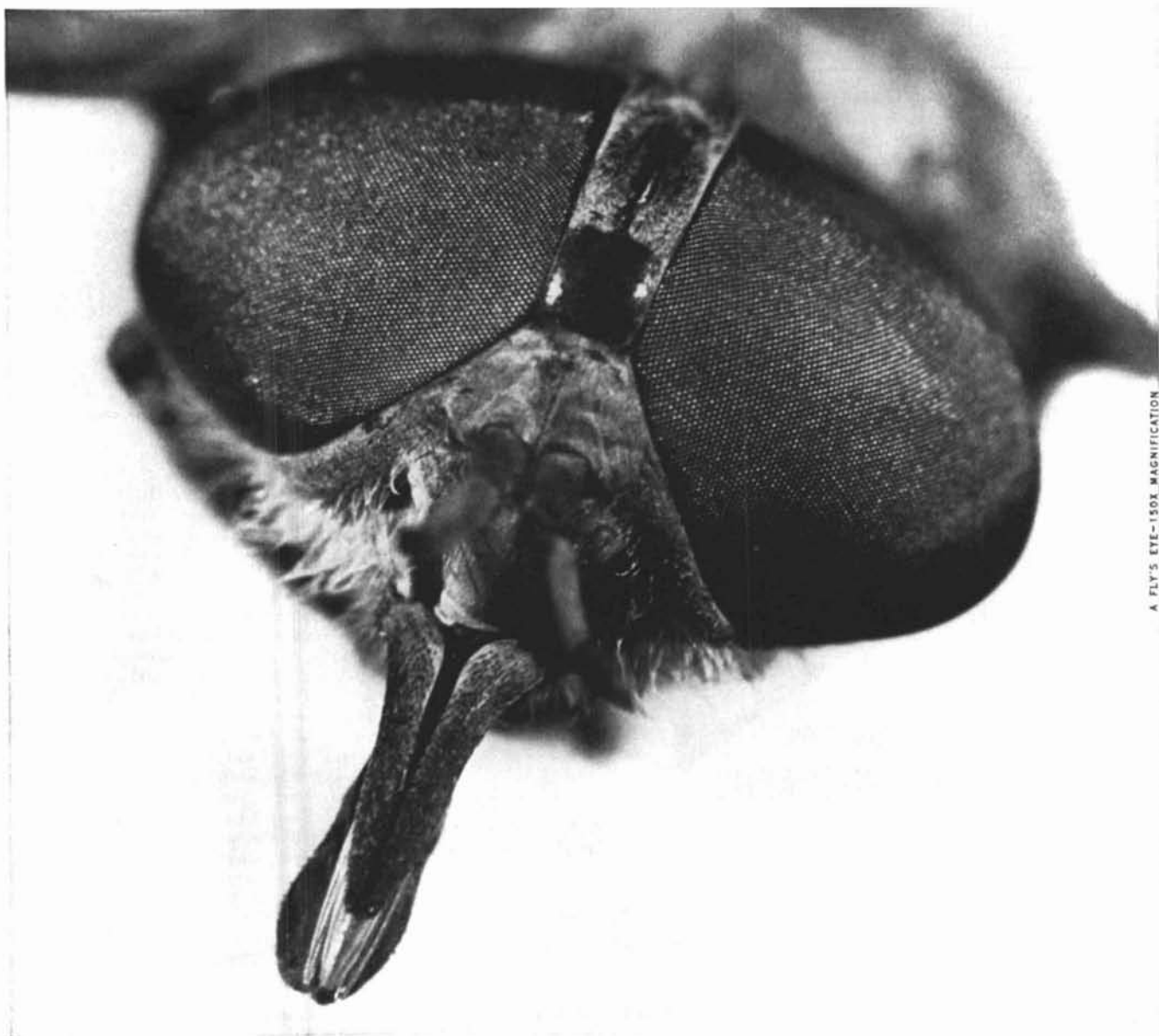
For the southeastern U.S. contact: C. G. Holzapfel, Field Engineer, P.O. Box 1089, Orlando, Fla.

**Trans-World Film Laboratories Ltd.**, 4824 Cote des Neiges Rd., Montreal, Que., Can.

The firm has been in the motion-picture processing business in Canada for ten years. Its services consist of all phases of film processing in 35mm black-and-white, 16mm black-and-white and 16mm color printing. TWF specializes in processing for professional producers in theatrical, newsreel, TV series, commercials and industrials, from original processing to volume release printing.

**Address inquiries to:** Findlay J. Quinn, Technical Lab Director, at the address above.

**Errata in the Listings of Members:** A number of errors and omissions have come to our attention. Publication of these is being withheld until later with the hope that all who know about insufficiencies or errors will write their advice so that one complete publication of Errata can be accomplished.



A FLY'S EYE—150X MAGNIFICATION

like to hire a new kind of private eye?



Looking for a new kind of eye? Impressed by the long distance vision of TIROS and NIMBUS? Those were ELGEET lens systems specifically engineered to prove that "pie-in-the-sky" could become actual "eye-in-the-sky" concepts. At ELGEET we have the optical know-how and the design imagination you may be seeking for your own project. We'll send our Design Section to meet with you in your office and take that optical problem off your desk. We feed it into experienced minds and high-speed computers to break-through to your possible solutions. Let ELGEET be your Private Eye. Take your choice of a deep look, a quick look, a dim look, a bright look, a wide look, a forward look, a top-side look or an underbelly look. But first: *write to ELGEET OPTICAL COMPANY, 838 Smith Street, Rochester 6, New York for a fully illustrated information file on our optical capabilities and performance.*

CREATIVE OPTICS \*  
**Elgeet** \*  
FOR EARTH AND SPACE