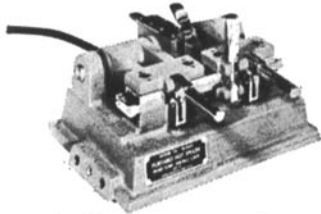


CAMERA·MART

presents the
finest in editing equipment
PORTABLE HOT SPLICER



- Cuts and splices in one operation.
- Professional model with hardened ground chrome steel cutter blades.
- Built-in carbide tipped scraper blade cuts splicing time in half.

Model 135—35mm or 16mm **\$339.00**

Model 116—16mm or 8mm **\$239.00**

RIVAS MYLAR SPLICER



Constructed to professional specifications for 16 or 35mm film. Registration pins align the film perfectly while the serrated cutter holds the tape firmly over the film during the splicing operation.

Rivas 16 or 35mm Straight **\$165.00**

Rivas 16 or 35mm Diagonal **\$175.00**

STANCO CINE SPLICER

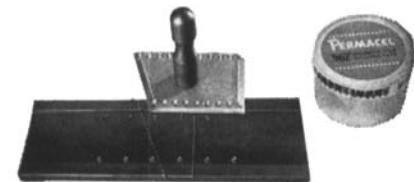


- Automatically removes emulsion.
- Dual Film Registration pins permit perfect film alignment.
- Correct platen temperature at splicing point permits faster stronger splices.
- Heavy duty precision construction throughout

8/16mm **\$239.50**

35mm **\$239.50**

16 or 35mm SPLICING BLOCK



Birns & Sawyer Splicing Block tool: d from one piece of solid bar stock. Anodized. Individually turned, accurately jig spaced brass pegs. Complete with Camart Serrator and one roll of Permacel 35mm x 66' splicing tap).

16mm **\$23.50**

35mm **\$28.50**

For descriptive literature write to:

the **CAMERA·MART** inc.

1845 Broadway, New York 23, N. Y.
PLaza 7-6977

new products

(and developments)

.....
Further information about these items can be obtained direct from the addresses given. As in the case of technical papers, the Society is not responsible for manufacturers' statements, and publication of these items does not constitute endorsement of the products or services.



Gamma I Printers, developed by Itek Corp., Lexington 73, Mass., are designed to eliminate automatically the distortions inherent in panoramic aerial photographs. The distortion may be caused by altitude, camera angle, vehicle speed or the inevitable change in scale that occurs when a panoramic or very wide angle lens photographs the ground below. In a panoramic photograph taken over the center of a city, for example, the blocks in the middle would look square, but would appear increasingly "squashed" toward the edges of the picture.

Four of these printers are being built under contract with the Air Force Systems Command, Research and Technical Div. at the Rome, N.Y. Air Development Center.

Slow-motion playback for observation and analysis of motion in detail is available as an optional feature with portable Ampex Videotape Recorders, according to a recent announcement. Ampex VR-1500 closed-circuit recorders and VR-660 broadcast models previously offered stop-motion playback permitting sustained viewing of a single frame. The new feature permits playback at any degree of speed from half-speed to full-stop motion with a single front panel control. It is available as an optional feature with new recorders and in kit form for recorders now in use. It is priced at \$340.

The Deluxe Editing Console, Model 220, combining splicer, viewer, motordrive rewinds and desk in one unit, has been announced by Prestoseal Manufacturing

Corp., 37-12 108 St., Corona, N.Y. Model 220 is available with any of the three basic types of Presto-Splacers — the Miracle, for butt-welding microfilms, motion-picture films, and magnetic films and tapes end-to-end; the Hercules, for bridging the butt-splice with a heat-sensitive nontacky ribbon of transparent material (especially useful for splicing Cronar or Kalvar Film and other non-compatible materials); and the Paper Tape Model for electrically fusing 5-channel and 8-channel paper tapes and Mylar magnetic tapes with a compressed overlap splice.

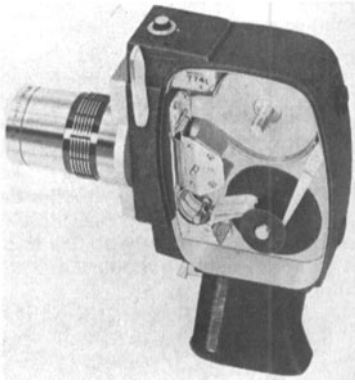
Switch selection on the control panel permits the use of a variable speed control for take-up and rewind, and a precision variable transformer controls speeds from 1 to 200 in./sec. Features include instantaneous braking with braking on the rewind to prevent damage to the ends. The price range is from \$1,600 to \$2,100. The machine is also available without splicers at a price range of \$1,000 to \$1,200.

A unidirectional boom microphone called the SM5 has been developed by Shure Brothers, Inc., 222 Hartrey Ave., Evanston, Ill., especially for motion pictures and television. Design features include a polar pattern that is cardioid, symmetrical about the axis and exceptionally uniform with frequency; a wide-range frequency response especially suitable for natural dialogue or vocal music pickup; an integral windscreen, effective in outdoor locations for fast boom swings; mechanical suspension system with a two-stage mechanical filter for any boom application; and absence of transformers or response correcting inductors making it possible to use the microphone in extreme hum fields. The SM5 is priced at \$225.

New products recently announced by Mole-Richardson Co., 937 N. Sycamore Ave., Hollywood, Calif. 90038, include a new Midget Solarspot, Type 2351; Molorama Super Quartz Cyc-Strip, Type 2641; and Molequartz Double Broad, Type 3221 (2000 w). The new Midget has a focusable beam with adjustable intensity and spot size. It weighs only 6½ lb on a 5½ in. base plate. The Cyc Strip uses 3200 K quartz iodine globes suitable for color TV and color motion pictures. It provides even light on vertical cycs when placed in an easily concealed position at floor level or can be hung overhead to light upper regions of extra tall cycs. The Type 3221 Double Broad provides soft, even light in a rectangular field. It uses 3200 K quartz-iodine globes in 500-w, 750-w or 1000-w sizes.

A new quartz-iodine light called Soft-Lite has been announced by ColorTran Industries, 630 Flower St., Burbank, Calif. The light, which operates directly from 120-v a-c or d-c, employs a new reflector design principle to direct the rays from the lamp so that light from every part of the reflector is of the same intensity. Because the light falling on the background or subject is essentially indirect light, shadows can be eliminated or can be created with controlled density without creating secondary shadows, the announcement stated. The lamps, made in three sizes, produce 3200 K, and the color temperature is maintained

through the use of a special reflector coating.



A device called the **Load-A-Matic**, designed to simplify the loading of 8mm movie cameras, has been introduced by Keystone Camera Co., Hallet Square, Boston, Mass. 02124. The device, completely contained in the camera, is now incorporated in four of the firm's newer cameras. The illustration shows the Load-A-Matic in the K-774L zoom camera. To load the new cameras the end of the film is placed against a retaining plate, the trigger is depressed and a pair of metal "fingers" automatically latch the film to the hub of the take-up reel.

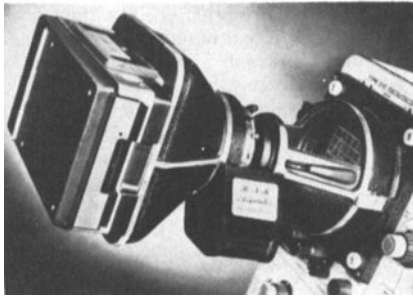
Keystone acquired the patent for the device from the principality of Liechtenstein where negotiations were carried on with Prince Henry, chief executive of the Carena Company, which owned worldwide patents. The system was originally designed for camera retailing in Europe at \$300 and up. Keystone engineered the development for automatic zoom cameras ranging in price from about \$113 to \$216.

The firm also recently introduced home movie projectors designed for "flicker-free" slow motion as well as normal speed, ranging in price from under \$140 to about \$210.

A **wideband oscilloscope** designated Type 546 has been announced by Tektronix, Inc., P.O. Box 500, Beaverton, Ore. 97005. Type 546 accepts the new Tektronix 1-A Series Plug-In Units for general purpose d-c to 50 Mc dual trace applications, and also the "letter series" plug-ins for strain gage, multichannel, differential and operational amplifier applications in the d-c to 30 Mc area. Dual-trace sensitivity with a Type 1A1 Plug-In Unit is to 50 mv/cm from d-c to 50 Mc and to 5 mv/cm from d-c to 28 Mc. For applications demanding even greater sensitivity, the two input channels can be cascaded to provide single-trace displays at approximately 500 μ v/cm sensitivity from 2 cps to 15 Mc. Price of Type 546 is \$1750.

New sample carriages and motor drives for the Photovolt Densicord 542 automatic recording densitometer have been announced by Photovolt Corp., 1115 Broadway, New York, N.Y. 10010. The accessories are designed to extend the use of the instrument to high-resolution scanning. Using the collimating slit aperture of 100 microns and one of the speed reduction drives (1:5, 1:4, and 1:2) exceptionally fine patterns can be resolved, the announcement stated. The new sample car-

riage is set up for convenient scanning of Microzone Cellulose Acetate strips and for Agar Gel Electrophoresis slides. It is well suited to scan ultracentrifuge films and other transparencies up to 2- by 3-in. size.

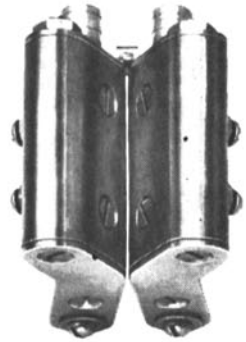


An **oscilloscope camera** called the Oscilloscribe has been introduced by B N K Associates, Saratoga, Calif. The camera is equipped with a 75mm focal length $f/1.9$ lens fitted with a heavy-duty shutter. Lens and shutter controls can be operated from the outside of the camera. A Polaroid Model 100B camera back uses the new flat film pack with emulsion rated at ASA 3000. The camera body consists of a rigid aluminum casting and is attached to the oscilloscope with a mounting bezel, hinged to allow the camera to swing away from the oscilloscope and to be put on and removed easily. A light seal between the oscilloscope and mounting bezel is designed to prevent any light leakage at this point. The camera has been designed especially for medical use, production testing, or other situations which require wide angle, across-the-bench, unobstructed visual access to the oscilloscope face while manipulations or adjustments are made on the subject under test. The camera, including the mounting bezel, is priced at \$395.

An **electrical-in, electrical-out electronic storage tube** developed for use in equipment requiring minimum size, weight and power has been announced by the Westinghouse Electronic Tube Division, Elmira, N.Y. The electrostatic tube, called the Recorderchon type WX-5320, has a resolution of 450 lines with standard television frame rate and raster. The tube is said to store seven shades of gray and to maintain original resolution for hours before reading out. It can be supplied with different ranges of readout copies so that, depending on specific system requirements, from one to 600 readouts are possible. The tube is said to perform well in scan conversion, electronic delay-line, and data storage applications and can be operated with modified electrostatic vidicon circuitry. It is 6 in. long and 1 in. in diameter. Maximum voltage required is 375 v and a 6.3 150-ma heater can be supplied to reduce further the overall power required.

An **ultrasonic system for pinpointing** the precise location of leaks in underground pressurized communications cable has been introduced by Delcon Corp., 943 Industrial Ave., Palo Alto, Calif. Heart of the underground probe system, announced as a "first," is a sealed stainless-steel tube 13 in. long and $\frac{1}{8}$ in. in diameter. Called a duct-probe, the watertight device contains solid

SQUEEZE



THE
LAST
TRACE

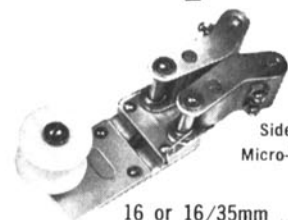


OF MOISTURE
OUT OF EVERY INCH OF FILM

- "Venturi" design allows extra-critical gap adjustments to be made even while squeegee is in use.
- Precision ground orifice with adjustment locks.
- Torsion spring lobe control for easy passing of splices.
- Positive centering device for lobes.
- Lobes can be removed for cleaning and accurately reset to prior position.
- Photographic grade 18-8 stainless steel construction.
- Universal mounting bracket.

FILMLINE

Micro-Squeegee*



Side View of
Micro-Squeegee

16 or 16/35mm \$150

*Pat. Pending 70mm \$175

Filmline
CORPORATION
ERNA STREET, MILFORD, CONNECTICUT

Micro-Squeegee — The World's Finest
Squeegee Device — Naturally, from Filmline

THE LAB FOR REVERSAL FILM

16MM

BLACK & WHITE
REVERSAL
PRINTING
&
PROCESSING

COLOR PRINTING

OTHER SERVICES

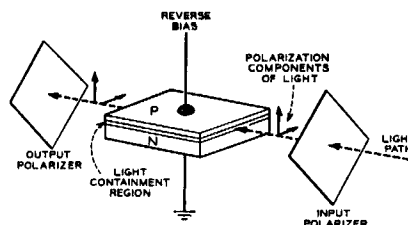
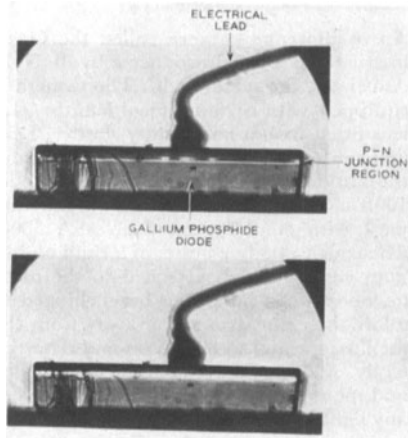
- Work Prints
- Color-to-Color Prints
- Color-to B & W Prints
- Raw Stock
- Fastax Service
- A & B Roll Prints
- Fades-Dissolves
- Timed Prints
- Edge Numbering

FOR COMPLETE INFORMATION WRITE

LAB-TV

723 Seventh Ave., New York 19, N.Y. • JU 6-2293

state electronics sensitive to ultrasonic energy in the 36,000 to 44,000 cycle/sec range, as well as miniaturized preamplification circuitry. The transducer is said to detect ultrasonic energy created by air molecules under normal 5- to 10-psi pressure escaping from a cable leak as small as 0.0025 in. in diameter. The duct-probe system, used in conjunction with the firm's Delcon Ultrasonic Translator detectors used in maintenance of aerial pressurized communications cable, the new duct-probe system is designed as a self-contained, leak locator requiring only one operator. Price range of the detectors is from \$525 to \$850. Cost of the duct probe system is announced as less than \$1,250.



A new way to modulate light waves by applying a varying reverse bias to gallium phosphide diodes as the light travels along the plane of the diode p-n junction has been developed at Bell Telephone Laboratories. With a reverse bias applied to the diode, an incoming light wave is polarized and focused on the diode p-n junction region. The two polarization components of the light wave then travel at different velocities along the plane of the p-n junction and emerge from the junction out of phase with each other. The change in velocity imparts a phase modulation to each polarization component of light. To achieve amplitude modulation, the phase-modulated components of light are passed through an output polarizer.

In recent studies, 31 v were applied to a gallium phosphide diode and phase differences were measured up to 140° for green light of 5460 Å. This means that up to 88% of the light intensity entering the diode can be amplitude-modulated. The length of the diode, which is also the length of the light path, is about 0.025 in. The phase modulation in gallium phosphide diodes is believed to arise from a phenomenon known as the linear electrooptic effect (Pockels effect). This effect alters the index of refraction of piezoelectric crystals when a strong electric

field is applied to them. In the case of gallium phosphide diodes, the effect takes place in the p-n junction region when reverse bias is applied.

A broadcast television tape designated the 144 series has been introduced by Ampex Corp., 401 Broadway, Redwood City, Calif. The new tape, which features a special coating process called Ampex Ferro-Sheen, is said to have superior signal-to-noise characteristics, to provide cleaner operation than previously available tapes, and to be especially suitable for color recording.



.....
These notices are published for the service of the membership and the field. They are inserted three months, at no charge to the member. The Society's address cannot be used for replies.

Positions Wanted

Motion-Picture Production Associate. Five yrs experience 16mm educational film area. Capable of handling all phases of production including printing and processing. Extensive photographic still background in commercial areas. BA from Univ. of Southern Calif. and partial graduate requirements for MA in Radio and Television. Presently with a small film unit at university. Am looking for employer who needs creativity combined with technical competence. Married. Age 30. Resume and references on request from John A. Werner, 1844 S. 43rd St., Lincoln, Nebr., 68506. (402) 488-5191.

Photographic Technician. 13 yrs experience all phases of photography, 4 yrs kinescope recording experience, all phases, experienced in closed circuit TV and some broadcast. Maintained and operated 1000B Ampex Recorder last six months WTTW Chicago. Retired from USAF 20 yrs, willing to resettle. Resume may be obtained by writing Hollis J. Hennigar, Box 95, Balbo Trailer Club, La Grange, Ill.

Motion-Picture Producer. U.S.-trained film producer operating in India invites offers from educational film producers in the U.S. to shoot films according to the latter's specifications. With the most modern equipment fixed on a jeep, this resourceful and on-the-go producer can willingly accept assignments from TV companies too. Please contact Syed R. Hasan, 6-Star Mansion-A, Christ Church Road, Byculla, Bombay-8, India.

Editing/Production Assistant. Solid background of courses in film production, editing, photography. Plusses: B.A. degree, extensive foreign residence, fluent French. Currently P.R. assistant/secretary in leading scientific research center. Will work hard—learn fast—make a contribution to your organization. P.O. Box 435, Lenox Hill Station, New York, N.Y. 10021.