

Membership Directory

A complete Directory for members will be issued later this year, with the Geographic List of Members again included. This is in accord with determinations by the Society's Board of Governors that some time after mid-year, a Directory be issued with the Alphabetic List of Individual Members with addresses including Zip Code Numbers and that the Geographic List be presented by Sections for those in the United States and Canada and those in the other countries be listed by world areas and countries. The goal is to publish the Directory as Part 2 of the July *Journal*.

Members are, therefore, requested to send at once any advice about corrections required in the address of the label on their current *Journal*. Also, advice about changes in employment should be sent. The deadline for these to go to the printer is the second week of May.

Sustaining Members are being canvassed to provide the full information about them comparable to that published in the July 1967 *Journal*, Part 2.

Movie-Drome, an experimental motion-picture theater, the creation of Stanley

VanDerBeek, is being constructed at Stony Point, N.Y. When completed, the Movie-Drome will consist of a spherical dome on which thousands of images will be simultaneously projected. Instead of conventional seating arrangements there will space at the outer edges of the dome for the audience to lie on. Their feet will extend toward the center so that the complete field of vision will be taken up by the dome screen. Mr. VanDerBeek has produced many award-winning films. He was one of the three judges at the Maryland Film Festival held in March at the American Institute College of Art. The other two judges were James Card, Curator Motion Pictures of George Eastman House, Rochester, N.Y., and Martin Dworkin, a noted film critic.

Large-screen closed-circuit display systems for air traffic control have been installed at John F. Kennedy Airport, New York, by TNT Communications, Inc., 575 Madison Ave., New York, N.Y. 10022, for the Federal Aviation Administration. The new control system will use two projection screens, each 9 by 12 ft, to display visual information used by controllers handling traffic in and out of New York airports. In the past, controllers used small individual console displays and worked in widely separated installations. The new display system will show composite information combining radar, computer alpha-numeric and video mapping for more accurate traffic control.

The system includes four Eidophor projections systems operating at 945 scanning

lines, remote controls, specially fabricated mirror assemblies and related equipment. A system of five mirrors is used so that the display on each screen can be projected interchangeably from any one of the Eidophors.

An International Conference on Electrophotography will be held September 4-6 at the University of Rochester, Rochester, N.Y. 14627. The conference is sponsored by the University's Institute of Optics. Session chairmen are Albert Rose, Photographic Materials; R. M. Schaffert, Electrophotographic Processes; Carl Claus, New Electrophotographic Processes; and John Urbach, Image Evaluation. General Papers Chairman is Joseph M. Gaynor.

The EMC Directory of Summer Session Courses on Educational Media, 5th ed., has been announced by Educational Media Council, 1346 Connecticut Ave., N.W., Washington, D.C. 20036. The 1968 Directory lists about twice as many colleges and universities offering courses in the newer media than did the first Directory. The Directory consists of a series of coded regional charts showing colleges and universities in the United States offering summer session courses on production and practice of educational radio and television, motion pictures, still photography, graphics, programmed instruction, computers and related courses, including media theory, utilization and administration. Both graduate and undergraduate courses are listed.

A Contemporary Instrument, a paper by Frank Lewin appears in the January 1968 issue of *Music Journal*, a publication of Demeter Music, Inc., 128 E. 41 St., New York, N.Y. 10017. Mr. Lewin makes the point that the recording medium does more than reproduce a "live" performance, that it is (by implication) as much an expression of the zeitgeist of our time as compositions for harpsichord and lute were for an earlier age. He points out that "much of the music composed today is performed for an audience that never sees the performers." In conclusion he states that: "Our much maligned technology can be quite effectively utilized for artistic as well as mechanical ends: a contemporary tool for contemporary forms of expression." The brief article is so packed with ideas and information that it would suffer from any attempt to extract significant quotations. It may be summed up by stating that in the best sense of the term, Mr. Lewin is "with it."

Cinéaste, a new quarterly of special interest for film students in colleges and universities is published by Cinéaste Magazine, 27 W. 11 St., New York, N.Y. 10011. The Editor is Gary Crowdus. Associate Editors are Donald G. Jackson and Paul Glushanok. A sampling of the articles appearing in the Winter 1967-68 issue includes "Film Study and History Research at the University of Iowa," by Raymond Fielding; "Made in USA—The Cliche of French Anti-Americanism," by Richard D. Carreno; "On Andy Warhol," by Andrew M. Lugg (part 1 of a two-part paper); "The Short Film," by Nicholas J. Zeoli and other articles, film reviews, columns and miscellaneous items.

FILM PRODUCERS • SPEAKERS • TV STATIONS

...A Limited Quantity of Tel Executives!

Teleprompter at \$189.50

MANUFACTURED BY THE UNDERWOOD CORP.

PREVIOUSLY SOLD at \$495.00

• The Tel-Executive is controlled by means of a sensitive, palm-sized hand control. The paper on which the speech is prepared moves across the face of the Tel-Executive at precisely the speed you wish. You can speed it up. You can slow it down. You can stop it altogether if you want to "od-lib," and then start it up again. It even rewinds rapidly. If you like, you can set the control at a fixed, comfortable speed. Tel-Executive is versatile — a marvelous assist to you — yet unobtrusive to your audience.

SALES TRAINING CONVENTIONS STUDIOS

THIS IS AN UNUSUAL OPPORTUNITY TO PURCHASE A PROMPTER AT A GREATLY REDUCED PRICE. THIS OFFER IS GOOD ONLY WHILE OUR SUPPLY LASTS.

M P E MOTION PICTURE ENTERPRISES, INC. M P E
TARRYTOWN, NEW YORK 10591
New York City Warehouse Phone: 212-245-0969



**ONCE THE CELEBRATION,
ALWAYS THE MEMORY**

GAF Professional Photo Products let you
burn the candle as often as you wish.



BRIEFS

WE'VE WRITTEN THE BOOK ON DUPLICATING COLOR TRANSPARENCIES & MOVIES

Our new photographic bulletin on Anscochrome® Duplicating Film Type 5470 goes beyond listing the outstanding characteristics of this low-contrast 35mm reversal color film.

We felt it would help you produce better duplicates if we gave you explicit information. So we put in a section on how to establish correct exposure for a transparency-duplicating system. And a section on correcting the color balance of the duplicate. We added a list of desirable features to look for in a slide duplicator. And even described several different types of color slide duplicators available from various manufacturers.

Of course, we included the usual details about processing, viewing, availability and storage. And wound up with an informative, 14-page brochure that's yours for the asking—Tech. Bulletin 7519-057.



UP WITH TRANSFLO CHEMISTRY... DOWN WITH COSTS!

GAF technical advances in formulation have resulted in considerable improvement in the chemistry for Transflo® Black-and-White Film and Print Processors.

Developer life has been extended and now requires less frequent solution changes. Films processed in the new developer produce negatives with improved shadow detail, upgrading negative quality.

The fixer has also been changed. We now recommend the new Shurfix® Type II Fixer which we've made non-

corrosive to eliminate equipment maintenance problems. It can also be used for hand processing.

And there's new packaging, too; concentrated developer and fixer both now come in 5-gallon Cubitainers.

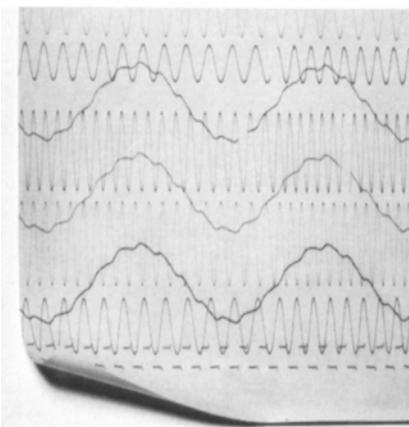
And all this improved Transflo chemistry is now available to you at a much lower cost than before.

Write for Bulletin PTB-7519-196.



RED/BLUE/PURPLE OSCILLOGRAPH PAPER GETS GREEN LIGHT

When aircraft manufacturers give the green light to a new product, saving money is an important consideration.



And that's exactly what they've been doing with Colortrace®—the oscillograph recording paper that gives 3 distinct color traces (which can be increased to 6 by varying filter density). Aircraft manufacturers report that Colortrace results in considerable cost savings since information retrieval becomes much easier and much faster than with conventional paper. Those who started using Colortrace on only a few selected projects said they're now going to use it routinely.

Colortrace can be processed in conventional processing equipment with the Colortrace Liquid Processing Outfit. For full information, see your GAF Representative or send for Technical Bulletin 7519-014.



JOIN THE JET SET

If you're looking to turn out large quantities of quality enlargements, and turn them out fast, look into the credentials of Jet® Enlarging Paper.

Jet is a high-speed, cold-tone projection paper of high quality. You'll really



be able to increase production because of the short exposure time made possible by its high speed.

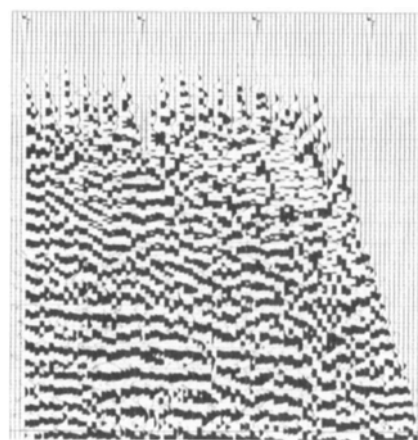
You'll like the crisp reproduction prints you get: brilliant whites, rich blacks and a long tone scale. And you'll certainly appreciate the extended processing latitude of Jet paper that helps to minimize the need for remakes due to exposure errors. (For optimum quality, we recommend the use of fast-working GAF Vividol® Developer.)

The Jet facts are in Bulletin 7519-069.



SHOCKING INNOVATION

Seismatrace® is a brand new member of the GAF family of photo-recording papers...for use in seismographic recorders. It was specifically designed to meet the needs of oil explorers and of geophysicists concerned with earthquakes and underground explosions of nuclear devices.



A moderate-speed recording paper, Seismatrace produces clean, legible records with exceptionally black traces on a brilliant white background. Its surface accepts marking devices used to make notations on the record.

more fine products  from General Aniline & Film Corporation
140 West 51 Street, New York, New York 10030

