

## NEW MOTION PICTURE APPARATUS

*During the Conventions of the Society, symposiums on new motion picture apparatus are held, in which various manufacturers of equipment describe and demonstrate their new products and developments. Some of this equipment is described in the following pages; the remainder will be published in subsequent issues of the Journal.*

### THE SUPER SIMPLEX PEDESTAL\*

J. FRANK, JR.\*\*

During the nine years since the introduction of sound reproducing equipment, the motion picture industry has witnessed the development of more heavily constructed devices, often of considerable weight, such as modern sound reproducers with directly connected motors in front, heavy-duty arc lamps, more sturdily designed projector mechanisms, and larger magazines. The weight of all this apparatus is far in excess of that for which the earlier pedestals and stands supporting all these units were designed. More recently the introduction of the standard 2000-ft. release print has placed a further burden of weight upon motion picture projection and sound reproducing equipment. To meet these demands, the International Projector Corporation has placed upon the market a new supporting pedestal.

The new Super Simplex pedestal is extremely symmetrical, harmonious in design, and provides an excellent balance for the heavy-duty equipment it must support. It has also been designed to permit all the necessary quick adjustments greatly desired and appreciated by projectionists.

Previous pedestals were designed for the old type silent projection equipment using slide-over attachments for the projection of stereopticon slides. This made the pedestal somewhat flimsy; but nevertheless it adequately supported the equipment that was mounted upon it. Modern equipment mounted upon such a pedestal is not properly balanced due to the location of the pivot point. Furthermore, the great weight of the equipment places a burden upon the old pedestals that almost reaches the danger point. The new Super Simplex pedestal adequately meets the requirements. The pivot point has been moved back under the lamp house table, resulting in excellent balance, and requiring only the slightest exertion to raise, lower, or horizontally adjust the entire apparatus, so that at an instant's notice it may be accommodated to the screen position.

Two convenient adjustments are provided, one for tilting, and the other for

---

\* Presented at the Spring, 1937, Meeting at Hollywood, Calif.; received April 1, 1937.

\*\* International Projector Corp., New York, N. Y.

lateral displacement. The former adjustment has a unique feature eliminating the necessity for a long lead-screw. Three positions for the horizontal rod suspension have been provided. This permits the use of a short lead-screw for tilting. With the rod in the top position the pedestal is locked into position at the maximum angle of tilt by the control. Then the thumb-screw on the horizontal rod is loosened and the rod easily removed. The lead-screw is then adjusted so that the horizontal rod may be properly placed in the center position. The pedestal may then be further tilted. By repeating this operation and placing the horizontal rod in the lower position, angles of tilt from minus 3 to plus 33 may be easily

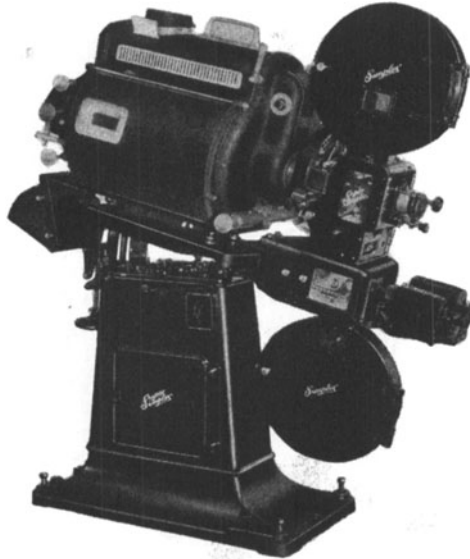


FIG. 1. Super Simplex pedestal and RCA Photophone rotary stabilizer sound head (operating side).

accomplished. The lateral adjustment, accessible from either side of the pedestal, permits a horizontal angle of approximately  $3\frac{1}{2}$  degrees about the pivot point located in the rear of the pedestal. Four knobs are turned to lock the pedestal in its horizontal position. When the pedestal is installed and the adjustments finally locked in place, the entire assembly is rigidly mounted, and the absence of vibration, due to the great weight of the whole unit, gives a steadiness to the entire equipment heretofore unobtainable.

The pedestal is provided with a spacious internal compartment into which may be brought all electrical connections, thus eliminating the network of wires and cables distributed around the projector in an unsightly manner. Where it is not convenient to bring up the conduits through the floor in the proper position, they may be brought into the compartment through a plate especially provided in the

non-operating side. If this is not necessary, this plate provides a suitable location for a fuse-box, if desired.

Two flush twist-lock receptacles are located on the non-operating side, one a three-pole for the change-over device, and the other a two-pole for the operating motor. This allows for readily disconnecting either of these important circuits without the necessity of breaking soldered joints, when the occasion arises for making a quick change of equipment.

Two 3-way, 30-ampere switches, one on either side of the pedestal, are mounted upon the pedestal for the operating motor circuit, so that the motor may

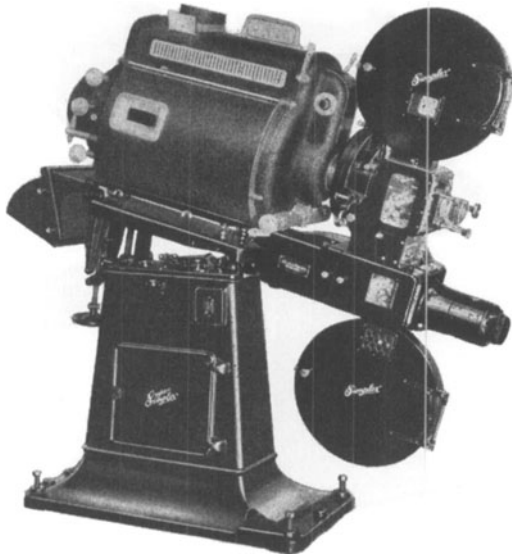


FIG. 2. Super Simplex pedestal and ERPI heavy-duty Mirrophonic reproducer (operating side).

be readily controlled from either side of the equipment. A further improvement is provided through a number of double-pole standard outlet receptacles into which may be plugged soldering iron, work light, threading lamp, or other auxiliary equipment. The arc lamp feed-motor also may be connected to one of these to provide an instant means of disconnecting this unit when necessary.

A universal type spirit level forms part of the unit, so that the equipment may be accurately levelled in the projection room when installation is made. The base of the pedestal is provided with levelling bolts fitted into solid steel cupped flanges, so that the stand may be levelled at all corners and still give excellent rigidity regardless of the unevenness of the surface upon which it stands.

The lamp house support bracket is of entirely new and unique design. It is of much more ample dimensions than any heretofore constructed, so that its length

adequately supports the much longer lamp house structure than was possible on any pedestal previously designed. For the first time it is possible with this unit to align accurately any type of standard lamp house regardless of slight errors that may exist in manufacture, so that the positive carbon axis is in accurate alignment through the optical system. The bracket may be tilted upward or downward at either end, from side to side, and raised or lowered vertically as a complete unit. This is accomplished by providing holes for the mounting screws twice as large as the screws, permitting displacement in all directions. A screw at the rear posi-

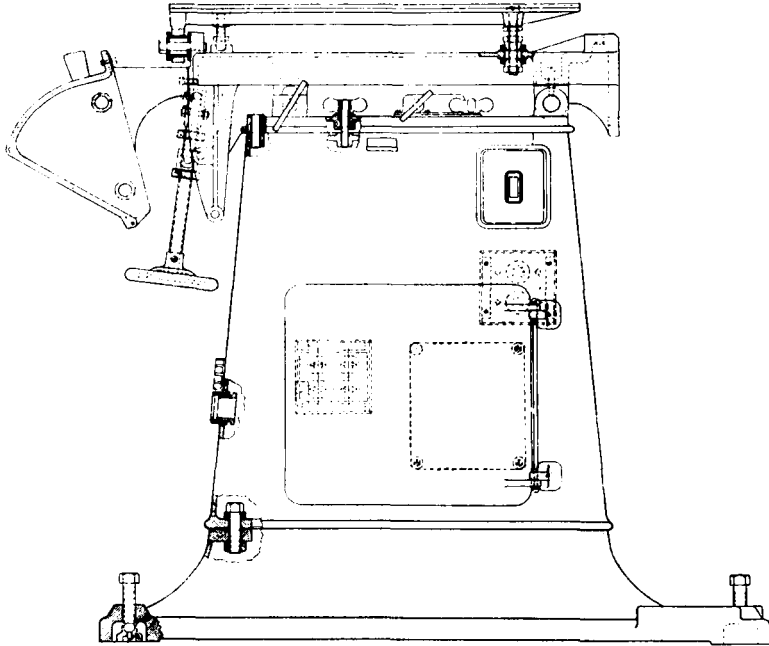


FIG. 3. Diagram of pedestal, showing adjustments.

tively controls the vertical adjustment at the rear. Large washers and nuts permit positive fastening of the screws in any desired positions in the large holes. Absolute rigidity is obtained by tightening the four nuts involved.

When lamps of the low-intensity or high-intensity Suprex arc type are used, a 100-ampere, double-pole knife-switch is provided, mounted in a heavy cast-iron switch-box attached to the pedestal. Where straight high-intensity arc equipment is used a heavy switch-supporting bracket attached to and supported by the rear lower pedestal section is furnished, and it is recommended that a heavy-duty, 200-ampere switch and switch-box such as the "Square D" be used. The heavy-duty switch-supporting bracket is sold at a slight additional cost. Three holes

with insulators are located in the rear of the pedestal through which the asbestos wires for the arc lamp supply may be run.

A flat surface is located on the front operating corner of the pedestal, to which a standard change-over may be attached.

Since the sound reproducers of various manufacturers are not standardized in design, it is not possible with a pedestal of unit design to conform to all existing projection port-hole constructions because the relative position of the mechanism to the pivot point varies as much as 8 inches, depending upon the sound reproducer employed. Spacers, therefore, are furnished in 1-, 2-, 3-, 4-, 6-, and 8-inch sizes to fit between the lower and upper pedestal sections to fit the existing port-hole location.

For the same reason a number of different sound reproducer support-arms are available. The proper support-arm for the sound reproducer to be installed is furnished as part of the pedestal. With some types of sound reproducers it is necessary, for angles greater than 20 degrees, to provide a special support-arm to avoid interference between the pedestal front and the rear of the lower magazine.

The new Super Simplex pedestal will accommodate the Simplex sound projector, Type SA, in which case the lamp house bracket is eliminated. The 100-ampere arc lamp switch is furnished for this equipment.