

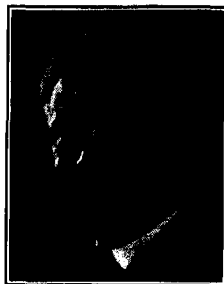
OFFICERS AND GOVERNORS OF THE SOCIETY  
1938



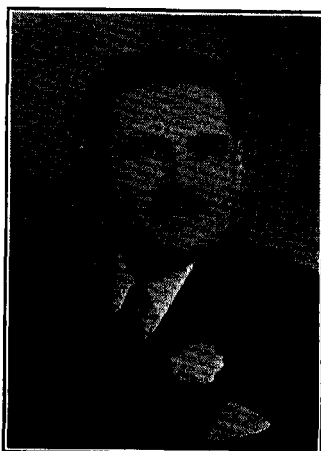
L. A. JONES  
*Engineering Vice-President*



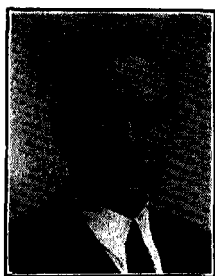
K. F. MORGAN  
*Executive Vice-President*



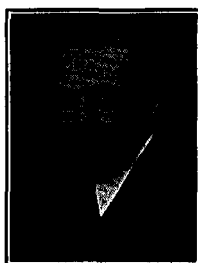
J. I. CRABTREE  
*Editorial Vice-President*



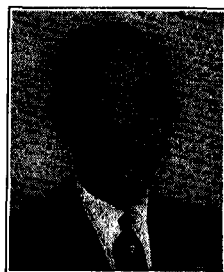
S. K. WOLF  
*President*



E. A. WILLIFORD  
*Financial Vice-President*



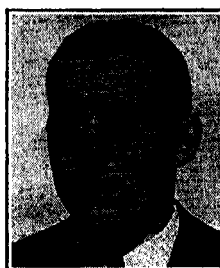
H. G. TASKER  
*Past-President*



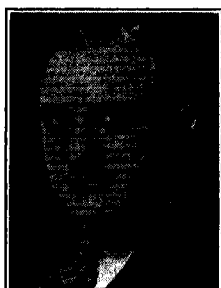
W. C. KUNZMANN  
*Convention Vice-President*



J. FRANK, JR.  
*Secretary*



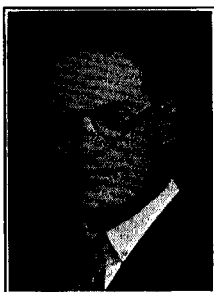
L. W. DAVEE  
*Treasurer*



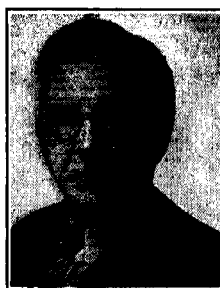
A. N. GOLDSMITH  
*Governor*



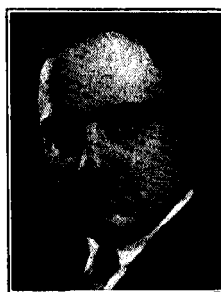
M. C. BATSEL  
*Governor*



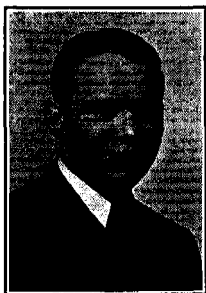
A. C. HARDY  
*Governor*



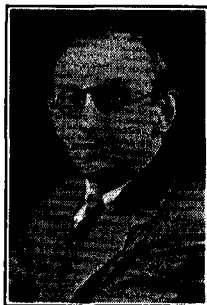
H. GRIFFIN  
*Governor*



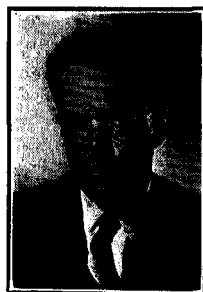
R. E. FARNHAM  
*Governor*



G. FRIEDL, JR.  
*Chairman, Atlantic  
Coast Section*



S. A. LUKES  
*Chairman, Mid-West  
Section*



J. O. AALBERG  
*Chairman, Pacific  
Coast Section*

#### SECTIONS OF THE SOCIETY

##### *(Atlantic Coast)*

\*G. FRIEDL, JR., *Chairman*

L. W. DAVEE, *Past-Chairman*

\*H. GRIFFIN, *Manager*

\*D. E. HYNDMAN, *Sec.-Treas.*

\*\*P. J. LARSEN, *Manager*

##### *(Mid-West)*

\*S. A. LUKES, *Chairman*

C. H. STONE, *Past-Chairman*

\*B. E. STECHBART, *Manager*

\*A. SHAPIRO, *Sec.-Treas.*

\*\*G. W. BAKER, *Manager*

##### *(Pacific Coast)*

\*J. O. AALBERG, *Chairman*

K. F. MORGAN, *Past-Chairman*

\*H. W. MOYSE, *Manager*

\*G. A. CHAMBERS, *Sec.-Treas.*

\*\*C. W. HANDLEY, *Manager*

\* Term expires December 31, 1938.

\*\* Term expires December 31, 1939.