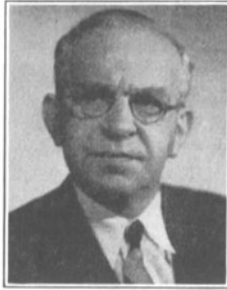


OFFICERS AND GOVERNORS OF THE SOCIETY
1940



D. E. HYNDMAN
Engineering Vice-President



N. LEVINSON
Executive Vice-President



J. I. CRABTREE
Editorial Vice-President



E. A. WILLIFORD
President



A. S. DICKINSON
Financial Vice-President



S. K. WOLF
Past-President



W. C. KUNZMANN
Convention Vice-President



J. FRANK, JR.
Secretary



R. O. STROCK
Treasurer



M. C. BATSEL
Governor



A. N. GOLDSMITH
Governor



H. GRIFFIN
Governor



H. G. TASKER
Governor



A. C. HARDY
Governor



J. A. DUBRAY
*Chairman, Mid-West
Section*



P. J. LARSEN
*Chairman, Atlantic
Coast Section*



L. L. RYDER
*Chairman, Pacific
Coast Section*

SECTIONS OF THE SOCIETY

(Atlantic Coast)

*P. J. LARSEN, *Chairman*

D. E. HYNDMAN, *Past-Chairman*

**R. O. STROCK, *Manager*

*J. A. MAURER, *Sec.-Treas.*

*H. GRIFFIN, *Manager*

(Pacific Coast)

*L. L. RYDER, *Chairman*

J. O. AALBERG, *Past-Chairman*

**P. MOLE, *Manager*

*A. M. GUNDELFINGER, *Sec.-Treas.*

*K. F. MORGAN, *Manager*

*W. C. MILLER, *Manager*

**H. W. MOYSE, *Manager*

*J. DURST, *Manager*

**H. REMERSHEID, *Manager*

(Mid-West)

*J. A. DUBRAY, *Chairman*

S. A. LUKES, *Past-Chairman*

*O. B. DEPUE, *Manager*

*I. JACOBSEN, *Sec.-Treas.*

**C. H. STONE, *Manager*

* Term expires December 31, 1940.

** Term expires December 31, 1941.