

REPORT OF THE SMPE STANDARDS COMMITTEE

Summary.—Proposals of specifications for (1) 35-mm and 16-mm raw-stock cores, (2) for screen brightness, (3) for rescinding the lantern-slide specifications previously included among the SMPE Recommended Practices, and (4) specifications for cutting and perforating 35-mm positive raw-stock and negative raw-stock have received initial approval of the SMPE Standards Committee in meeting and final approval by letter-ballot of the entire Standards Committee membership. The specifications were approved by the Board of Governors on January 24, 1941, and therefore are now Recommended Practices of the SMPE. This approval by the Board of Governors is in accord with the new standardization procedure for the Standards Committee also adopted by the Board on the same date.

35-Mm and 16-Mm Raw-Stock Cores.—In the Report of the Standards Committee published in the January, 1940, issue of the JOURNAL were included proposed specifications for 16-mm raw-stock cores, after approval by letter-ballot of the SMPE Standards Committee. Similar approval by letter-ballot has since been obtained on the specifications for 35-mm raw-stock cores. For convenience of reference, the two sets of specifications are reproduced on the following two pages.

Screen Brightness.—The previous SMPE Recommended Practice for screen brightness, published in the March, 1938, issue of the JOURNAL indicated 7 to 14 ft-lamberts at the center of the screen, when the projector was running with no film in the gate. The recently approved specifications, contained on a following page, changes this range of brightness to $10 \pm \frac{1}{4}$ ft-lamberts.

Lantern-Slides.—The previous specifications for the mat opening of lantern-slides were given in the March, 1938, issue of the JOURNAL on p. 255. Letter-ballot of the Standards Committee has recently given final approval to rescinding these specifications and to omit entirely from the SMPE Recommended Practices any specification for lantern-slides.

Cutting and Perforating 35-Mm Positive Raw-Stock and Negative Raw-Stock.—Previous specifications for 35-mm negative and positive raw-stock were contained in a single drawing published in the March, 1938, issue of the JOURNAL on p. 261, including the same perforation for both negative and positive film. After several years of trial of

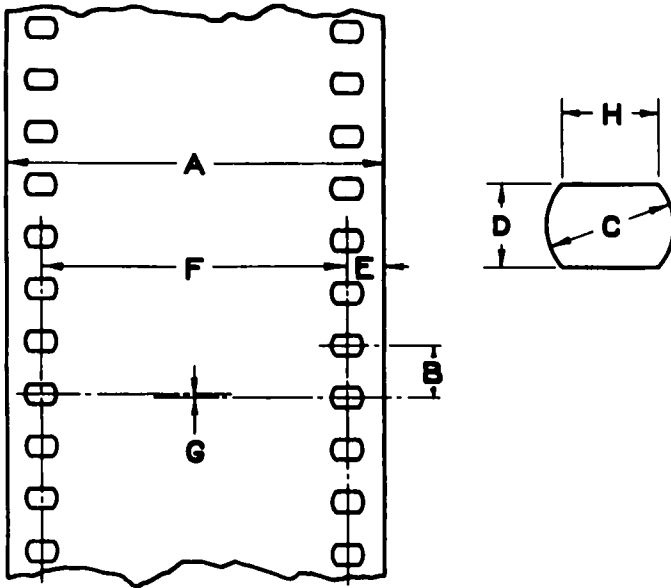
the single perforation, the Standards Committee, by letter-ballot, has approved the adoption of different perforations for positive and negative raw-stocks. The specifications are given on two following pages.

If after thirty days from the date of publication of this issue of the JOURNAL, no adverse comments are received by the Chairman of the Standards Committee from the membership of the Society with regard to these four items, the specifications described herein will be referred to the Board of Governors of the Society for action upon them as proposals for either American Standards or Recommended Practices. Comments on these proposals are invited from readers of the JOURNAL.

P. H. ARNOLD	D. B. JOY, <i>Chairman</i>	K. F. MORGAN
H. BAMFORD	A. F. EDOUARD	R. MORRIS
M. C. BATSEL	J. L. FORREST	WM. H. OFFENHAUSER
F. T. BOWDITCH	G. FRIEDL, JR.	G. F. RACKETT
M. R. BOYER	P. C. GOLDMARK	W. B. RAYTON
F. E. CARLSON	A. N. GOLDSMITH	E. C. RICHARDSON
T. H. CARPENTER	H. GRIFFIN	H. RUBIN
E. K. CARVER	A. C. HARDY	O. SANDVIK
H. B. CUTHBERTSON	E. HUSE	R. E. SHELBY
L. W. DAVEE	P. J. LARSEN	J. L. SPENCE
J. A. DUBRAY	C. L. LOOTENS	H. E. WHITE
	J. A. MAURER	
	G. S. MITCHELL	

(Please turn to next page.)

SMPE RECOMMENDED PRACTICE For 35-mm Film	SMPE January, 1941
CUTTING AND PERFORATING NEGATIVE RAW STOCK*	



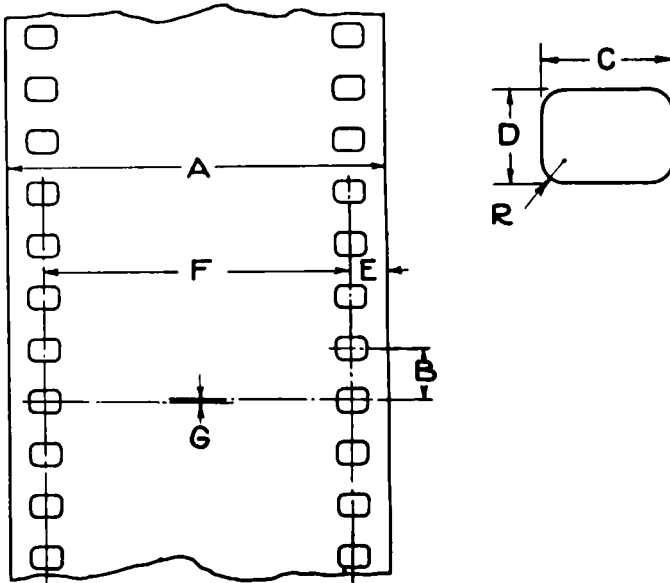
	<i>Millimeters</i>	<i>Inch Equivalents</i>
A	35.00 + 0.00 - 0.05	1.378 + 0.000 - 0.002
B	4.75 ± 0.013	0.1870 ± 0.0005
C**	2.794 ± 0.01	0.1100 ± 0.0004
D	1.85 ± 0.01	0.0730 ± 0.0004
E	3.40 ± 0.05	0.134 ± 0.002
F	28.17 ± 0.05	1.109 ± 0.002
G	Not > 0.025	Not > 0.001
H	2.08 ± 0.025	0.082 ± 0.001
L†	475.00 ± 0.38	18.70 ± 0.015

** Diameter of circle of curvature.
† L = length of any 100 consecutive perforation intervals.

* For picture negative and certain special processes.

These dimensions and tolerances apply to the material immediately after cutting and perforating.

SMPE RECOMMENDED PRACTICE For 35-mm Film	SMPE January, 1941
CUTTING AND PERFORATING POSITIVE RAW STOCK*	



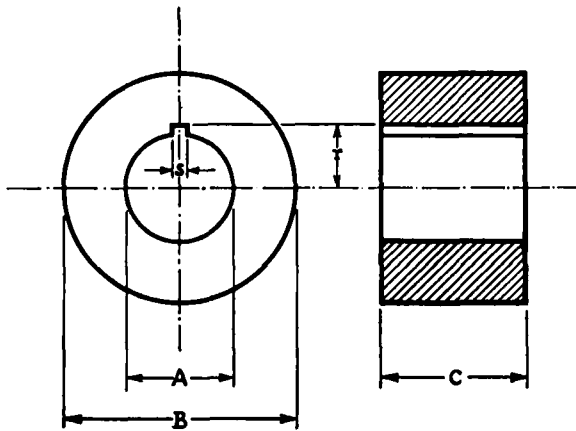
	<i>Millimeters</i>	<i>Inch Equivalents</i>
A	35.00 + 0.00 - 0.05	1.378 + 0.000 - 0.002
B	4.750 ± 0.013	0.1870 ± 0.0005
C	2.794 ± 0.01	0.1100 ± 0.0004
D	1.98 ± 0.01	0.0780 ± 0.0004
E	3.40 ± 0.05	0.134 ± 0.002
F	28.17 ± 0.05	1.109 ± 0.002
G	Not > 0.025	Not > 0.001
L**	475.00 ± 0.38	18.70 ± 0.015
R	0.5	0.020

** L = length of any 100 consecutive perforation intervals.

* For positive prints and sound recording.

These dimensions and tolerances apply to the material immediately after cutting and perforating.

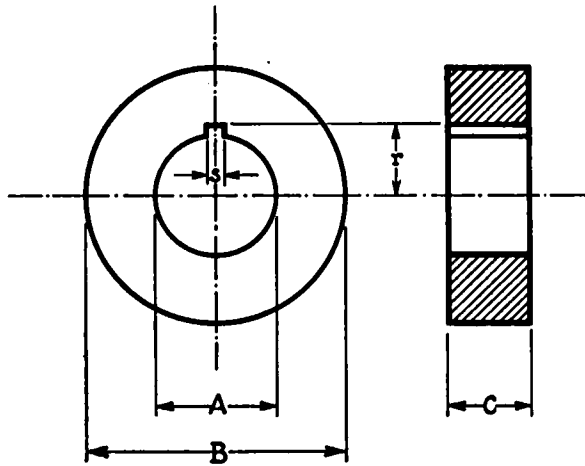
AMERICAN STANDARDS For 35-mm Film	SMPE January, 1941
RAW STOCK CORES	



	<i>Millimeters</i>	<i>Inch Equivalents</i>
<i>A</i>	25.90 ± 0.20	1.020 ± 0.008
<i>B</i>	50.00 ± 0.25	1.968 ± 0.010
<i>C</i>	34.50 ± 0.50	1.358 ± 0.020
<i>Recommended Practice</i>		
<i>r</i>	16.70 ± 0.30	0.657 ± 0.012
<i>s</i>	4.00 ± 0.20	0.157 ± 0.008

Bore A to fit freely to hub 25.40 ± 0.1 mm or 1.000 ± 0.004 inch diameter.

<p>SMPE Recommended Practice For 16-mm Film</p> <hr/> <p>RAW STOCK CORES</p>	<p>SMPE January, 1941</p>
--	-------------------------------



	<i>Millimeters</i>	<i>Inch Equivalents</i>
<i>A</i>	25.90 ± 0.20	1.020 ± 0.008
<i>B</i>	50.00 ± 0.25	1.968 ± 0.010
<i>C</i>	15.50 ± 0.50	0.610 ± 0.020
<i>Recommended Practice</i>		
<i>r</i>	16.70 ± 0.30	0.657 ± 0.012
<i>s</i>	4.00 ± 0.20	0.157 ± 0.008

Bore *A* to fit freely to hub 25.40 ± 0.1 mm or 1.000 ± 0.004 inch diameter.

	SMPE RECOMMENDED PRACTICE For 35-mm Film	
	PROJECTION SCREEN BRIGHTNESS	SMPE January, 1941

The brightness at the center of a screen for viewing 35-mm motion pictures shall be 10 ± 1 ft-lamberts when the projector is running, with no film in the gate.