

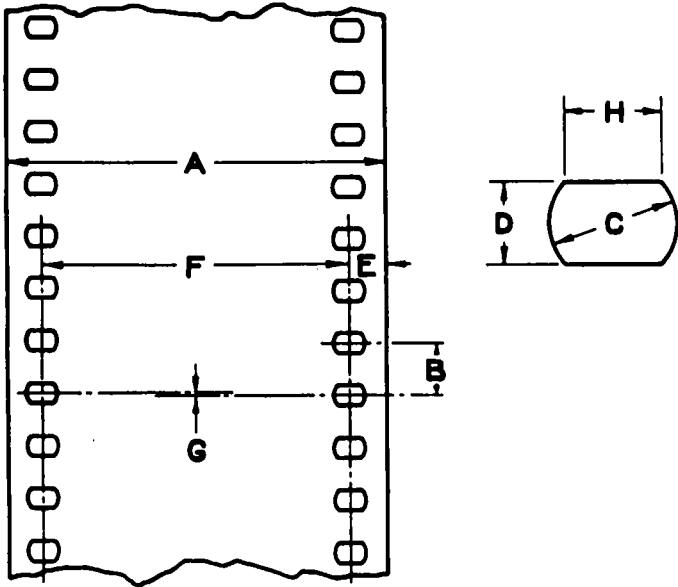
AMERICAN MOTION PICTURE STANDARDS

The five American Motion Picture Standards which appear on the following pages were recently adopted by the American Standards Association. Prior to that time these specifications had been approved through the Committee on Standards as SMPE Recommended Practices and were published in that form in the JOURNAL of March, 1941, pages 262-66.

The technical material in this present publication is identical with that previously given, the respective specifications having served for a reasonable period as Recommended Practices without evidence of need for any changes. This final step in the normal standardization procedure is thus evidence of the satisfactory completion of the work originated several years ago within our Society.

F. T. BOWDITCH, *Chairman*
Committee on Standards, SMPE

AMERICAN STANDARD For 35-Mm Motion Picture Film	ASA Z22.34-1944
CUTTING AND PERFORATING NEGATIVE RAW STOCK*	
<i>(Revision of part of Z22.1-1930)</i>	
Approved May 15, 1944	



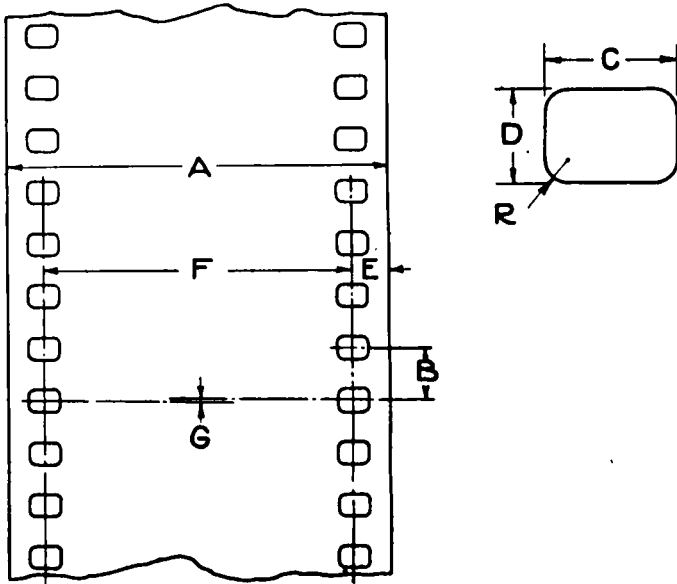
	Millimeters	Inches
A	35.00 + 0.00 - 0.05	1.378 + 0.000 - 0.002
B	4.75 ± 0.013	0.1870 ± 0.0005
C**	2.794 ± 0.01	0.1100 ± 0.0004
D	1.85 ± 0.01	0.0730 ± 0.0004
E	3.40 ± 0.05	0.134 ± 0.002
F	28.17 ± 0.05	1.109 ± 0.002
G	Not > 0.025	Not > 0.001
H	2.08 ± 0.025	0.082 ± 0.001
L†	475.00 ± 0.38	18.70 ± 0.015

** Diameter of circle of curvature.
 † L = length of any 100 consecutive perforation intervals.

* For picture negative and certain special processes.

These dimensions and tolerances apply to the material immediately after cutting and perforating.

AMERICAN STANDARD For 35-Mm Motion Picture Film CUTTING AND PERFORATING POSITIVE RAW STOCK* (Revision of part of Z22.1-1930)	ASA Z22.36-1944 Approved May 15, 1944
---	--



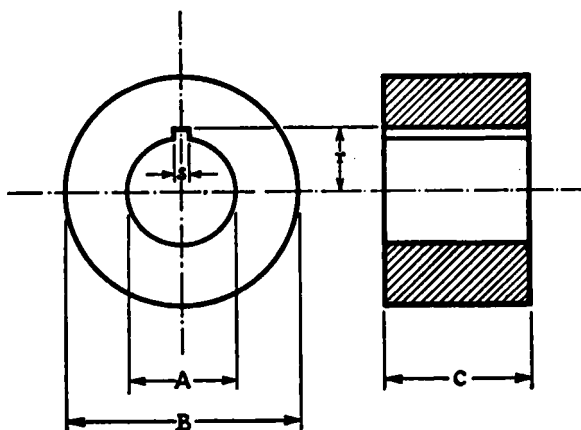
	Millimeters	Inches
A	35.00 + 0.00 - 0.05	1.378 + 0.000 - 0.002
B	4.750 ± 0.013	0.1870 ± 0.0005
C	2.794 ± 0.01	0.1100 ± 0.0004
D	1.98 ± 0.01	0.0780 ± 0.0004
E	3.40 ± 0.05	0.134 ± 0.002
F	28.17 ± 0.05	1.109 ± 0.002
G	Not > 0.025	Not > 0.001
L**	475.00 ± 0.38	18.70 ± 0.015
R	0.5	0.020

** L = length of any 100 consecutive perforation intervals.

* For positive prints and sound recording.

These dimensions and tolerances apply to the material immediately after cutting and perforating.

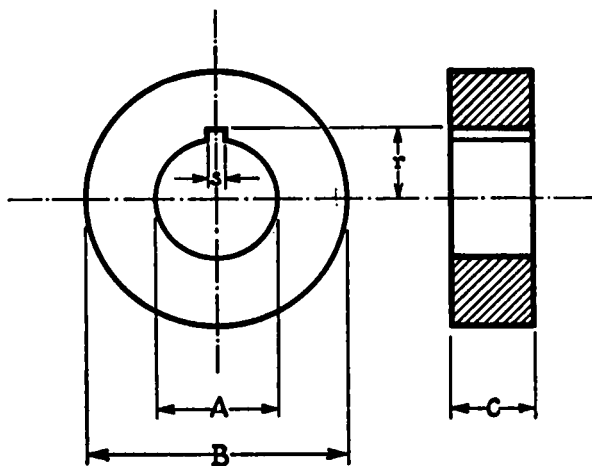
AMERICAN STANDARD For 35-Mm Motion Picture Film	ASA Z22.37-1944
RAW STOCK CORES	Approved May 15, 1944



	<i>Millimeters</i>	<i>Inches</i>
<i>A</i>	25.90 ± 0.20	1.020 ± 0.008
<i>B</i>	50.00 ± 0.25	1.968 ± 0.010
<i>C</i>	34.50 ± 0.50	1.358 ± 0.020
<i>Recommended Practice</i>		
<i>r</i>	16.70 ± 0.30	0.657 ± 0.012
<i>s</i>	4.00 ± 0.20	0.157 ± 0.008

Bore A to fit freely to hub 25.40 ± 0.1 mm or 1.000 ± 0.004 inch diameter.

AMERICAN STANDARD For 16-Mm Motion Picture Film	ASA Z22.38-1944 Approved May 15, 1944
RAW STOCK CORES	



	<i>Millimeters</i>	<i>Inches</i>
<i>A</i>	25.90 ± 0.20	1.020 ± 0.008
<i>B</i>	50.00 ± 0.25	1.968 ± 0.010
<i>C</i>	15.50 ± 0.50	0.610 ± 0.020
<i>Recommended Practice</i>		
<i>r</i>	16.70 ± 0.30	0.657 ± 0.012
<i>s</i>	4.00 ± 0.20	0.157 ± 0.008

Bore A to fit freely to hub 25.40 ± 0.1 mm or 1.000 ± 0.004 inch diameter.

AMERICAN STANDARD For 35-Mm Motion Picture Film	ASA Z22.39-1944
SCREEN BRIGHTNESS	Approved May 15, 1944

The brightness at the center of a screen for viewing 35-mm motion pictures shall be $10 \pm_1^4$ ft-lamberts when the projector is running with no film in the gate.