

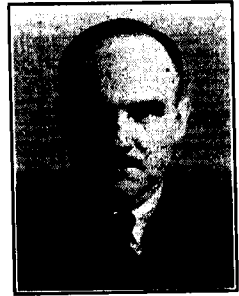
OFFICERS AND GOVERNORS OF THE SOCIETY



DONALD E. HYNDMAN**
Past-President



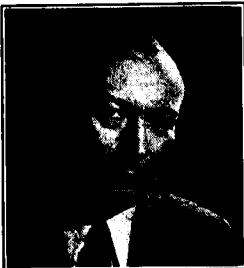
JOHN A. MAURER*
Engineering Vice-President



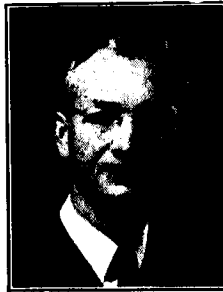
EARL I. SPONABLE**
Executive Vice-President



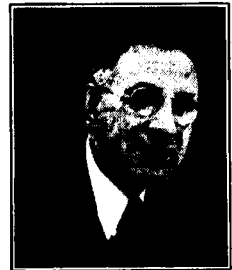
LOREN L. RYDER**
President



M. RICHARD BOYER*
Financial Vice-President

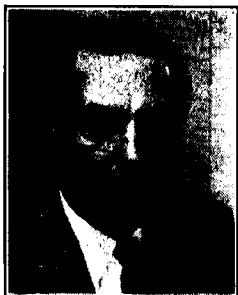


CLYDE R. KEITH**
Editorial Vice-President



WILLIAM C. KUNZMANN**
Convention Vice-President

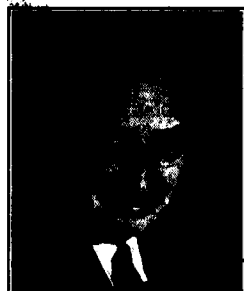
* Term expires Dec. 31, 1947; ** Term expires Dec. 31, 1948.



G. T. LORANCE**
Secretary



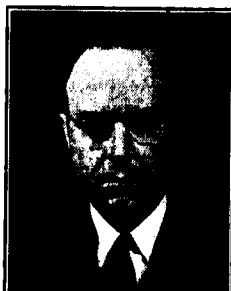
E. A. BERTRAM*
Treasurer



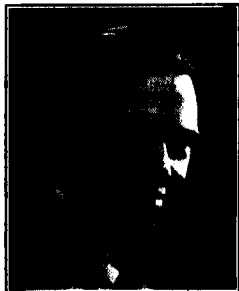
JOHN W. BOYLE**
Governor



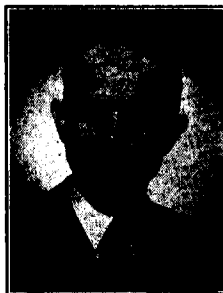
FRANK E. CARLSON*
Governor



ALAN W. COOK*
Governor



ROBERT M. CORBIN**
Governor



CHARLES R. DAILY**
Governor



JOHN G. FRAYNE*
Governor

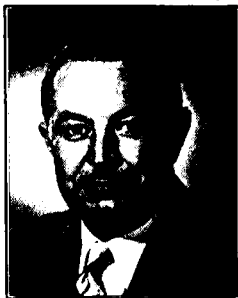


DAVID B. JOY**
Governor

* Term expires Dec. 31, 1947; ** Term expires Dec. 31, 1948.



PAUL J. LARSEN*
Governor

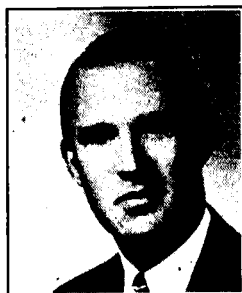


WESLEY C. MILLER*
Governor



HOLLIS W. MOYSE**
Governor

OFFICERS AND MANAGERS OF SECTIONS



JAMES FRANK, JR.*
Chairman,
Atlantic Coast Section



A. SHAPIRO*
Chairman,
Midwest Section



WALLACE V. WOLFE*
Chairman,
Pacific Coast Section

ATLANTIC COAST SECTION

*JAMES FRANK, JR., *Chairman*

*FRANK E. CAHILL, JR., *Past-Chairman*

*H. EDWARD WHITE, *Sec.-Treas.*

*HERBERT BARNETT

**F. J. GRIGNON

*J. A. NORLING

*H. D. BRADBURY

**THEODORE LAWRENCE

**W. H. RIVERS

* Term expires Dec. 31, 1947; ** Term expires Dec. 31, 1948.

MIDWEST SECTION

*A. SHAPIRO, *Chairman**ROBERT E. LEWIS, *Sec.-Treas.**O. B. DEPUE
**W. C. DEVRVY*S. A. LUKES
**C. E. PHILLIMORE*C. H. STONE
**R. T. VAN NIMAN

PACIFIC COAST SECTION

*WALLACE V. WOLFE, *Chairman**HOLLIS W. MOYSE, *Past-Chairman**S. P. SOLOW, *Sec.-Treas.**G. M. BEST
**A. C. BLANEY*P. E. BRIGANDI
**F. L. EICH*G. E. SAWYER
**N. L. SIMMONS

 * Term expires Dec. 31, 1947; ** Term expires Dec. 31, 1948.