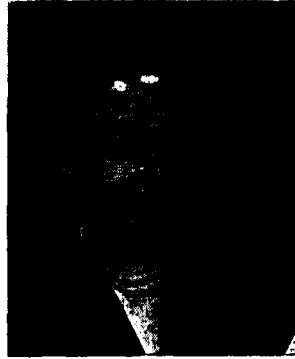


## Staff Changes

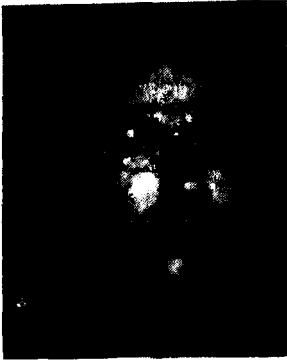
---

### MARGARET C. KELLY

Miss Margaret C. Kelly, Office Manager for the Society of Motion Picture Engineers, resigned her position on May 1, 1948, and has moved to Scranton, Pennsylvania, to join her husband Mr. Harry Reiley. Miss Kelly first was Financial Assistant for four years before becoming Office Manager in 1947. She was born in Wilkes-Barre, Pennsylvania, and attended Wyoming Seminary and Bucknell University. Before joining the staff of the SMPE, she was Office Manager for the Lion Chemical Company.



Margaret C. Kelly



Sigmund M. Muskat

### SIGMUND M. MUSKAT

On April 9, 1948, Sigmund M. Muskat took up his duties as Office Manager for the SMPE. Mr. Muskat was born in Newark, New Jersey, and is now attending the School of Business at the City College of New York, where he is working toward the degree of Bachelor of Business Administration. During the war, he was connected with the Army Exchange Service and taught accountancy in the Army Exchange Service School. He has had varied experience in the public and private accounting fields and before joining the staff of the Society of Motion Picture Engineers was Budgetary Comptroller for a soft drink manufacturer.

---

### Office Staff—New York

EXECUTIVE SECRETARY  
Boyce Nemeec  
STAFF ENGINEER  
Thomas F. Lo Giudice

OFFICE MANAGER  
Sigmund M. Muskat  
JOURNAL EDITOR  
Helen M. Stote

---

Cecelia Blaha  
Dorothy Johnson

Ethel Lewis  
Beatrice Melican

---