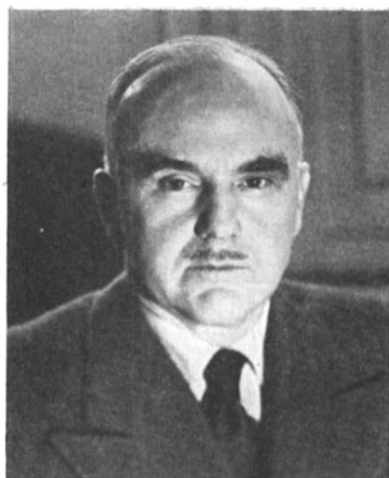


**OFFICERS
OF THE SOCIETY**
April, 24, 1950



PETER MOLE
Executive Vice-President
1949-50



EARL I. SPORABLE
President
1949-50



LOREN L. RYDER
Past-President
1949-50



FRED T. BOWDITCH
Engineering Vice-President
1950-51



CLYDE R. KEITH
Editorial Vice-President
1949-50



RALPH B. AUSTRIAN
Financial Vice-President
1950-51



WILLIAM C. KUNZMANN
Convention Vice-President
1949-50



ROBERT M. CORBIN
Secretary
1949-50



FRANK E. CAHILL, JR.
Treasurer, 1950-51



HERBERT BARNETT
Governor, 1949-50



KENNETH F. MORGAN
Governor, 1949-50



NORWOOD L. SIMMONS
Governor, 1949-50



J. P. LIVADARY
Governor, 1950



WILLIAM B. LODGE
Governor, 1950



LORIN D. GRIGNON
Governor, 1950-51



PAUL J. LARSEN
Governor, 1950-51



WILLIAM H. RIVERS
Governor, 1950-51



EDWARD S. SEELEY
Governor, 1950-51

R. T. VAN NIMAN
Governor, 1950-51





MALCOLM G. TOWNSLEY
Governor, 1950



FRANK E. CARLSON
Governor, 1950



EDWARD SCHMIDT
Governor, 1950



GEORGE W. COLBURN
Governor, 1950



CHARLES R. DAILY
Governor, 1950

OFFICERS AND MANAGERS OF SECTIONS

ATLANTIC COAST: *Chairman*, Edward Schmidt; *Secretary-Treasurer*, H. C. Millholland; *Managers*, E. A. Bertram, E. Dudley Goodale, R. G. Mann, Pierre Mertz, R. E. Shelby, E. M. Stifle

CENTRAL: *Chairman*, G. W. Colburn; *Secretary-Treasurer*, C. E. Heppberger; *Managers*, F. E. Carlson, E. W. D'Arcy, R. E. Lewis, A. Shapiro, Lloyd Thompson, M. G. Townsley

PACIFIC COAST: *Chairman*, C. R. Daily; *Secretary-Treasurer*, Vaughn Shaner; *Managers*, Larry Aicholtz, G. M. Best, L. D. Grignon, J. P. Livadary, Roy Monfort, E. H. Reichard

STUDENT CHAPTER OFFICERS

NEW YORK UNIVERSITY: *Chairman*, William F. Boden; *Secretary-Treasurer*, Gerald I. Rosenfeld

UNIVERSITY OF SOUTHERN CALIFORNIA: *Chairman*, Melvin R. Kells; *Secretary-Treasurer*, Eric T. Sjolander



WILLIAM F. BODEN
Chairman,
New York University



MELVIN R. KELLS
Chairman, University of
Southern California