

Officers  
of the Society  
April, 1952



HERBERT BARNETT  
*Executive Vice-President*  
1951-52



PETER MOLE  
*President*  
1951-52



EARL I. SPORABLE  
*Past-President*  
1951-52



FRED T. BOWDITCH  
*Engineering Vice-President*  
1952-53



JOHN G. FRAYNE  
*Editorial Vice-President*  
1951-52



FRANK E. CAHILL, JR.  
*Financial Vice-President*  
1952-53



WILLIAM C. KUNZMANN  
*Convention Vice-President*  
1951-52



ROBERT M. CORBIN  
*Secretary*  
1951-52



BARTON KREUZER  
*Treasurer, 1952-53*



FRANK E. CARLSON  
*Governor, 1951-52*



WILLIAM B. LODGE  
*Governor, 1951-52*



OSCAR F. NEU  
*Governor, 1951-52*



THOMAS T. MOULTON  
*Governor, 1951-52*



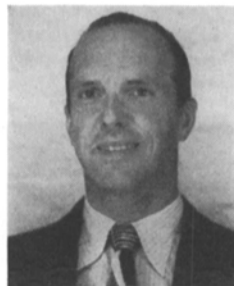
NORWOOD L. SIMMONS  
*Governor, 1951-52*



JOSEPH E. AIKEN  
*Governor, 1952-53*



MALCOLM G. TOWNSLEY  
*Governor, 1951-52*



FRED G. ALBIN  
*Governor, 1952-53*



ELLIS W. D'ARCY  
*Governor, 1952-53*



GEORGE W. COLBURN  
*Governor, 1952-53*



JOHN K. HILLIARD  
*Governor, 1952-53*



AXEL G. JENSEN  
*Governor, 1952-53*



C. E. HEPBERGER  
*Governor, 1952*



VAUGHN C. SHANER  
*Governor, 1952*



E. M. STIFLE  
*Governor, 1952*

## OFFICERS AND MANAGERS OF SECTIONS

*ATLANTIC COAST: Chairman, E. M. Stifle; Secretary-Treasurer, H. C. Milholland; Managers, E. A. Bertram, H. A. Chinn, F. N. Gillette, Richard Hodgson, D. B. Joy, John G. Stott.*

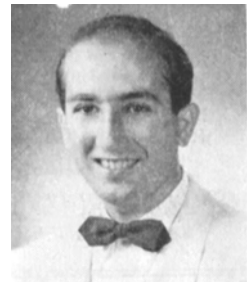
*CENTRAL: Chairman, C. E. Heppberger; Secretary-Treasurer, J. L. Wassell; Managers, E. E. Bickel, W. C. Eddy, I. F. Jacobsen, K. M. Mason, R. H. Ray, M. G. Townsley.*

*PACIFIC COAST: Chairman, Vaughn C. Shaner; Secretary-Treasurer, P. C. Caldwell; Managers, F. G. Albin, A. C. Blaney, L. G. Dunn, A. M. Gundelfinger, W. F. Kelley, R. E. Lovell.*

## STUDENT CHAPTER OFFICERS

*NEW YORK UNIVERSITY:  
Under Reorganization*

*UNIVERSITY OF SOUTHERN CALIFORNIA: Chairman, Donald Stern;  
Secretary-Treasurer, Arthur Schneider*



DONALD STERN  
*Chairman, 1952*