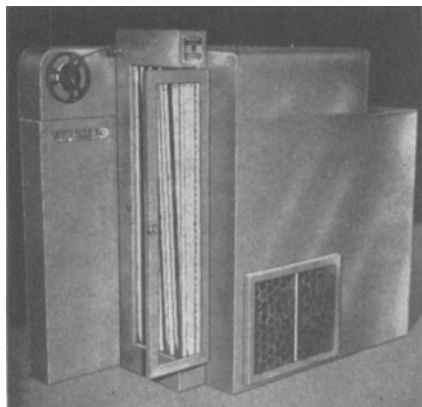


New Products

Further information about these items can be obtained direct from the addresses given. As in the case of technical papers, the Society is not responsible for manufacturers' statements, and publication of these items does not constitute endorsement of the products or services.

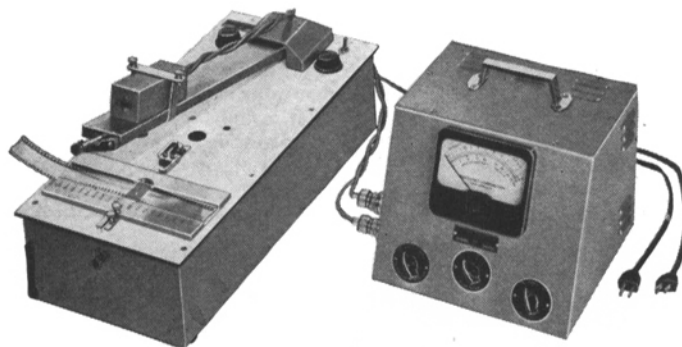


The **Bridgamatic Model R-TV** is a new rapid, spray-jet 16mm reversal developing machine recently announced by S.O.S. Cinema Supply Corp., 602 West 52 St., New York 19. Originally designed for race tracks so that judges could spot fouls a few minutes after the end of a race, it is now being installed for television stations, with news events films reported developed and ready for screening within 3 min. It operates at about 100 degrees and up to 85 ft/min. It is water-jacketed throughout with immersed tubing to preheat chemicals for faster action in the pressurized jet spray developer. Elevators have been eliminated by use of a patented over-drive to speed operation. Only 100 ft of leader is used. The drybox is designed to hold only 28 ft of film, to be dried in a few seconds after leaving the wash by 120° filtered air. The machine has a 400-ft magazine to take loading spools right from the camera. It is designed for automatic daylight operation and is installed with 18 sq ft of floor space. A method of synchronizing $\frac{1}{4}$ -inch magnetic tape has been developed by Rangertone, Inc., to meet the interest in it for motion-picture sound recording not only for originals but also for safeties especially when doing final mixes.

The special feature of this synchronizing method is the use of an additional recording head to the right of the usual heads as shown in the illustration. This head makes a balanced recording in the center of the tape of a small part of the voltage driving the camera motor; then this recording serves as a means of holding the tape in strict step on playback even though there are no sprocket holes. The main feature reported, however, is that the full dynamic

PHOTOVOLT Sound-Track Densitometer

for measurement of density on sound track of 35mm and 16mm motion picture film and for evaluation of sensitometric step-tablets



Suitable also for general black-and-white and color densitometry

Write for Bulletin No. 245

Price, complete \$445

The instrument is also available with Multiplier Photometer Mod. 520-A (additional price \$230) for color densitometry with sharp-cutting narrow-band interference filters

PHOTOVOLT CORP.

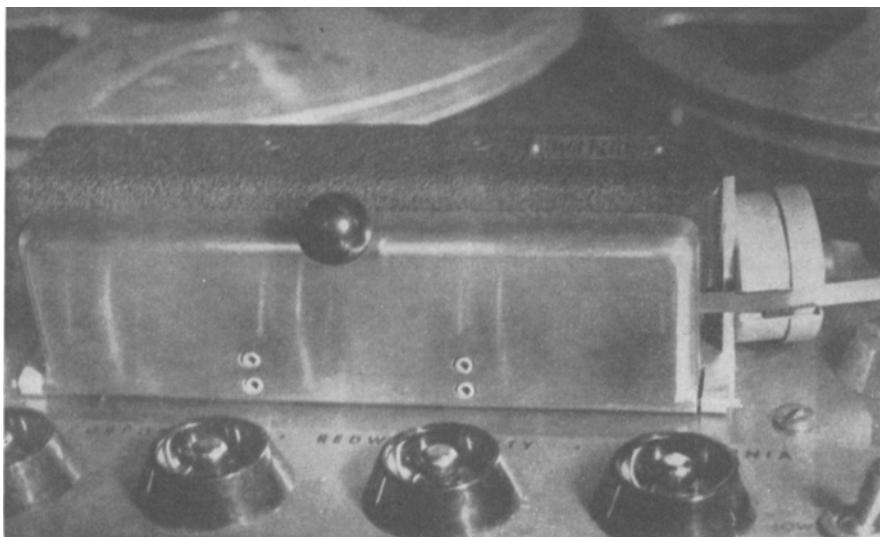
95 Madison Ave.

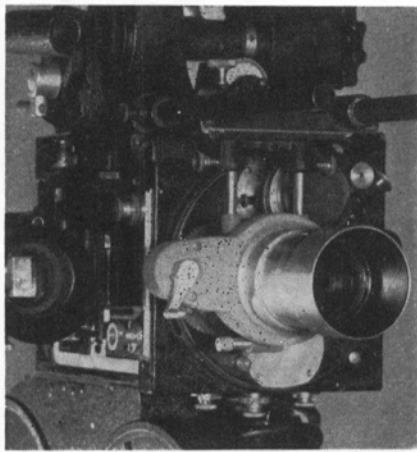
New York 16, N. Y.

sound possibilities of the tape are left unimpeded to give the best possible recording.

This system is available not only on Rangertone equipments but also may be applied to any professional tape recorder. Standard adaptations are reported by Rangertone as made on RCA, Ampex, Magnecord and Presto recorders. For most installations where recording the sound is all that is required, installation of this head and the associated control circuits

adds little weight, for no extra boxes or cords are added. Such adaptations cost about \$300, depending upon the recorder. The recorders are shipped to Rangertone, Inc., 73 Winthrop St., Newark 4, N.J., and are reported to be converted and reshipped within 48 hr. There are Rangertone equipments to accomplish transfer points for carrying the good sound to either 35mm or 16mm film, and these, depending upon the type of recorder, cost about \$2000.





A rotating lens adaptable to 16mm and 35mm motion-picture and television cameras for the purpose of reproducing images at any angle is being offered by the Camera Mart, Inc., 1845 Broadway, New York 23. By cranking the handle of the revolving housing, a subject or scene may be shown revolving slowly or rapidly, clockwise or counterclockwise. Or by cranking the handle gently back and forth, shipboard motion may be suggested. The Rotator Lens will fit into the revolving housing of the Camart Optical FX Unit for most 16mm and some 35 mm cameras and can be used with the camera baseplate and double arm assembly provided with the complete unit. Shown here is a Rotator Lens as used on the Mitchell 35mm Standard Camera. There are special adapters for TV cameras.

The Emdeco Model CU-236 Cinephoto-micrograph Time Lapse Assembly is announced by the Electro-Mechanical Development Co., 2337 Bissonet, Houston, Tex. This equipment was designed for the purpose of automatically photographing under a microscope any material, transparent or opaque, which involves a time change in the material. In special applications, a temperature-controlled chamber or incubator may be used to enclose a microscope. For other applications, the specimen may be heated or cooled while the photography is in progress. Bolex, Cine Kodak or Bell & Howell standard 16mm cameras may be used. The capacity of the camera is 4,000 pictures with one load (100 ft of 16mm film). The unit will automatically photograph the subject material at uniformly spaced predetermined intervals, usually at a rate of 16 frames/min or less. The processed 16mm film is then projected at a normal frame speed of 8, 16 or 24 frames/sec, showing changes representing hours at normal rate in a matter of minutes.

The camera mount base plate is attached at the top of the 5-ft steel stand for positioning above the microscope. The camera drive mechanism, which advances the film one frame per pulse, closes the shutter of the camera and turns off the illuminator after each exposure, is actuated by the timing and control box. This device provides selection of 1, 2, 4, 8 and 16 frames/min. The complete assembly including a Bolex camera, costs \$1,133.

4-Track Magnetic Test Films

Ten Different 35 mm Types
Now Available For:

CinemaScope-equipped
Theaters and Theater
Service Engineers

1. Level Balance Film	1000-cycle, 4-track	50 ft.	(SL-1)
2. Multifrequency Reel	40 to 12,000 cycles, 4-track	425 ft.*	(MF-1)
3. Loudspeaker Balance Reel	Identical speech and music on four tracks progressively in this order—2,1,3,4	300 ft.*	(LB-1)
4. Stereophonic Reel	Picture with stereo sound and 12,000-cycle control signal on track four	330 ft.*	(ST-1)
5. Flutter Film	3000-cycle, 4-track	50 ft.	(FL-1)
6. Loudspeaker Phasing Film	Signal of uniform level, 400-cycle or 500-cycle frequency-warbled simultaneously on tracks 1, 2, and 3, at a 5-cycle rate (specify crossover frequency desired)	50 ft.	(LP-1)
7. Constant Level Film	8000-cycle, 4-track to check azimuth	50 ft.	(AZ-1)
8. Channel-Four Film	12,000/1000 cycle	50 ft.	(CH-4)
9. Projector Alignment Chart	Picture Only	100 ft.	(PR-1)
10. Projector Alignment Chart—Optical Track	Picture only, standard sprocket holes (made by Motion Picture Research Council)	100 ft.	CSOS

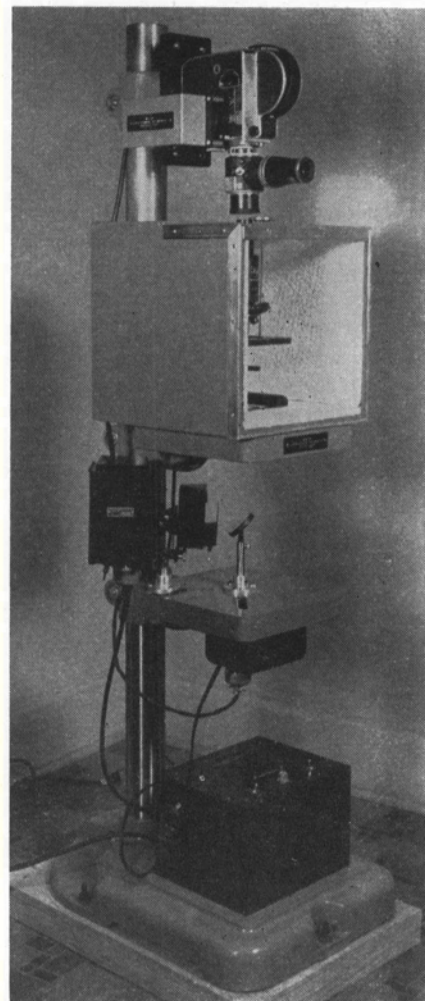
*These lengths approximate.

BASIC SET consists of types 1, 2, 7 and 9. This group is a "must" for every theater service engineer.

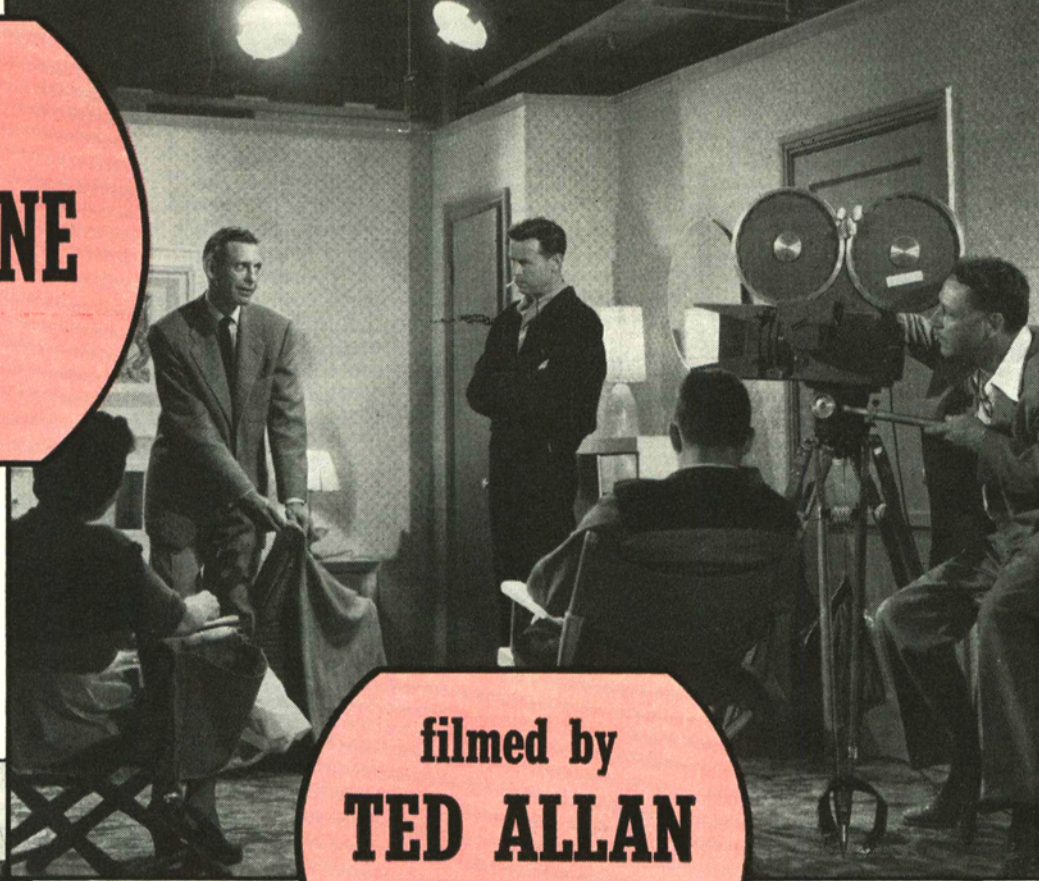
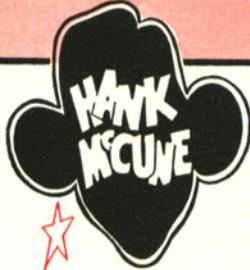
CATALOG FROM:
Society of Motion Picture and Television Engineers

55 West 42d Street,

New York 36, N. Y.



The HANK McCUNE TV Show



filmed by
TED ALLAN
Studios

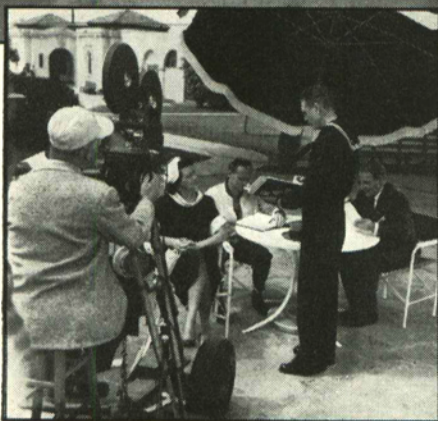


...in **COLOR** with the
AURICON "SUPER 1200"

16mm Sound-on-Film Camera!

NAVY STORY

Filmed at Destroyer Base Reception Center, San Diego, California, with cooperation of the United States Navy.



FANTASY

Dream scene from "Aladdin and the Magic Lamp" story in the Hank McCune TV Show Series.



Ted Allan, veteran Hollywood Photographer of the Stars, is one of the many professional film producers whose first choice for dependable television filming of the highest quality, is an Auricon 16mm Camera.

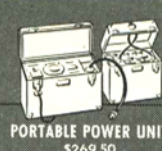
The "Hank McCune Show," a comedy series soon to be seen by millions over national TV networks, is being filmed in natural color with the "Super 1200" Camera. Ted Allan says, "45,000 feet of film have been run through the Auricon Camera without a film-scratch or loss of a foot of film!"

Write for your free copy of the complete Auricon Catalog, which includes the "Super 1200" Camera, a superb photographic instrument. Sold with a 30 day money-back guarantee, you must be satisfied!

AURICON
BERNDT-BACH, INC.

6946 Romaine Street, Hollywood 38, Calif.

The **Auricon** Hollywood Line
SOUND-ON-FILM EQUIPMENT SINCE 1931



Theatre Network Television, Inc., 575 Madison Ave., New York 22, announces that it has purchased 50 theater-screen television projection units designed and manufactured for hotel closed-circuit television by General Precision Laboratory Inc. This new equipment will make possible simultaneous closed-circuit business meetings in as many as 50 hotels located in 50 different cities from coast to coast, and will augment TNT's current network of over 100 theaters.

The equipment, known as model PB 610, provides adjustable pictures ranging in size from 4 X 6 ft to 9 X 12 ft, giving television viewing for audiences numbering anywhere from 50 to 500 or more people. In addition, the transaction includes some of GPL's standard theater television projection units which will provide pictures from 9 X 12 ft to 24 X 36 ft, to be used in the largest hotel ballrooms and theaters accommodating 1000 people or more. Installation and service for the new equipment will be in the hands of the RCA Service Co., Inc.

Society members have for many years purchased attractive hand-engrossed membership certificates for display in their offices or homes. These certificates were always priced, at least as far back as the records go, at \$1.50. This is now less than their cost and so it has been necessary to increase the price of certificates effective October 1, to \$2.50.

Lighting equipment is again covered very extensively in the latest catalog, catalog D, released by Mole-Richardson Co., 939 N. Sycamore Ave., Hollywood 38, Calif. In addition to illustrating and describing extensively the many items of equipment the company manufactures, the catalog contains numerous photographs showing actual use of equipment in interesting setups on the sound stages of major motion-picture studios, industrial film producers and television film makers. Other sections are devoted to useful data on power distribution, showing amperage consumption, amperage carrying capacity of cables and typical three-wire and two-wire distribution systems; lighting for color photography; globe characteristics; and illumination tables showing light intensity and spot diameter for spot lamps and flood lamps.

Employment Service

These notices are published for the service of the membership and the field. They are inserted for three months, at no charge to the member. The Society's address cannot be used for replies.

Positions Wanted

Motion Picture Production. Desire position as assistant to producer. Background includes camera experience, some directing in 35mm productions. Age 24. Write: Harry Wuest, 137 Summit Ave., Upper Montclair, N.J.

Electronic Engineer. 20 yrs experience in all phases of audio; responsible for prominent part in development of the Perspecta stereophonic

system; comprehensive experience in technical education, classroom, laboratory and the preparation of textbooks and technical literature; advanced training in economics and industrial administration; many responsible posts held. British born, came to U.S. July 1953. Active member I.E.E., I.R.E., A.E.S., SMPTE. Seeks progressive position in West. Write: Norman H. Crowhurst, 150-46 18th Ave., Whitestone 57, N.Y.

16mm Motion-Picture Production. Would like position with aggressive, responsible firm with opportunities for advancement. Have been operating own film company majoring in TV film commercials but am now liquidating as present market holds little future. Has been mainly one-man operation: selling, writing, producing, billing and collecting. Have had successful business but area offers no future for advancement. Will send audition film. Will make permanent move only. Age 28. Write: M. R. Young, T-V Commercial Films, 1215 No. Copia St., El Paso, Texas.

Positions Available

Timers, color and/or black-and-white film required by motion-picture laboratory. Supervisory experience or ability desired. Send resume and small photograph to Du Art Film Labs, Inc., 245 West 55 St., New York 19.

Photographic Equipment Technologist, \$5940 per year. Applicants must have bachelor's degree in technology, engineering or one of the physical sciences, plus 3 yr professional experience of a scientific or technical nature, including 2 yr of difficult and important work in the technology of photography; or 4 yr experience, demonstrating a mastery of the fundamental physical and mathematical sciences underlying professional technological work and a theoretical and practical understanding of the application of those sciences to photography which is comparable to that acquired by completion of a standard technological or scientific curriculum in an accredited college, may be substituted for the required bachelor's degree. Write: David A. Lana, Head, Industrial Relations Dept., Office of Naval Research, Special Devices Center, Port Washington, N.Y.

Motion-Picture Laboratory Technician (Sensitometry), GS-8, \$4620 per year. Applicants must have at least 4½ years experience in all phases of motion-picture film processing in black-and-white and color. Position requires ability to handle quality control in processing and to make recommendations for and assist in improving the product. Further information from MCGCER, Headquarters, Air Materiel Command, Wright-Patterson Air Force Base, Ohio.

Photographic Sales Technician. Require competent technician with at least two years' college chemistry and phototechnical school training or equivalent. Must have thorough knowledge of black-and-white, color, studio, and photofinishing techniques. Must show definite interest in sales and willingness to travel. Send brief resume, including approximate salary requirements, to Gerald G. Wood, AnSCO, 29 Charles St., Binghamton, N.Y.

Laboratory Technician with years of experience and thorough knowledge of all phases of motion picture laboratory work—as assistant to plant superintendent. **Sensitometric Control Man** with thorough background and experience—full responsibility. **Sound Engineer** to maintain and operate magnetic and optical re-recording equipment. Applicants should contact: Herbert R. Pilzer, Circle Film Laboratories, Inc. 33 West 60th St., New York 23. Tel. Co 5-2180

35mm Motion Picture Service Man. Openings in this country and Europe; experience not required if engineering graduate or if experienced in similar field. Apply to Army & Air Force Motion Picture Service, Engineering Depot, Building 207-C, 4300 Goodfellow Blvd., St. Louis 20, Mo.

Professional Services

ELLIS W. D'ARCY & ASSOCIATES

Consulting and Development Engineers
Xenon-Arc Applications
Motion-Picture Projection
Magnetic Recording and Reproduction
7045 N. Osceola Ave., Chicago
Phone: Chicago—Newcastle 1-0993
Washington—Oliver 2-2340

PROFESSIONAL MOTION PICTURE PRODUCTION EQUIPMENT

Cameras, Sound Recording, Editing,
Laboratory and Affiliated Equip.
Consulting Services by Qualified Engineers
Domestic and Foreign
REEVES EQUIPMENT CORP.
10 E. 52nd St., NYC
Cable: REEVESQUIP

LAB-TV

PROFESSIONAL
16mm Black and White
REVERSAL PROCESSING
Processing on hourly schedules for
TV Stations and Producers
Write for Circular
247 W. 46th St., New York 36

WILLIAM B. SNOW

Consulting Engineer
Acoustics—Electronics
Stereophonic Recording
1011 Georgina Avenue
Santa Monica, California
EXbrook 4-8345

HIGH-SPEED PHOTOGRAPHY

Fastax Representative
Fastax Cameras, Accessories, Film
Fastax Photographic Service
Photographic Analysis Company
100 Rock Hill Rd., Clifton, N. J.
Phone: Prescott 8-6436

FILM PRODUCTION EQUIPMENT

From a single source, equipment for
Production—Processing
Recording—Editing
Domestic and Foreign
S.O.S. Cinema Supply Corp.
Dept. TE, 602 W. 82nd St., N.Y.C.
Cable: SOSOUND

Professional cards available to members, 12 insertions, 2 x 1 in., \$60