

SUSTAINING MEMBERS

SOCIETY OF MOTION PICTURE AND TELEVISION ENGINEERS

ATTAINMENT OF THE OBJECTIVES OF THE SMPTE IS AIDED BY THE FINANCIAL SUPPORT OF THE MEMBER COMPANIES LISTED BELOW

Aaton des Autres, Inc.	Century Projector Corp.	Harrison by GLW, Inc.
Abekas Video Systems Inc.	Chapman/Leonard Studio Equipment	HEDCO Electronic Devices Corp.
Academy of Motion Picture Arts & Sciences	Alfred Chrosziel Filmtechnik GmbH	Hitachi Denshi America, Ltd.
ADC Telecommunications, Inc.	Chyron Corp.	Hollywood Film Co.
A. F. Associates, Inc.	Cinema Products Corp.	Houston Fearless 76, Inc.
Agfa-Gevaert, N.V.	Cinemills Corp.	Hughes Communications, Inc.
Wilhelm Albrecht GmbH Studlogerate	Cinequip, Inc.	Ikegami Electronics (U.S.A.), Inc.
Allen Avionics, Inc.	Clark Wire & Cable Co.	Image Transform, Inc.
Allen Products Co.	Coherent Communications, Inc.	Image Video Ltd.
Allied Film & Video	Communications Engineering Inc.	Imagica Corp.
Amber Technology Pty. Ltd.	Comprehensive Video Supply Corp.	Imagine, Inc.
American Society of Cinematographers	Condor Broadcast Video Center	International Cinema Equip. Co.
Ampex Corp.	Consolidated Film Industries (CFI)	Intertec Publishing Corp.
Amtel Systems, Inc.	Convergence	Irene Laboratories
Angenieux Corp. of America	Corporate Communications Consultants, Inc.	J & R Film Co., Inc.
Anton/Bauer, Inc.	Cox Enterprises, Inc.	JVC Professional Products Co.
Aphex Systems, Ltd.	Deluxe Laboratories	Kem New York, Inc.
Arriflex Corp.	DeSisti Lighting/DESMAR Corp.	Leitch Video of America, Inc.
Kinotone, Inc.	Digital F/X, Inc.	Lexicon, Inc.
Asaca/Shibasaki Corp. of America	Digital Processing Systems Inc.	Lider Cine
The Association of Cinema and Video Laboratories, Inc.	Digital Video Systems Corp.	Lightmaker, a div. of Camera Platforms Intl., Inc.
Atlab Australia	The Walt Disney Co.	Lowel-Light Mfg., Inc.
Avid Technology, Inc.	DI-Tech Inc.	LTM Corp. of America
Avitel Electronics Ltd.	Dolby Laboratories, Inc.	Magna-Tech Electronic Co., Inc.
Ballantyne of Omaha, Inc./Strong Intl.	Du Art Film Laboratories, Inc./Du Art Video	Magni Systems, Inc.
Band Pro Film/Video, Inc.	Dubner Computer Systems, Inc.	MAG-ZON Inc.
BARCO N. V.	DYNAIR Electronics, Inc.	Management Graphics, Inc.
David Bayliss Ltd.	East Coast Video Systems (ECVS, Inc.)	Matthews Studio Equipment, Inc.
BCS-The BroadCast Store, Inc.	Eastman Kodak Co.	Maxell Corp. of America
BHP, Inc.	Echolabs	Merlin Engineering Works
Birns & Sawyer, Inc.	Ediflex Systems	Micron Audio Products, Ltd.
Bonded Services	Evertz Microsystems Ltd.	Microtime, Inc.
Branch and Appleby Ltd.	Filmline Technologies	Microwave Networks
Bremson Data Systems, Inc.	FOR-A Corp. of America	Midwest Communications Corp.
Broadcast Video Rentals, Ltd.	Fostex Corp. of America	Miller Fluid Heads (USA) Inc.
BTS Broadcast Television Systems, Inc.	Foto-Kem Industries, Inc.	Mitchell Camera Corp.
CAM-LOK, Inc.	FPC Inc. (a Kodak Co.)	Mitsubishi Electric Sales America, Inc. Professional Electronics Div.
The Camera Mart, Inc.	Fujinon Inc.	Mole-Richardson Co.
Camera Service Center, Inc.	Fuji Photo Film U.S.A.	Montage Group Ltd.
Canon U.S.A., Inc.	Adolph Gasser, Inc.	Motion Picture Assn. of America, Inc.
Capital Cities/ABC, Inc.	GEPCO International, Inc.	Motion Picture Enterprises, Inc.
Dwight Cavendish Co.	Alan Gordon Enterprises, Inc.	Movilecam F. G. Bauer Filmtechnik GmbH
CBS, Inc.	Graham-Patten Systems, Inc.	MPL Film & Video, Inc.
CEI Technology	Grass Valley Group, Inc.	Multidyne Electronics, Inc.
Century Precision Cine/Optics	Gray Engineering Labs., Inc.	NAC Inc.
	R/Greenberg Associates, Inc.	

National Assn. of Broadcasters
 National Broadcasting Co., Inc.
 National TeleConsultants, Inc.
 NEC America, Inc.
 Broadcast Equipment Div.
 NEVE
 NHK Technical Services Co., Ltd.
 Nikon Inc., Electronic Imaging
 NVision, Inc.
 O'Connor Engineering Labs
 Odetics, Inc. (Broadcast Div.)
 Okl Electric Industry Co., Ltd.
 Optical Disc Corp.
 OSRAM Corp.
 Otari Corp.
 Paltex
 Panavision, Inc.
 Panther Corp. of America
 PERROTT Engineering Labs, Inc.
 Peterson International Ent. Ltd.
 Phillips Components
 Discrete Products Div.
 Photo-Sonics, Inc.
 Pinnacle Systems, Inc.
 Plastic Reel Corp. of America
 Professional Film & Video Equip. Assn.
 Quanta Corp.
 Quantel
 Rangertone Research Inc.
 Multi-Track Magnetics
 Rank Cintel Inc.

Rank Film Laboratories Ltd.
 Rank Taylor Hobson Ltd.
 RDS Corp.
 Redlake Corp.
 Research Technology International/
 Lipsner Smith Co.
 Rohde & Schwarz, Inc.
 Rosco Laboratories
 Ryder Sound Services, Inc.
 Sachtler Corp. of America
 Showscan Film Corp.
 Sigma Electronics Inc.
 Skotel Corp.
 Smart Theatre Systems
 Snell & Wilcox
 Solid State Logic Inc.
 Sony Corp. of America, Business and
 Professional Products Group
 Sony of Canada Ltd.
 Communication Products Group
 Steenbeck, Inc.
 Strand Lighting
 Studer Revox America, Inc.
 Tajimi Electronics Co., Ltd.
 TASCAM—Prof. Div. of TEAC Corp.
 Teccon Enterprises Ltd.
 Technical Film Systems, Inc. (TFS)
 Technicolor, Inc.
 Technisphere Corp.
 Tektronix, Inc., Television Div.
 Teledyne Camera Systems

Telemetrics Inc.
 Telex Communications, Inc.
 Tentel Corp.
 Theatre Equipment Association
 Thomson Broadcast Inc.
 Thomson Video Equipement
 Tiffen Manufacturing Corp.
 Time Base Consoles
 Todd-AO/Glen Glenn Studios
 Toel Chemical Industry Co., Ltd.
 Trompeter Electronics
 TSM (Total Spectrum
 Manufacturing, Inc.)
 Ultimatte Corp.
 Unique Business Systems
 United Media, Inc.
 Utah Scientific, Inc.
 VGV, Inc.
 Vicon Industries (Professional
 Products)
 Video Accessory Corp.
 Video Design Pro
 Video Intl. Development Corp.
 Videotek, Inc.
 Vinten Equipment Inc.
 VVYX National Video Network
 Wheatstone Corp.
 YCM Laboratories
 Yokohama Cinema
 Laboratories, Inc.

WHY BECOME A SUSTAINING MEMBER

The SMPTE is a nonprofit organization that depends, in large measure, on the generous support of its Sustaining Members to conduct its many activities that benefit the motion-picture and television industries.

Throughout the year, the Society sponsors miniconferences, seminars, and hands-on workshops. These serve to augment the monthly section meetings as a means of providing the latest technical information to the people in our industry.

The Television Conference, which started modestly, has grown in status and prestige. It has become the premier forum for the introduction of new television technologies such as HDTV and digital television recording. The national conference is the largest annual gathering in the television and motion-picture industries devoted to the presentation of technical papers and the interchange of ideas.

One of the most important activities in which the Society engages is in the aiding of establishing standards. Most notable recently was the establishment of the "C" format for 1-in. television recording and the Type D-1 Digital Video Recording standard. Current efforts concern production standards for HDTV and investigation into the feasibility of 30

frames/sec as a new film production standard.

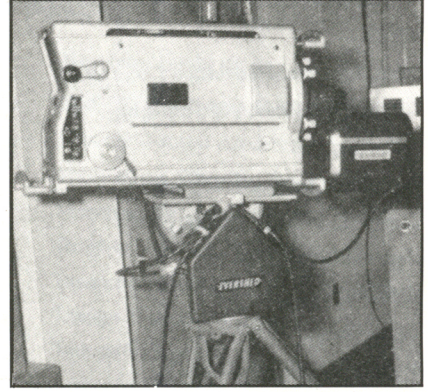
These activities have direct bearing on your organization's future, and members of your staff may already be involved in these engineering projects as individuals. Your support, at the corporate level, will help insure that these vital activities can continue.

In addition, here are some specific benefits of SMPTE Sustaining Membership:

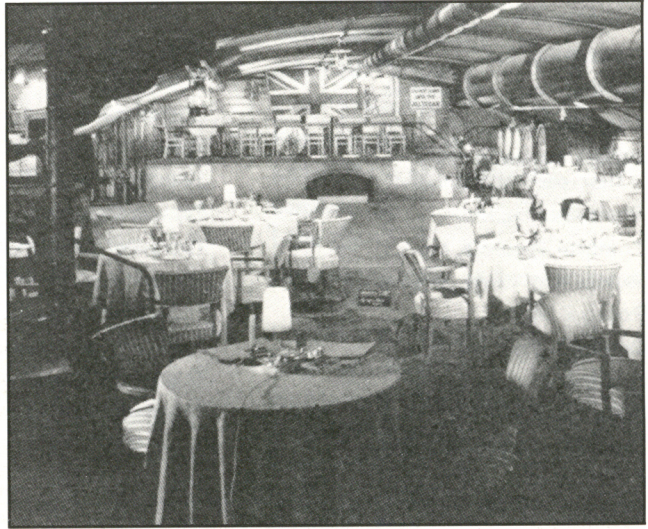
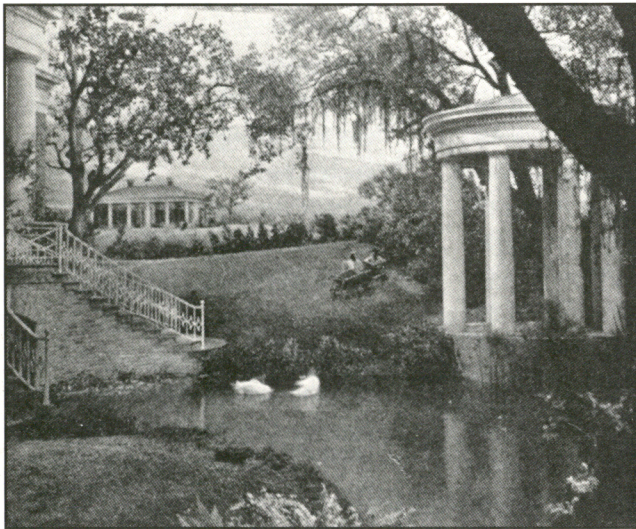
- Listing of your company within the monthly *SMPTE Journal*.
- A complete description of your company and its services in the SMPTE annual *Directory for Members*.
- A subscription to the *SMPTE Journal* and the Society's monthly newsletter.
- A wood-mounted, metallic plaque.
- A press release announcing your company's joining the SMPTE.
- A discount for exhibiting at the SMPTE Technical Conferences.
- The distinction of being among more than 207 companies and organizations supporting the aims and activities of the SMPTE.

The Society invites applications for Sustaining Membership from other interested companies • Information may be obtained from Charles H. Jablonski, Chairman, Sustaining Membership Committee, NBC, 30 Rockefeller Plaza, New York, NY 10112, or from Society Headquarters. • Addresses and descriptions of Sustaining Members appear in the *Directory for Members*, published in April 1990.

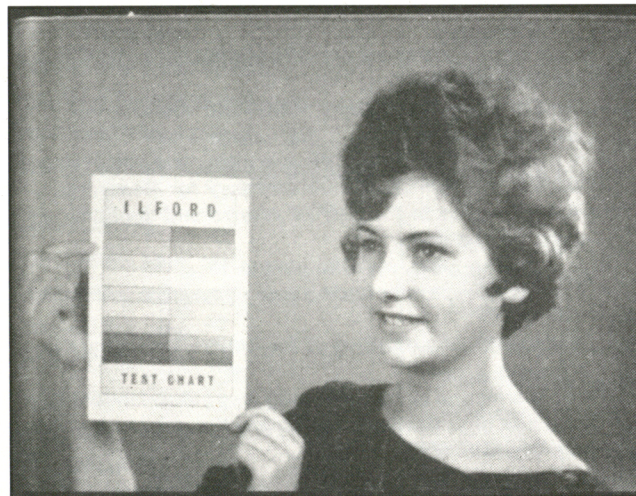
SMPTE Historical Reflections



(Left) Control console with auto switching in Control Room 1; (Right) Remote-controlled camera • *Automatic Switching at the Edmonton Television Studios* • S. Glover • *JSMPT*E, November 1966.



(Left) Typical exterior set on motion picture sound-stage; (Right) Set with ceiling of acoustical board simulating concrete • *Solving Acoustic and Noise Problems Encountered in Recording for Motion Pictures* • William L. Thayer • *JSMPE*, November 1941.



(Left) Picture of model taken with a television camera using an image orthicon with BiAg photocathode; (Right) Picture of model taken with tri-alkali image orthicon used in the camera • *A Survey of Camera Tubes for Television Broadcasting* • Walter E. Turk • *JSMPT*E, November 1966.