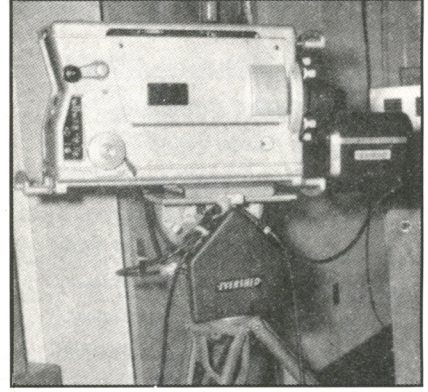
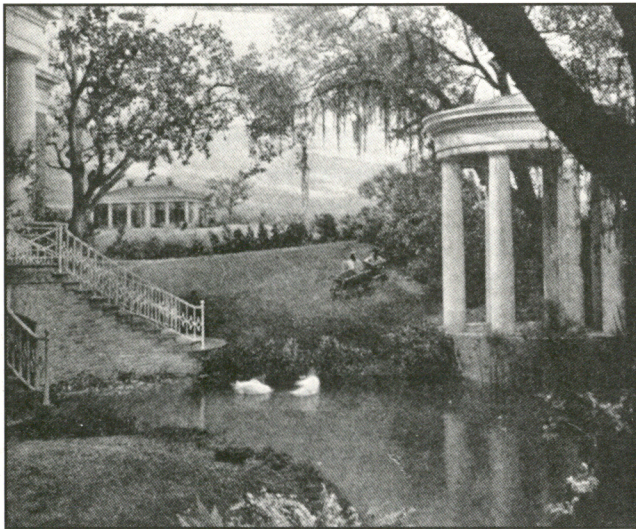


SMPTE Historical Reflections



(Left) Control console with auto switching in Control Room 1; (Right) Remote-controlled camera • *Automatic Switching at the Edmonton Television Studios* • S. Glover • *JSMPT*E, November 1966.



(Left) Typical exterior set on motion picture sound-stage; (Right) Set with ceiling of acoustical board simulating concrete • *Solving Acoustic and Noise Problems Encountered in Recording for Motion Pictures* • William L. Thayer • *JSMPE*, November 1941.



(Left) Picture of model taken with a television camera using an image orthicon with BiAg photocathode; (Right) Picture of model taken with tri-alkali image orthicon used in the camera • *A Survey of Camera Tubes for Television Broadcasting* • Walter E. Turk • *JSMPT*E, November 1966.