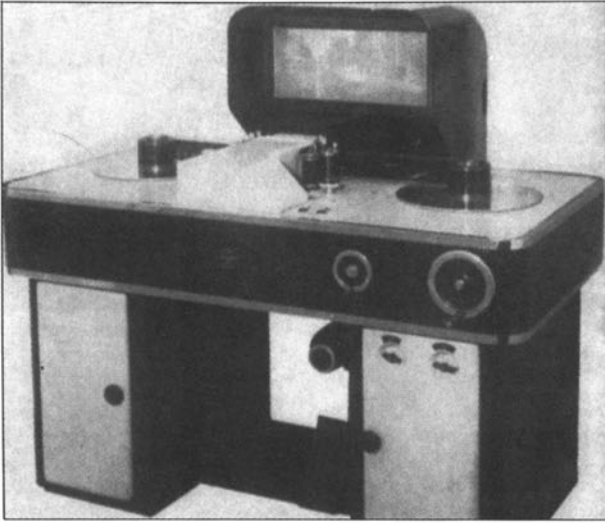


SMPTE Historical Reflections



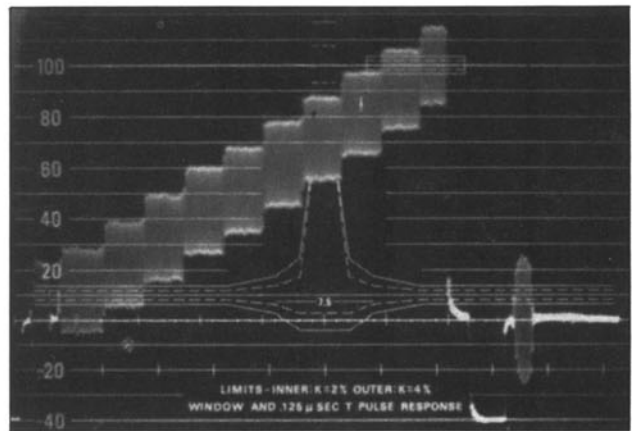
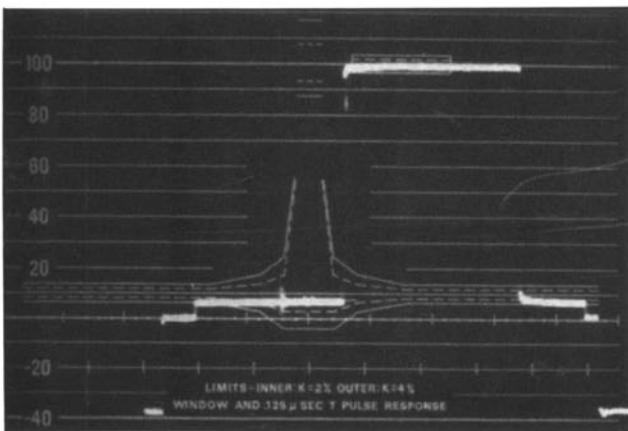
Editing table for preparing image selection printing charts • *Methods of Producing Different Release Prints from 35mm Conventional, Anamorphic and 70mm Motion Pictures* • M. Z. Wysotsky • *JSMPT*, February 1966.



Peep-hole and frame type viewfinder. The photo shows a spring type adapted to work against a cam on the lens housing for automatic parallax correction. The cameraman stands closer to the peep-hole in usual operation • *The Photographic Aspects of Television Operations* • H. R. Lubcke • *JSMPE*, February 1941.



(Left) "Chopped" amplitude reference pattern (off-screen photo); (Right) "Off screen" status indicating pattern • *A Television Bar Graph Generator* • G. Southworth • *JSMPT*, February 1966.



(Left) Sine-squared pulse and bar signal; (Right) Modulated stairstep signal. Flat response • *Monitoring of Vertical Interval Test Signals* • C. W. Rhodes • *JSMPT*, February 1966.