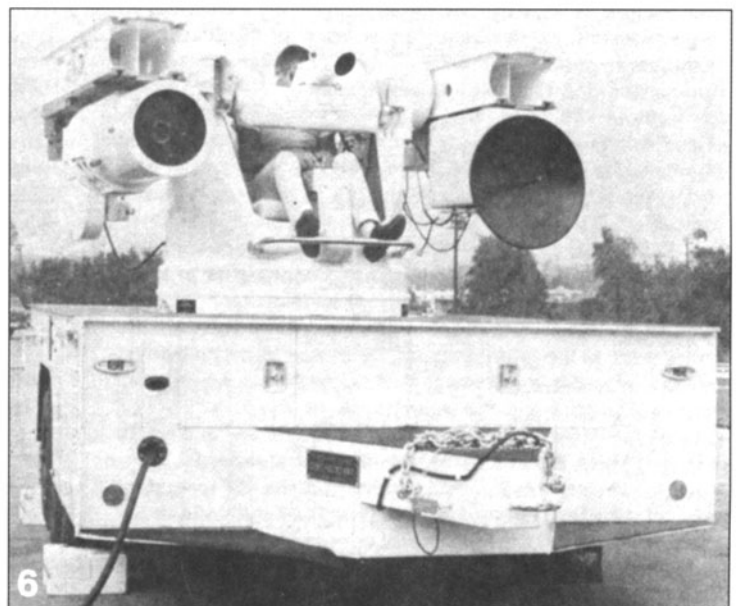
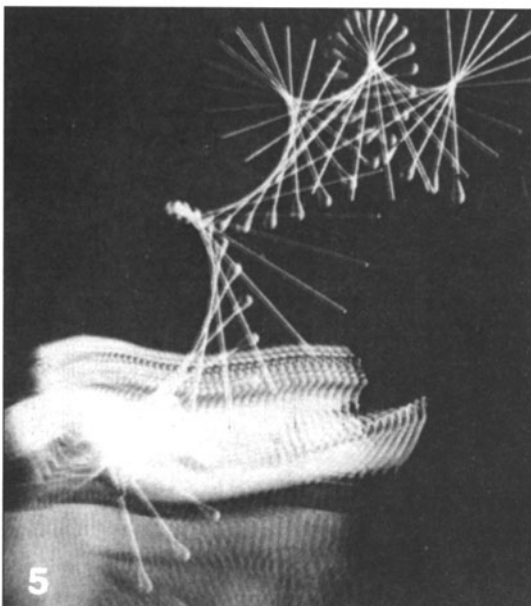
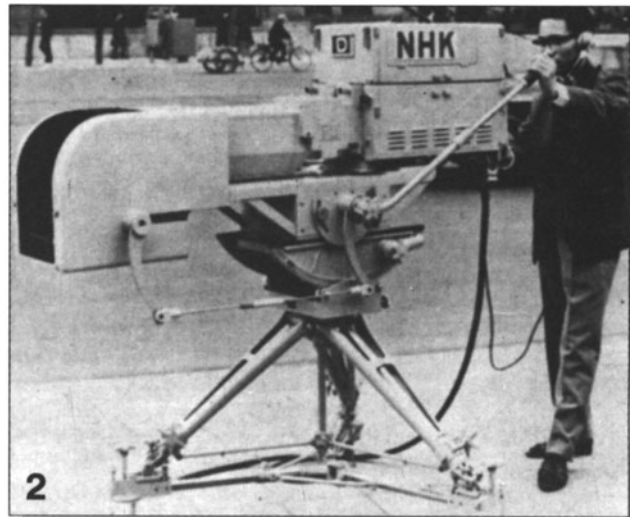


SMPTE Historical Reflections



1. ALOTS aerial camera; 2. Field type TV camera with mirror tracker (NHK); 3. Peregrine camera crane. Side view from driver's side showing picture monitors and some controls; 4. Studio 7: Video and lighting control room (BBC); 5. Study of motion using a stroboscopic light system (Edgerton, Germeshausen and Grier); 6. Photo-Sonics Cinesextant with radar-controlled automatic-focusing system • *Progress Committee Report for 1965* • R. E. Putnam • *JSMPT*, May 1966.