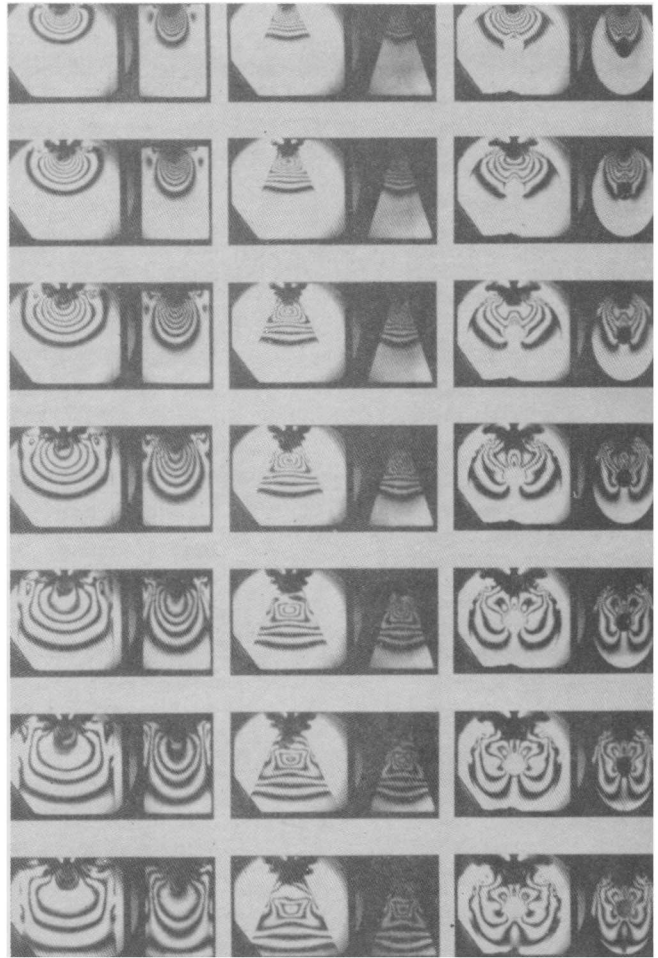
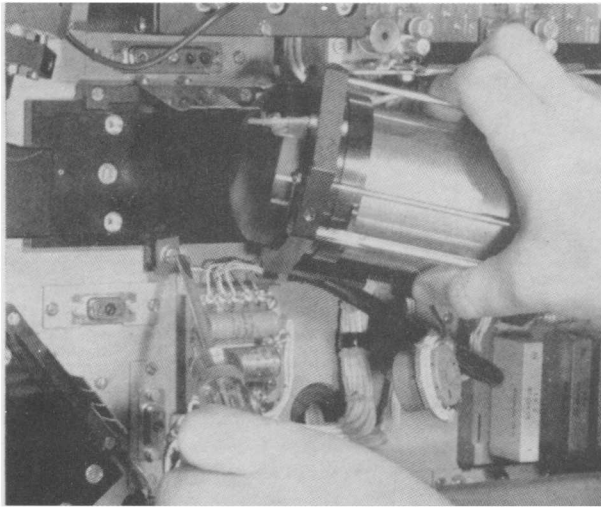
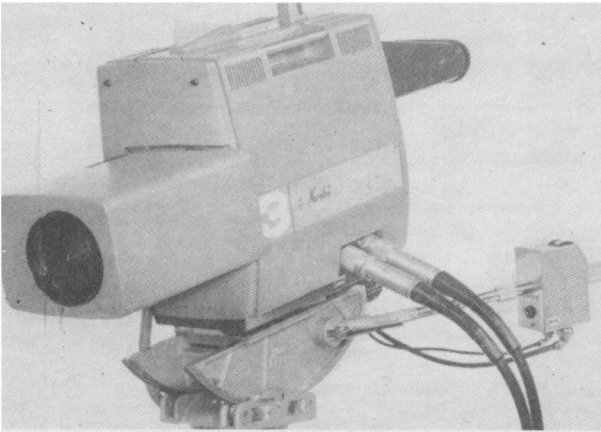
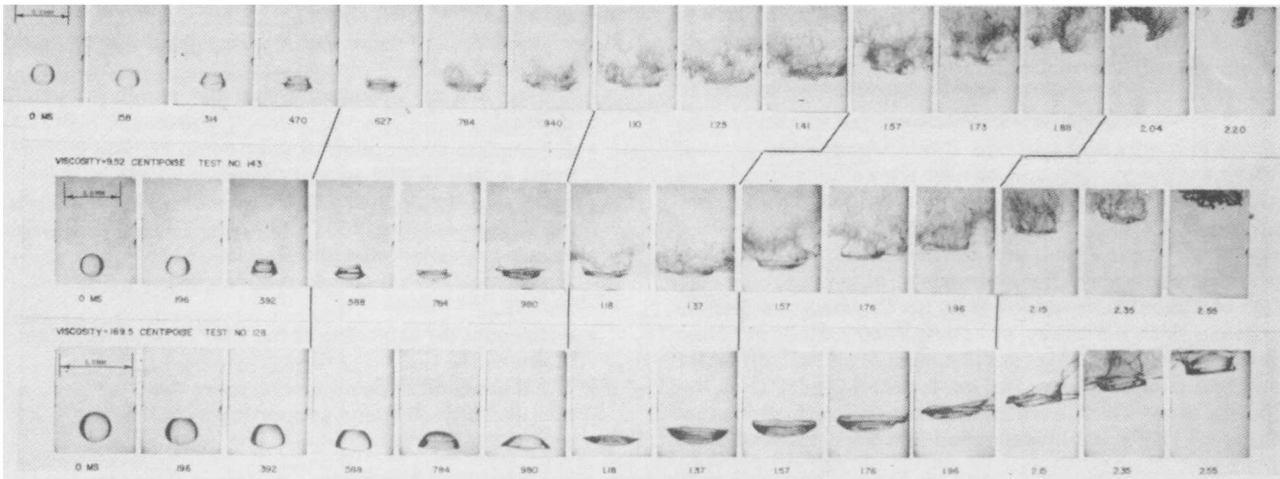


SMPTE Historical Reflections



(Top) PC70 camera head; (Bottom) Plumbicon and deflection assembly replacement • *Design of a New Plumbicon Color Camera Chain* • M. Fisher • *JSMPT*E, August 1966.

Dynamic stress patterns in various plane models, 6 μ sec between selected frames • *Photoelastic Studies of Dynamic Stresses in High Modulus Materials* • P.D. Flynn • *JSMPT*E, August 1966.



Effect of viscosity on breakup of drop: size, 2.1 mm; relative velocity, 127 ft/s • *Photographic Study of Breakup of Liquid Drops* • H.E. Wolfe • *JSMPT*E, August 1966.