

# PROPOSED SMPT E RECOMMENDED PRACTICE

## Storage of Edit Decision Lists on 3-1/2 in Disks



Page 1 of 2 pages

### 1 Scope

This practice specifies the file and directory structure of 3-1/2 in floppy disks used for storage and interchange of edit decision lists (EDLs). The specification is by reference to International Standards for 3-1/2 in disk formats, more commonly known as the "generic DOS format." This practice does not specify the contents of an EDL.

### 2 Normative references

The following standards contain provisions which, through reference in this text, constitute provisions of this practice. At the time of publication, the editions indicated were valid. All standards are subject to revision, and parties to agreements based on this practice are encouraged to investigate the possibility of applying the most recent edition of the standards indicated below.

ANSI X3.4-1986, Coded Character Set — 7-Bit American National Standard Code for Information Interchange

SMPT E 258M, Television — Transfer of Edit Decision Lists

ISO 646:1983, Information Processing — ISO 7-Bit Coded Character Set for Information Interchange

ISO 8860-1:1987, Information Processing — Data Interchange on 90 mm (3.5 in) Flexible Disk Cartridges Using Modified Frequency Modulation Recording at 7958 nprad on 80 Tracks on Each Side — Part 1: Dimensional, Physical and Magnetic Characteristics

ISO 8860-2:1987, Information Processing — Data Interchange on 90 mm (3.5 in) Flexible Disk Car-

tridges Using Modified Frequency Modulation Recording at 7958 nprad on 80 Tracks on Each Side — Part 2: Track Format

ISO 9293:1987, Information Processing — Volume and File Structure of Flexible Disk Cartridges for Information Interchange

### 3 Definitions and glossary

**edit decision list (EDL):** A list of audio/video content decisions which specify an audio/video product. Such a list is described by SMPT E 258M.

**element:** One item of an EDL, distinguished from the surrounding elements by terminators.

**terminator:** The two-character sequence, *CR LF*.

### 4 Storage of edit decision lists

**4.1 Physical, electrical, and magnetic characteristics of the storage medium**

EDLs shall be stored on 3-1/2 in disks conforming to ISO 8860-1:1987.

**4.2 Track format of the storage medium**

EDLs shall be stored on disks formatted in accordance with ISO 8860-2:1987. The formatted capacity shall be 720 kbytes.

**4.3 Files and directory entries for files containing edit decision lists**

Files containing EDLs shall be recorded in accordance with ISO 9293:1987.

Directory entries for files containing EDLs shall be in accordance with ISO 9293:1987.

The following additional parameters apply:

Files may be referenced from the root directory or from subdirectories.

Other files and subdirectories may be recorded on the same disk.

The name extension of files containing EDLs shall be "EDL."

The attributes and other defined fields of directory entries for files containing EDLs shall be in accordance with ISO 9293:1987.

### Annex A (informative) Formatted disk capacity

The formatted capacity of disks adhering to this practice is currently specified to be 720 kbytes. It is intended to allow the use of disks of higher capacity (such as 1.44 Mbytes),

### 4.4 Data content of files containing edit decision lists

The data content of files containing EDLs shall be characters encoded in accordance with ANSI X3.4-1986 and ISO 646:1983.

The characters shall be interpreted in accordance with SMPT E 258M. The provisions of clause 4 of ISO 9293:1987 shall not be applied to files containing EDLs.

**NOTE.** - The characters in files containing EDLs will be grouped into elements by terminators as defined by SMPT E 258M, and that terminators are defined to be the two-character sequence, *CR LF*.

when such disks have been standardized internationally and are generally available in editing systems and EDL manipulation systems.

# PROPOSED SMPTE RECOMMENDED PRACTICE

## Dimensions of 35- and 70-mm Motion-Picture Rewind Spindles

### 1 Scope

This practice specifies the dimensions of 5/16-in and 1/2-in spindles for both 35-mm and 70-mm motion-picture rewinds.

### 2 Dimensions

The dimensions shall be as given in figures 1 and 2 and table 1.

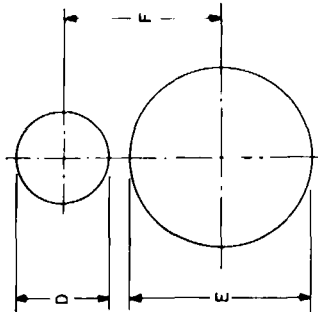
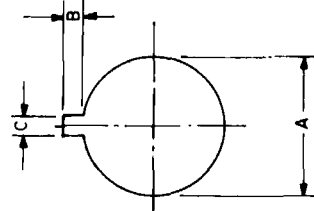


Figure 1 — 5/16-in spindle

Figure 2 — 1/2-in spindle

Table 1 — Dimensions

Dimensions	Inches	Millimeters
A	0.315 + 0.000 - 0.005	8.00 + 0.00 - 0.13
B	0.120 ± 0.010	3.05 ± 0.25
C	0.120 ± 0.010	3.05 ± 0.25
D	0.250 ± 0.010	6.35 ± 0.25
E	0.500 + 0.000 - 0.008	12.70 + 0.00 - 0.20
F	0.782 ± 0.010	19.86 ± 0.25

### Annex A (informative) Bibliography

#### Projection reels

ANSI/AIM MS34-1990, Dimensions for Reels Used for 16-mm and 35-mm Microfilm

ANSI/SMPTE 235-1987, Motion-Picture Equipment (16-mm) — Projection Reels — 200- to 2300-Ft Capacity

ANSI/SMPTE 241-1989, Motion-Picture Equipment — 35- and 70-mm Projection Reels

#### Shipping reels

ANSI/SMPTE 192-1991, Motion-Picture Equipment (35-mm) — Shipping Reels for Prints

#### Camera spools

ANSI PH1.33-1990, Photography (Film) — 16 mm, 35 mm, 70 mm and 105 mm Spools for Still-Picture Cameras — Dimensions