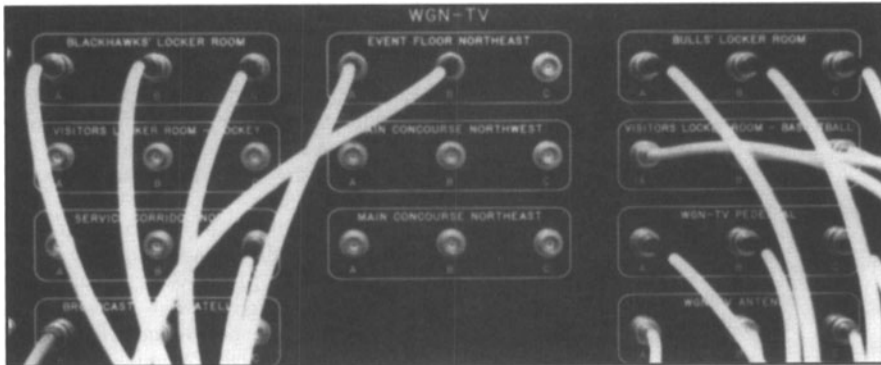


# New Products

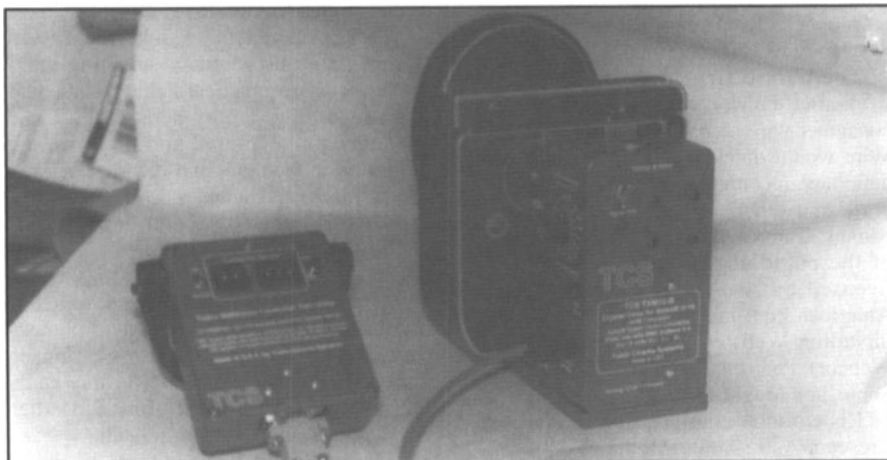


An example of a custom cable panel from Gepco.

## Cable and Cable Accessories

Gepco International, Inc., has announced its new **custom-built cable panels**. Using an idea, a CAD disk, or a sketch, a panel can be created based on the customer's individual needs. The sturdy panels are constructed in 1/16-in. or 1/8-in. aluminum

(anodized or laminate) in a variety of colors. Laminate finishes can be color-filled for easy function identification, and all engraving is done on computerized CAD/CAM equipment. Graphics for plastic finishes can be silk-screened or photographed.



The Milliframe Controller from Tobin Cinema Systems.

## Cameras/Camera Accessories

The **Tobin Milliframe Controller** from Tobin Cinema Systems has a detachable cable, up to seven different output frequencies per speed, and is usable with a wide variety of cameras. The device has a speed range of about 1 to 159,999 frames/sec, and speed can be selected in 0.001 frame/sec over the entire range.

Tobin has also introduced several crystal motors: the **TXM10-S** for the Arri 16-S and 16-M cameras and the **TXM10-B** for Bolex

H-16 cameras. Each has an electronic-base combine to provide 15 crystal speeds from 5 to 60 frames/sec. All of the speeds are HMI-compatible, for film footage without exposure pulsation under HMI or fluorescent lights; ten of the speeds are compatible with 60-Hz power, and eight with 50-Hz power. The **TXM-D** for the Krasnogorsk K-3 16mm camera has three crystal speeds: 12, 24, and 48 frames/sec. This model makes the camera fully usable for filming to sync playback, as in music videos.

## Software

The Ultimatte Corp. has announced **Ultimatte for Macintosh**, an Adobe Premiere plug-in software module for image compositing. This tool features Ultimatte Intelligence, which automatically matches the colors in the foreground and background video clips. Also included are

zoom/pan capabilities in order to see especially fine detail on the edges, a wipe tool that allows the user to see and compare the previous adjustment and the current adjustment, one level of UNDO that allows the user to back out of the previous control activity, and an RGB readout of what is taking place.

## Test/Measurement Equipment

New from Hewlett-Packard Co. is the **HP 89400 vector signal analyzer family**, which characterizes the advanced digital television signals soon to be carried by broadcasters and cable systems worldwide. A new option allows the analyzers to verify that the high-speed data streams containing digital video have been transferred accurately onto the RF carriers that transport them. Informative displays and precise measurements allow designers to see immediately whether their designs are operating as intended. The analyzers operate simultaneously in the time, frequency, and modulation domains; waveform measurements reveal signal peaks and instantaneous power levels.

The **VM100 automated measurement set** from Tektronix, Inc., is a lightweight baseband measurement tool designed for the cable television market. It quickly scans the input signal and automatically identifies and measures the selected test signal, including its field and line position.

The **RFM90 SignalMini signal level meter**, also new from Tektronix, is tailored to meet the requirements of fundamental cable TV installation applications. This handheld device includes a 48 to 860 MHz frequency range and up to 64 user-definable frequency setups. Other features include an easy-to-use interface; an in-service carrier-to-noise measurement; multistandard compatibility (NTSC, PAL, SECAM); a built-in AM/FM detector, speaker, and headphone jack; a replaceable battery; and a durable, weather-resistant case.

For further information regarding the new products and developments listed in this section, contact the companies directly at the addresses listed below:

**GEPCO International, Inc.**, 2225 W. Hubbard, Chicago, IL 60612-1613, (312) 733-9555; Fax: (312) 733-6416

**Hewlett-Packard Co.**, Direct Marketing Organization, P.O. Box 58059, MS51L-SJ, Santa Clara, Calif., 95051-8059

**Tektronix, Inc.**, 14180 S.W. Karl Braun Drive, P.O. Box 500, Beaverton, OR 97077-0001, (800) 835-9433

**Tobin Cinema Systems, Inc.**, 3227 49th Ave. S.W., Seattle, WA 98116-3206, Phone/Fax: (206) 932-7280

**Ultimatte Corp.**, 20554 Plummer St., Chatsworth, CA 91311, (818) 993-8007; Fax: (818) 993-3762