

# Classified

## Employment Service

*These notices are published for the service of the membership and the field. They are inserted for three months, at no charge to the member. The Society cannot be used for replies.*

### Positions Available

**Associate Director.** To assist director of "12 Tonight," keep track of story and tape changes, monitor segment time, and operate character generator. Will select visual/audio elements, coordinate and select file tape, create special effects and graphics. Requires degree in related field and 2 years experience directing and producing. Send resume to Maureen Pilla, WHYI, Inc., 150 N. Sixth St., Philadelphia, PA 19106. EOE.

**Broadcast Engineer.** Job duties include installation, maintenance, and repair of VHF and UHF TV transmitters, translators, and antenna systems at remote mountain top sites; repair and maintenance of news and studio broadcast equipment; assistance to production crew during live broadcasts; and occasional general building maintenance. Requires 2-year degree in electronics and 4 years experience in related position. Send resume to KOB-TV, Attn: Engineer, P.O. Box 1489, Medford, OR 97501.

## Film Equipment For Sale

Magna-Tech Equipment  
16/35mm Dual Dubbers  
Mono and Multi-track

Combination 16/35mm  
High Speed projectors  
with xenon lamphouses

35mm Recorders  
Mono, 4-Track and 6-Track

8LB Interlock Units  
JSK Advance/Retard Units

*Excellent Condition  
Quantities Available*

Contact:  
Bill Yee (212) 759-8311

**The Mix Place  
663 Fifth Avenue  
New York, NY 10022  
Fax: (212) 838-6952**

**Broadcast Maintenance Engineer.** Full-service production/post-production facility seeks highly qualified individual with minimum 5 years experience to establish procedures and take responsibility for daily maintenance and installation of established facility. Reply to Mark Wagner, c/o WMX Technologies, Inc., 720 Butterfield Rd., Lombard, IL 60148. (847) 572-8964.

**Consultant.** A person who can help to set up equipment to produce three-dimensional videos for a small business. Call Alvin Steinberg. Day phone: (212) 562-2419; after 7 p.m.: (212) 505-5276.

**Customer Support Engineers.** With background in station operations and system maintenance; bilingual English/Spanish; experience in PC technology, tape robotics, and network systems. Position is located in south Florida and requires international travel. Good communication skills and competent customer interaction required.

**Programmers.** Must have 2 years experience in DOS and Windows Platforms, and in object oriented PASCAL programming. BSCE, BSCS, or BSEE required.

Send resumes to MarCom, Louth Automation, 1731 E. Embarcadero Rd., Palo Alto, CA 94303. Fax: (415) 843-3666. E-mail: tracy@louth.com. EOE.

**Director of Engineering.** To manage all activities of technical support staff. Duties include monitoring a variety of video replication equipment, implementing preventative maintenance program, maximizing equipment availability, and working with vendors. Requires BA/BS in EE; 10 years management experience; PC literacy; and budgeting experience. Send resume to Mediacy, HR Dept. TMD, 1739 Doolittle Dr., San Leandro, CA 94577. Fax: (510) 618-2424. EOE.

**Firmware Engineers.** 3 positions available on real-time MPEG video encoder development team. BSEE/MSEE and 2 to 10 years experience with background in editing, broadcast, DSP, or Datacomm preferred. Stock and profit sharing standard. Send resume to Staffing, C-Cube Microsystems, One Water St., White Plains, NY 10603. Fax: (914) 761-5402. E-Mail: aw@c-cube.com

**Motion Picture Printers.** Experienced on wet gate Bell and Howell panels, 16mm and 35mm "C" machines. Contact Tony Landano, Magno/Lab Link, Inc., 115 W. 45th St., New York, NY 10036, (212) 302-7373. Fax: (212) 719-1867.

**Project Manager.** To perform necessary research to evaluate a project's financial and technical feasibility; plan and supervise project; and assume responsibility for technical, financial, and scheduling objectives. Knowledge of electronics from basic to

advanced and of mechanical engineering preferred. B.S. in Electronic Engineering required. Send resume and salary requirement to CBS, Placement Office, 7800 Beverly Blvd., Los Angeles, CA 90036. EOE.

**Night Engineer.** With minimum 5 years experience with D-1, D-2, Digi-Beta. Familiarity with post-production, film-to-tape, and Rank a plus but not necessary. Send resume and salary requirement to C. J. Roback, The Tape House Editorial, 216 E. 45th St., New York, NY 10017. (212) 557-4949, ext. 258. Fax: (212) 983-4083.

**Inside Sales Engineer — Broadcast Television Equipment.** Leading manufacturer of broadcast television equipment has immediate opening for candidate with strong customer service skills, solid background in electronics, and experience in the broadcast television industry to serve as the primary interface between the company and its customers. Mail resume to Leitch Inc., 920 Corporate Lane, Chesapeake, VA 23320, Attn: Human Resources Manager. Fax: (804) 548-0247.

**Staff Engineer.** Post-production facility seeks maintenance engineer with knowledge of electronics, mechanical dexterity, and self-motivation. Knowledge of computer systems a plus. Salary commensurate with experience. Contact Tom Saylor, Empire Video, 216 E. 45th St., New York, NY 10017. (212) 687-2060. Fax: (212) 682-1138.

**Systems Engineer.** With 8 years experience in telecommunications network systems for secure TV and/or computer systems. Must have BSEE or related technical degree. Merdan Group, Inc., San Diego, Calif. Contact Dennis Bartlett, (800) 608-6029. E-mail: bartlett@merdan.com.

**Video Engineer.** Responsible for system-level engineering design, technical problem solving, and maintenance of equipment and facilities within art school environment. Minimum 3 years experience preferred with digital and analog video and audio production and post-production equipment as well as PC and Macintosh computers. Send resume to Rachelle Katz, School of Film/Video, California Institute of the Arts, 24700 McBean Pkwy., Santa Clarita, CA 91355. E-mail: rkatz@muse.calarts.edu.

### Position Wanted

**Audio Engineer.** Experience includes broadcast audio for television as well as in the recording studio. Recently engineer for Q2 Television. Mixed music, live musical guests, special effects "on the fly." Expert at MIDI programming and miking techniques for any audio situation. Contact Kenneth Swartz, 33-52 85th St., #504, Jackson Heights, NY 11372. (718) 424-7451.

# Society of Motion Picture and Television Engineers

## The Newest SMPTE Publications

### Standards for Advanced Television and High-Definition Production with Supplemental Standards Including Ancillary Data

An important function of the SMPTE is to provide the industry with engineering documentation reflecting the significant changes taking place.

A 188-page volume of standards for advanced television and high-definition production parameters with supplemental standards including AES/EBU Audio and Auxiliary Data is now available from the Society.

The series of 13 documents includes:

- Section 1: 1125/60 and digital representation, 1920 x 1080 both 60 and 50 Hz, 720 x 483 active line with digital representation, 1280 x 720 scanning and interface.
- Section 2: (Supplemental) Ancillary Data and Space Formatting, AES/EBU Audio and Auxiliary data, 10-Bit 4:2:2 Component, and ITU 601-4 Encoding Parameters.

If purchased individually, these documents would cost \$220. Here they are available for only \$55 for SMPTE members and \$65 for nonmembers.

- Published 1996
- 188 pp., 8 1/2 x 11, Softbound
- ISBN 0-940690-29-2

### The Convergence Continues . . . Computer Technology and Television: The Proceedings of the 1996 SMPTE Advanced Motion Imaging Conference

Contains the available papers from SMPTE's 30th Advanced Motion Imaging Conference (Seattle, Wash., February 1-3, 1996.) The broad topics are Storage, Generation and Authoring Tools, Delivery and Distribution, and Presentation and Display.

- Published 1996
- 210 pp., 5 1/2 x 8 1/2, Softbound
- Member Price: \$20  
Nonmember Price: \$25
- ISBN 0-940690-28-4

### For Easy Ordering . . .

A complete list of the publications available from the Society can now be accessed via the Internet, with an order form that allows you to e-mail your order directly to Headquarters. SMPTE's site on the World Wide Web is located at <http://www.smpte.org/>

**SMPTE Books**  
595 W. Hartsdale Ave.  
White Plains, NY 10607



- Please send me \_\_\_\_\_ copies of **Standards for Advanced Television and High-Definition Production with Supplemental Standards Including Ancillary Data** at the price of \$65 each (\$55 for SMPTE members) plus postage and handling.\*
- Please send me \_\_\_\_\_ copies of **The Convergence Continues...Computer Technology and Television: The Proceedings of the 1996 SMPTE Advanced Motion Imaging Conference** at the price of \$25 each (\$20 for SMPTE members) plus postage and handling.\*

Enclosed is my check for \$ \_\_\_\_\_.

Charge to my (check one) \_\_\_\_\_ Visa \_\_\_\_\_ MasterCard \_\_\_\_\_ American Express

Card No. \_\_\_\_\_ Expiration Date \_\_\_\_\_

Name \_\_\_\_\_ Company \_\_\_\_\_

Address \_\_\_\_\_

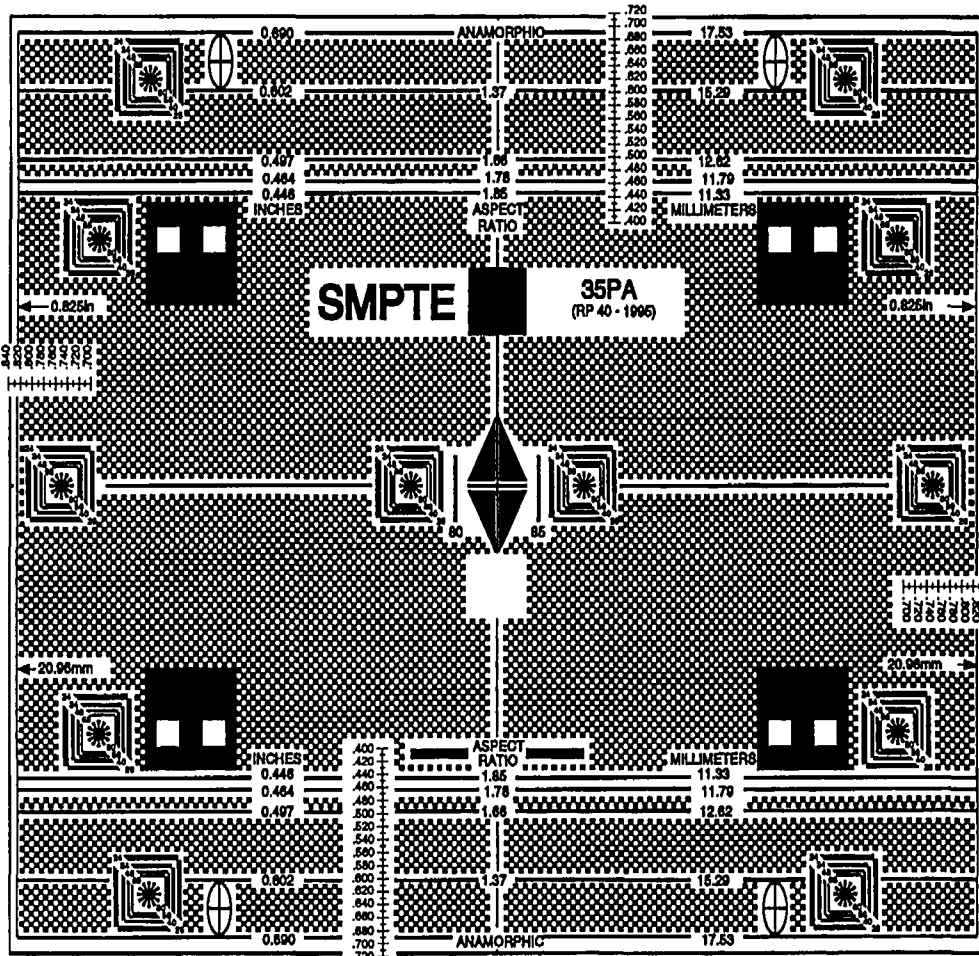
City \_\_\_\_\_ State \_\_\_\_\_ Zip \_\_\_\_\_

\*Postage and handling: USA: \$4.00 per book; Canada and Mexico: \$5.00 per book; outside USA, Canada and Mexico: \$10.00 per book.



# SMPTE RP 40-1995

## New, Improved Projector Alignment Test Film



- 35-PA-50 (50 ft) or 35-PA-200 (200 ft)
- Resolution targets to 85 lines/millimeter
- Vertical and horizontal calibration scales for custom dimensions — inches and millimeters
- Four additional resolution targets for corners of 1.66:1, 1.78:1 and 1.85:1 aspect ratios
- CinemaScope/anamorphic alignment targets
- Travel ghost alignment targets

**SMPTE Test Materials Dept., 595 W. Hartsdale Ave., White Plains, NY 10607**

Please send me \_\_\_\_\_ copies of **35-PA 200 ft @ \$430 \*** and/or \_\_\_\_\_ copies of **35-PA 50 ft @ \$148 \***

Enclosed is my check for \$ \_\_\_\_\_. Charge to my (check one)  Visa  MasterCard  AMEX

Card No. \_\_\_\_\_ Expiration Date \_\_\_\_\_

Name \_\_\_\_\_ Company \_\_\_\_\_

Address \_\_\_\_\_

City \_\_\_\_\_ State \_\_\_\_\_ Zip \_\_\_\_\_

*\* Shipping charges vary with location of destination.  
Please call the SMPTE Test Materials Dept. for shipping charges prior to completing orders.*