

Professional Services

BARANTI
 electronic product development

electronic engineering • embedded software
 circuit board layout • contract manufacturing
 Digital video, audio & automation specialists

Tel: (905) 479-0148
 Fax: (905) 479-0149

Professional Engineers
 Ontario

BROOKS/FLEMMING ASSOCIATES
 TELEVISION CONSULTANTS

SYSTEMS DESIGN
 PROPOSAL ANALYSES
 PROJECT MANAGEMENT

1918 W. Magnolia Blvd. #203, Burbank, CA 91506
 818-556-3610 / Fax 818-556-1517

Self-Normalling
MACHINE CONTROL PATCHING

dPatch Jem-Fab Corporation
 MACHINE CONTROL PATCHING SYSTEM 1 (919) 435.6179

MOTION PICTURE PROCESSORS

ALLEN PRODUCTS
 180 Wampus Lane
 Milford, Ct. 06460

Tel: 203 878 7454
 Fax: 2038776346

REELS • CANS • FIBER CASES

MOTION PICTURE ENTERPRISES, INC.

Tarrytown, N.Y. 10591
 N.Y.C. Tel: 212-245-0969

World's Premier Supplier and
 Integrator of Motion Picture
 Film Processing Systems

Lipsner & Smith 847-677-3000
 MOTION PICTURE EQUIPMENT COMPANY E-Mail: sales@lipsner.com
 Web: www.lipsner.com

DISASTER RECOVERY

VIDEOTAPE

- Decontamination
- Restoration
- Archival Rejuvenation
- Disaster Planning

800-852-7732

SPECS BROS

FIRE FLOOD DECAT

www.specsbros.com

DSC

Image Control
 yours for the asking
 with Ambi/Combi

DSC Laboratories
 Tel: 905 673 3211 www.dsclabs.com

Broadcast Products

- Free Catalog
- On-Line Ordering

@ www.bi-tronics.com

BI-TRONICS
 Hawthorne, NY 10532
 800.666.0996 • Fax: 800.569.4244 • Info@bi-ironics.com

Kings EDAC Hirose Neutrik Kramer Mogami CommScope

SALES/SERVICE/RENTAL

Servicing All Major Motion Picture Equipment
 30 Years Experience
 Buy/Sell/Trade Used Equipment

SMS PRODUCTIONS, INC.
 1327 W. Washington Blvd., Suite 103
 Chicago, IL 60607
 312-738-0747 Fax: 312-738-0564

WORRALL GRINDING CO.

CUSTOM
 FILM SPROCKETS
 HELICAL & SPUR GEARS

GEORGE H. WORRALL
 1639 South St., Anderson, CA 96007
 (530) 365-4565 FAX: (530) 365-9560

HOROWITZ
 TELEVISION TECHNOLOGY

Television Equipment
 and Systems Consulting

387 Ramsey Road, Yardley, PA 19067-4645
 Phone: 215-493-9263 ■ Fax: 215-493-9269
 Email: d.horowitz@ieee.org

HOLLYWOOD VAULTS

Preservation-quality storage
 of film, tape & digital media

800/569-5336
 www.hollywoodvaults.com

QUALITY LENS SERVICE

Fujinon • Canon • Angenieux • Zeiss •
 Cooke • Schneider • Etc.

Now Available From:
WHITEHOUSE AUDIO VISUAL
 2696 Lavery Court #8, Newbury Park, CA 91320
 Tel: (805) 498-4177 • Fax: (805) 499-7947

VIDEO & AUDIOTAPE RESTORATION

VidiPax

- Obsolete Formats including 2" Quads & 1/2" Open Reel.
- Smoke & Water Damage
- Deteriorating, Neglected, & Aging Magnetic Tape

800-653-8434

AMERICA'S PREMIER BOLEX DEALER

COMPLETE SALES AND SERVICE
 CALL OR WRITE FOR FREE CATALOG
 706-636-5210

CHAMBLESS
 CINE EQUIPMENT

ROUTE 1, BOX 1595, HWY. 52 W
 ELLIJAY, GA 30540 U.S.A.

MOTION PICTURE SYSTEMS

STEVEN H. KRAMS
 Consultant

100 Northeast 39th Street
 Miami, Florida 33137-3632
 (305) 573-7339/Fax: (305) 573-8101

MEXICO CITY

LABOFILMS, S.A.

Motion Pictures Processing 35 M/M prints. Good Service, great QUALITY. Send your negatives to our laboratories.

Toll Free Tels. 544 0466 y 544 6353 Fax 544 2457
 E-mail labofilm@supernet.com.mx

DISK DRIVES for Ampex, Quantel, Adda, Abekas, Harris IRIS, DFX, Vidifont, etc.

Drive replacements and upgrades for Fujitsu, CCD, Hitachi, Toshiba, SME & SMDE drives.

- Plug-compatible • Multiple Volumes
- More Storage • Jaz Backup & Archive

ARRAID, Inc., PHOENIX, AZ INFO@ARRAID.COM
 605-582-4592 FAX 602-582-4321 W WWW.ARRAID.COM

OPTICAL RECORDING

WESTREX LIGHT VALVE REPAIR/MODIFICATION
 NUOPTIX STEREO/MONO ELECTRONICS
 NEW OPTICAL RECORDERS

SIMON DANIEL SOUND

5757 Stonecrest Dr., Agoura Hills, CA 91301
 (818) 991-4114 — FAX (818) 991-7697

BUSINESS DEVELOPMENT CONSULTING FOR EQUIPMENT MANUFACTURERS

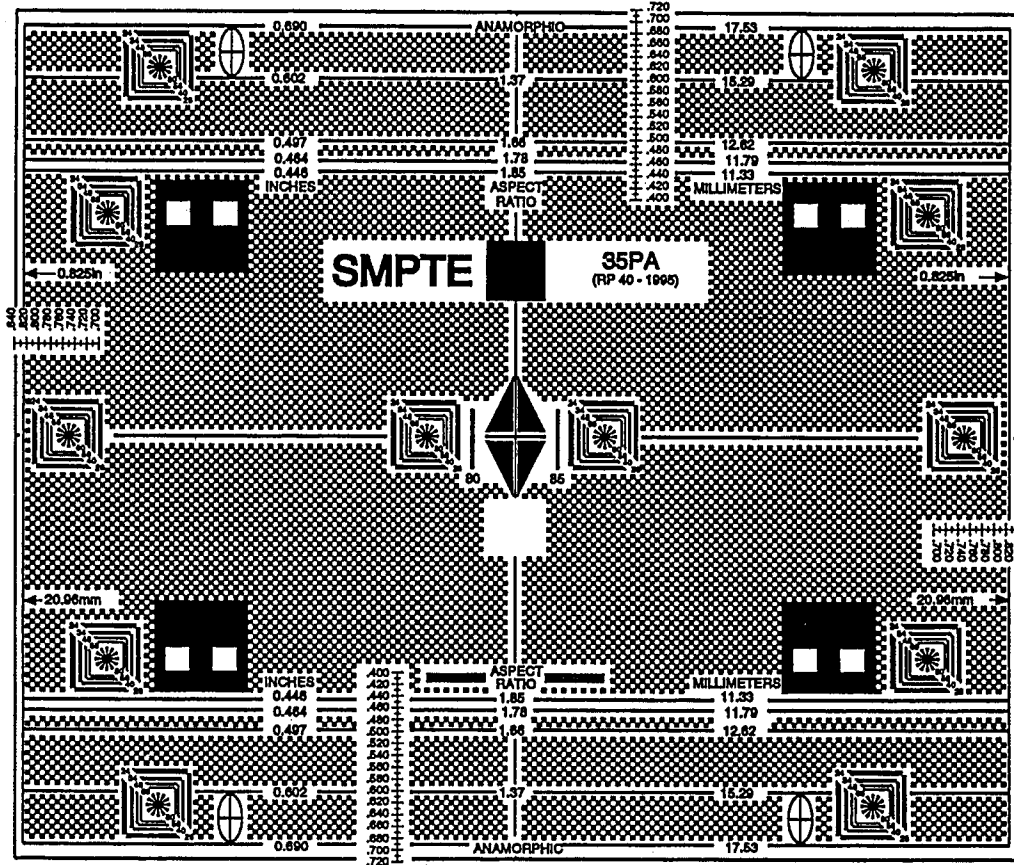
strategic writing
 distribution expansion • market research • partnering

Douglas I. Sheer — DIS Consulting Corporation
 10 Waterside Plaza # 33D • New York, NY 10010-2608 USA
 Tel: (212) 213-6872 • Fax: (212) 213-6876 • Email:doug@sheer@aol.com
 more than 150 clients served since 1982



SMPTE RP 40-1995

New, Improved Projection Alignment Test Film



- 35-PA-50 (50 ft) or 35-PA-200 (200 ft)
- Resolution targets to 85 lines/millimeter
- Vertical and horizontal calibration scales for custom dimensions — inches and millimeters
- Four additional resolution targets for corners of 1.66:1, 1.78:1 and 1.85:1 aspect ratios
- CinemaScope/anamorphic alignment targets
- Travel ghost alignment targets

SMPTE Test Materials Dept., 595 W. Hartsdale Ave., White Plains, NY 10607

Please send me _____ copies of 35-PA 200 ft @ \$495* and/or _____ copies of 35-PA 50 ft @ \$170*

Enclosed is my check for \$ _____. Charge to my (check one) Visa MasterCard AMEX

Card No. _____ Expiration Date _____

Name _____ Company _____

Address _____

City _____ State _____ Zip _____

* Shipping charges vary with location of destination.
Please call the SMPTE Test Materials Dept. for shipping charges prior to completing orders.