

New Products

Encoders

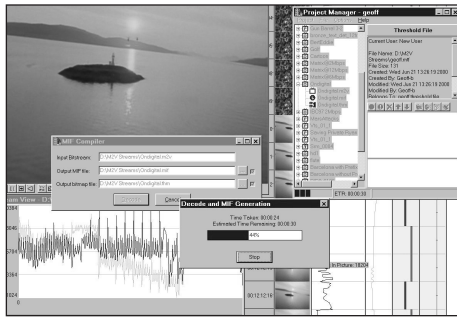
Zapex has introduced the **ZP-330 and 230**, a new series of broadcast-level MPEG-2 video and audio encoders that run on Windows NT, offering increased functionality that includes program stream for broadband and streaming applications and transport stream for broadcast and cable applications. On-board transport stream multiplexers in the ZP-330 and 230 make it possible to feed encoder output into a DVB card, providing a complete digital solution in a single PC computer. Utilizing automatic scene-change detection, both encoders can detect subtle changes in the video, eliminating block artifacts. In addition, the ZP-330 can simultaneously encode video and Dolby Digital audio.

LCD Display

Dimension Technologies Inc. has introduced the **2015XLS 3-D** LCD display. It features a 15-in. TFT LCD screen and user-selectable stereo formats for compatibility with most stereo sources, 1024 x 768 resolution; 16.7 million display colors; analog RGB input; conventional 2-D display at the push of a button; and a compact, space-saving design.

Lens

Angenieux has announced the **Extreme Tele Zoom** lens for field broadcast and production applications. The 40 x 11 lens features the longest focal length available with low ramping: F440 mm (1°) at f/4 and F880 mm (1/2°) with 2X extender. Digital performance features include a wide variety of zoom modes and focus servo controls; iris priority that stops the zoom range when the lens starts to ramp; an anti-breathing mode to keep constant field of view when focusing; an RS-232 serial interface for digital remote control; and autocruise to zoom at a consistent speed. Additional features include an internal focus mechanism protected from dust; a standard UV filter; double engravings on the focus ring; compact styling; and lightweight design.



The Mosalina software package from Snell & Wilcox.

MPEG Software

Snell & Wilcox has introduced **Mosalina**, a revolutionary software package for MPEG file analysis. Running on Windows '95, '98, or NT computers, Mosalina works faster than realtime to analyze standard-definition MPEG video. (High definition video analysis is also available.) The software is available in basic, advanced, and expert versions. It provides automated quality assurance during all phases of video production, including creative DVD authoring, streaming, post-production, broadcast, and archiving. It uses a picture quality measure called PAR (Picture Appraisal Rating), which is a single-ended system that monitors artifacts produced by MPEG compression systems.

Power Distribution System

Pulizzi Engineering, Inc., has released the **TPC 2562** series of AC power distribution. The series accepts two AC power inputs, 120VAC or 240VAC (16A) and protects against a power failure or severe brownout condition. It monitors the input voltage and switches to the secondary power source when the primary source fails and returns to the primary source when it is back on

line. The high-speed transfer rate ensures that the transfer is transparent to sensitive electronic equipment. Testing has repetitively produced 18 ms +/- 5 ms source-to-source transfer time. Power input is available via two IEC 60320, C20 power inlets located on the rear (power cables are available separately). Both power inlets have integrated EMI/RFI protection, allowing any noise to be isolated before it enters the TPC 2562. Both power inputs are protected with inline fuses and surge suppression for additional protection. The Pulizzi patented circuitry monitors both AC power inputs and removes either source if an under-voltage or loss of power occurs. It has factory set dropout of 92.5VAC and a pull-in of 100VAC. The TPC 2562-240 (240V/1 6A) has a dropout of 185VAC and a pull-in of 200VAC. Other pull-in/dropout levels can be set at the factory. If both power sources are good, the unit defaults to the primary source.

Angenieux Division, Thomson Components and Tubes Corp., 40G Commerce Way, P.O. Box 540, Totowa, NJ 07511; tel: (973) 812-3858 ext. 4346; fax: (973) 812-9050; e-mail: angenieux@tctus.com; website: www.angenieux.com

Dimension Technologies Inc., 315 Mt. Read Blvd., Rochester, NY 14611; tel: (716) 436-3530; fax: (716) 436-3280; website: www.dti3d.com

Pulizzi Engineering Inc., 3200 S. Susan St., Santa Ana, CA 92704; tel: (714) 540-4229; fax: (714) 641-9062; e-mail: sales@pulizzi.com; website: www.pulizzi.com

Snell & Wilcox, 2225-I Martin Ave., Santa Clara, CA 95050; tel: (408) 260-1000; fax: (408) 260-2800; e-mail: john.shike@snellamerica.com; website: www.snellwilcox.com

Zapex Technologies, Inc., 2432 Charleston Rd., Mountain View, CA 94043; tel: (650) 930-1300; fax: (650) 930-1399; website: www.zapex.net



Pulizzi's dual input auto-switching power controller.