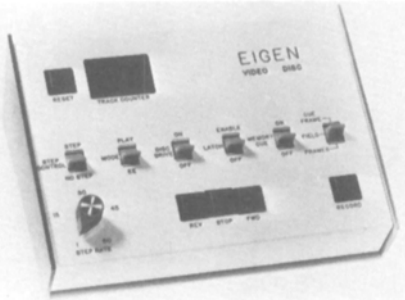


New Products & Developments

Further information about these items can be obtained direct from the addresses given. As in the case of technical papers, the Society is not responsible for manufacturers' statements, and publication of these items does not constitute endorsement of the products or services.



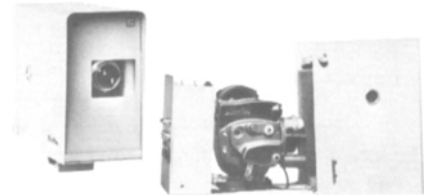
A color slow-motion disc recorder, Model 12, offering switch-selectable field or frame operation, has been announced by Eigen Video, P.O. Box 1027, Grass Valley, CA 95945. Model 12 can be used for freeze-frame, broadcast slow-motion or post production. The flexible discs record consecutive fields as alternate tracks in

each direction to achieve continuous loop operation. Each track is erased before re-recording by dual-gap magnetic heads. The disc is in a cassette that can be changed in seconds without tools. The recorder is equipped with memory cue capability enabling the operator to select the desired field (or frame) for freezing. The disc recorder can respond to a start command from automatic editing equipment, running to the exact field or frame and freezing. Price of Model 12 is \$15,000.

The Adwar Portable Switcher-Fader, designed to enable a single video cameraman with one portable recorder to switch and dissolve between two portable video cameras to superimpose their images and to fade up from — or down to — black, has been announced by Adwar Video Corp., 100 Fifth Ave., New York, NY 10011. The switcher-fader weighs 2 lb and can be carried on the cameraman's belt for handy control. It can be run by battery or by ac charger power from the recording deck. A processing amplifier is built in to eliminate flashing, level jumps and side-to-side tearing. The cameras can be of different makes and may operate up to 100 ft apart. All signals can travel through the 10-pin camera

cable without additional connections. The master viewfinder can preview either camera image. When recording, it monitors the full program with all switches and effects. Both cameras monitor the playback of the recorded tape. The Adwar Portable Switcher-Fader is available in monochrome for \$495.

Options include color, a genlock for combining VTR playback with camera images, and provision for intercom. For use with regular studio equipment, a studio camera junction box, a non-portable recording deck adapter, and monitor jacks for each camera and deck.

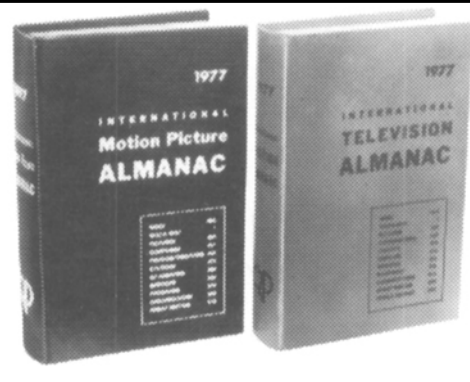


The Beaulieu 16mm surveillance camera system has been announced by Hervic Corp., 14225 Ventura Blvd., Sherman Oaks, CA 91423. The basic component of the system is a Beaulieu R16B camera equipped with an Angenieux 10mm f/1.8 lens. Filming speeds range from 3 frames/s to one frame every three minutes. When set at the lowest filming speed the camera will switch to 3 frames/s when a general alarm is set off or when the unit is triggered by a foot pedal. The diaphragm instantaneously adapts to the slightest change in light intensity. The camera accepts standard 16mm films including high-speed black-and-white films. Price of the 16mm surveillance camera is \$3175.85 with an

Motion Picture ALMANAC

NEW

Up-dated Drive-In listing complete with owners and mailing addresses



TELEVISION ALMANAC

NEW

Revised commercial TV stations section plus complete list of PBS affiliates

ONLY THESE BOOKS... *the two most recognized reference directories put the business worlds of Motion Pictures and Television - their people, companies, products and services - at your finger tips!*

**REVISED-
UPDATED**

**48th Edition
Motion Picture ALMANAC \$25**

**22nd Edition
TELEVISION ALMANAC \$25**

**Companion Set
BOTH ALMANACS \$40**

Publication: January 1977

QUIGLEY PUBLISHING CO., INC. Box 1535 Radio City Station, New York, N.Y. 10019

Please send me 1977 copies of:

- Motion Picture Almanacs at \$25 per copy
- Television Almanacs at \$25 per copy
- Companion Sets of 2 Almanacs at \$40 per set

N.Y. residents add sales tax:
1 Almanac \$2.00 2 Almanacs \$3.20

Name _____

Address _____

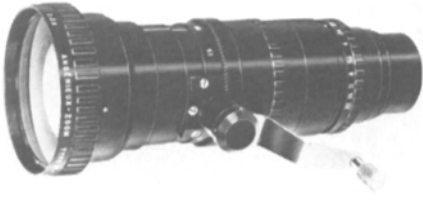
City _____

State _____ Zip _____

Payment Enclosed \$ _____

YOUR PAYMENT MUST ACCOMPANY THIS ORDER

Angenieux 10mm lens. The camera can also accommodate an Angenieux 25mm $f/1.4$ or an Angenieux 50mm, $f/2.5$ lens.



The Angenieux 10 × 12B, 12-120mm zoom lens for 16mm reflex cameras has been revised to a higher aperture, it was announced by Angenieux Corp. of America, 1500 Ocean Ave., Bohemia, NY 11716. The new lens retains the focal length of 12-120mm but the geometric aperture of $f/2.2$ has been changed to $f/2$, an increase of 20%. Retaining the weight of 1.14 oz (860 g), the new 10 × 12 is also identical in size to the $f/2.2$ type — maximum overall diameter 3 in (75 mm) and total overall length from the front of the lens to the image plane is 7.5 in (195.62 mm). Price of the new lens is \$2775.



A range of high-fidelity monitor units designed for use with magnetic and optical audio recorders has been announced by Transound, Highcroft, Tewin Close, Tewin, Welwyn, Hertfordshire, AL6 0HF, England. The units are available with either headphones or loud-speaker or both outputs at option. All units supply switched line-up and frequency response tones and have a VU meter fitted for checks. They are designed to fit into specific equipments or as free-standing entities. The 4-track unit (shown above) is priced at \$380.

The IDI MiniPod designed to fit any handheld, shoulder-mounted film or electronic camera has been announced by Image Devices Inc., 1825 NE 149 St., P.O. Box 61-0606, Miami, FL 33181. Constructed of uni-welded stainless steel,



But not without functional rollers, bushings and bearings in your processing equipment.

When replacement parts are needed, come to PRC of America. We're the primary source for all types of idler/drive rollers, including high-tensile polypropylene, tough ABS and super-tough polycarbonate. And, we have all the latest in linear polyethylene bushings, bearings and spring bushings. If it's not in stock, we'll make it for you!

Of course, they're all made the Plio-Magic® way: to the most exacting tolerances, at the most reasonable prices. And shipped immediately, so you can be sure of prompt delivery.

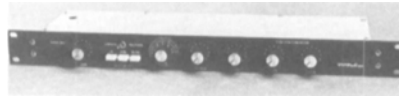
Write for our price list/data sheets today. And don't worry about downtime on your processor tomorrow.



PLIO-MAGIC
PRC of AMERICA
 Plastic Reel Corporation of America
 A wholly owned subsidiary of Williamhouse-Regency, Inc.
 640 South Commercial Avenue, Carlstadt, N.J. 07072 (201) 933-9125
 7165 Willoughby Avenue, Hollywood, CA 90046 (213) 851-7532
 1234 Roundtable Drive, Dallas, TX 75247 (214) 634-7774
 Available in Canada through Rutherford Photo Ltd.

the unit has an angled rubber shoulder cushion and is adjustable for individual fit. A dovetailed acceptance plate takes a Cine 60 or CP snap-lock base plate. Price of the IDI MiniPod is \$49.95.

A Canadian-made case specially designed to hold the Eclair ACL with zoom lens, three 400-ft magazines and batteries or battery belt and accessories has been announced by W. Carson Co. Ltd., 31 Scarsdale Rd., Don Mills, Ont., Can. M3B 2R2. The locking case (green fiberglass, plywood body, aluminum frame) has three handles. It is light in weight but has been designed to resist the general hazards of transportation. All compartments are padded with foam to insulate it from shock. The price is \$275.



The Time Warp, an audio delay unit and sound effects generator, has been announced by Mic-Mix Audio Products, 9990 Monroe Dr., Suite 222, Dallas, TX 75220. The unit incorporates a special design analog delay to provide up to 100 ms of continuously variable delay in three selectable ranges of 1.5 to 6; 6 to 25; and 25 to 100 ms over a usable frequency range of 20 Hz to 10 kHz. In addition to basic delay, the Time Warp (TW-1) can produce a number of sound effects including vibrato with control of both rate and depth of deviation using its internal function generator. An external ramp input can provide pitch change. Other sound effects of which the generator is capable include polytone and recy-

cling capability with continuously variable control from zero to oscillation in all time ranges for slap-back echo and reverberation effects. A mix control provides mix of the delayed and direct signals. Complete in a standard 1 3/4-in rack panel the TW-1 has XLR type connectors and can operate with input signals from -dBm to +20 dBm and has an 80 dB dynamic range. The price is \$1195.

Introducing the perfect go-togethers for Cine/ENG



HERCULES HYDRO

Weight: 8.5 lbs. (3.9 kg.)
Wt. capacity: 50 lbs. (22.7 kg.)
Dimensions: 6" x 5" x 6" (cm.: 15.2 x 12.7 x 15.2)
Tilt: ±80°
Pan: 360°
Code No. 4-52810-3

HERCULES HYDRO fluid head designed specifically for Cine/ENG cameras to 50 lbs. (22.7 kg.). Provides effortless, smooth pan and tilt movements. Spring-loaded to counterbalance uneven weight. Independent pan, tilt tension and

lock controls, for pro-level performance. Telescoping control handle, standard. Dual handle operation, too.

SAMSON Cine/ENG tripod designed for use with fluid heads. Made completely of aluminum. Lightweight, extremely rigid, completely adjustable. Features Pro Jr. mounting base, quick head connect/disconnect, telescoping legs. Can use any of QUICK-SET's four fluid heads.

Send for complete details!

Ideal combination of lightweight, high capacity, portability.

SAMSON Cine/ENG

Weight: 9 lbs. (4.1 kg.)
Wt. capacity: 70 lbs. (31.8 kg.)
Max. ht.: 58" (147.3 cm.)
Min. ht.: 32" (81.3 cm.)
Code No. 4-70150-4



A new **Porta-Brace**, the PB-4400 with wheelbase WB-2, designed to carry and transport the new JVC 3/4-in portable videocassette recording systems, has been announced by K and H Products, Ltd., Box 246, North Bennington, VT 05257. A modular carrying system, the PB-4400 includes two padded, canvas-type nylon cases, one for the JVC CR-4400U portable videocassette recorder and the other for the JVC CC-4800U camera control unit. The two cases are designed to permit over-the-shoulder use, or they may be attached directly to the patented Porta-Brace frame to create a one-man, balanced, hands-free means of operating all three components of the JVC system. The frame when used with its wheelbase becomes a rolling vehicle. Price of the PB-4400 with wheelbase WB-2 is \$300. Without the wheelbase but including the padded cases, the camera arm and a special waistbelt, the price is \$250.



A portable flatbed film editor weighing less than 35 lb has been announced by Cinematics Inc., Box 16045, Baltimore, MD 21218. The basic four-plate chassis accepts modular super-8 or 16mm picture and sound heads in any combination. A single lever controls all film motion in forward and reverse at sound speed and high speed with instant stop from any speed. The two film strands are mechanically interlocked via



instrument-positioning equipment

3650 Woodhead Drive, Northbrook, Ill. 60062
Phone: (312) 498-0700
Telex: 72-4362

individually switch-selectable electromagnetic clutches; they may be hand inched individually or interlocked. Each strand has its own footage/frame counter. The audio system features two separately controlled input channels for playback from fullcoat or striped magnetic film. A headphone jack is provided.

The rear-projected picture is $4 \times 5\frac{1}{2}$ in for 16mm and features a low-flicker 12-sided polygon prism optical system. The super-8 picture is 3×4 . In either size film may be front-projected on a wall screen by removing the rear-screen housing. Base price for the super-8 machine is about \$2200; for the 16mm machines, about \$2800.



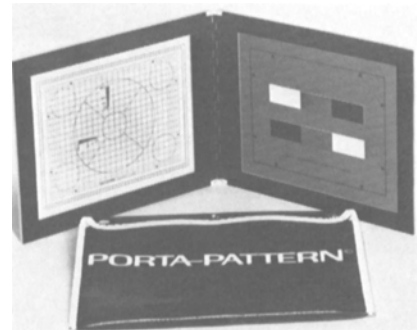
The ATR-700, a new audio recorder designed to provide expanded production capabilities to professional users at radio and television stations and institutions has been announced by Ampex Corp., 401 Broadway, Redwood City, CA 94063. Features include variable speed, 10½-in reel capability, full remote controls and a built-in 4×2 mixer. The recorder has a 3-motor tape drive system with a capstan servo dc motor to provide greater torque with improved operational control and speed accuracy. The system offers three record/reproduce formats--full track (one channel); 2-track (two channels) and ¼-track (two channels) for greater versatility. Three reel sizes — 10½-in, 7-in and 5-in can be used with the ATR-700 and the front panel reel selector adjusts tension for both large and small reels. Every unit is wired for two-channel operation, including electronics. The system can be upgraded from one-channel to two-channel capability by plugging in the appropriate heads. The machine is available in two speed pairs — $3\frac{3}{4}$ - $7\frac{1}{2}$ and $7\frac{1}{2}$ -15 in/s. Flexibility is increased with a built-in speed control. The ATR-700 is priced at \$1695. Options include a portable case and transport remote control.

Scotch brand 67, a general purpose splicing tape designed especially for manual professional splicing of magnetic tapes, has been announced by 3M Company, P.O. Box 33600, St. Paul, MN 55133. Splice bonds are said to remain intact under environmental conditions ranging from -30°F (-34°C) to 150°F (65°C) and at 80°F (26°C) with 80% relative humidity. The splices are removable as required in bin loop applications. The tape is available in widths ranging from $\frac{7}{32}$ to 1 in. Price for a 100-ft roll in the $\frac{7}{32}$ width is \$2.65.

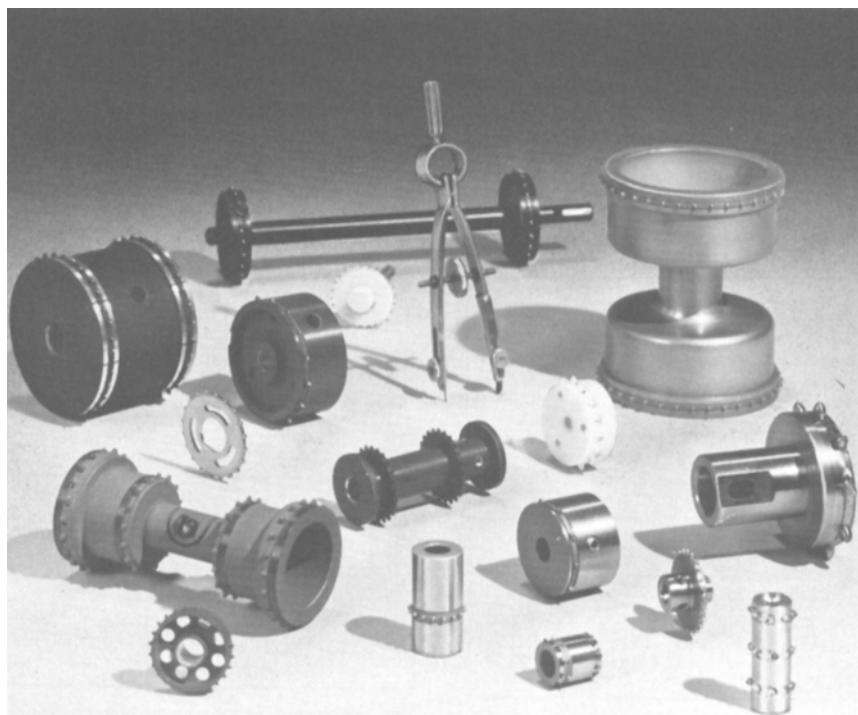


A new Hervic/Minette Tape Splicer for either super-8 or 8mm films has been announced by Hervic Corp., 14225 Ventura Blvd. The splicing tape used with the new splicer is affixed to a special paper surface from which the tape is transferred during the final steps of making the splice. The splicer allows for a 1 mm "clearing"

on the recorded side of the film so that the soundtrack cannot be affected or damaged. The splicer is priced at \$10.70.



The Porta-Pattern ENG two-chart set designed to improve color balance and registration of ENG and EFP portable cameras has been an-



LA VEZZI SPROCKETS FIT THE SHAPE OF YOUR DRIVE IDEAS

When a requirement calls for moving perforated film, tape or charts, LaVeZZi sprockets are specified where precise control of media movement is important.

There are good reasons for it! LaVeZZi sprockets are designed for accurate and dependable operation. For example: Minute details are strictly observed in tooth-to-tooth accuracy. Each sprocket tooth is precision formed, exactly

sized and freed of all burrs to maintain media integrity. The diameter is cylindrically ground for good concentricity and abrasion-free contact with the perforated media.

Compare the reliability and accuracy of LaVeZZi sprockets. They give drive designs an extra measure of confidence.

Our catalog tells all. Ask for it, or send us your specifications.



LaVeZZi machine works, inc.

900 N. Larch Ave. • Elmhurst, Ill. 60126 • (312) 832-8990

Professional Services

TIME LAPSE--HIGH SPEED SCIENCE MOTION PICTURES

Bacteriology, chemistry, scientific special effects applied to motion pictures and TV
Consultation and production since 1929
LESTER V. BERGMAN AND ASSOCIATES, INC.
East Mountain Rd. S., Cold Spring, N.Y. 10516, (914) 265-3656

FRANK P. HERRNFELD

Engineering Consultant
299 East Elfin Green
Port Hueneme, Calif. 93041
Tel. 805-487-9762

HERMAN GALLI CAMERA SERVICE

Expert repair and service on all professional movie and still cameras and accessories
ARRIFLEX, ECLAIR, ZOOM LENSES modifications, custom design
6804 Melrose Ave., Los Angeles, Calif. 90038
Phone 213-931-4111

RENT

16mm, 25mm Motion Picture Cameras
High Speed Cameras
Special Cameras
Lenses Lights
Sound Equipment
Editing Equipment
ALAN GORDON ENTERPRISES INC.
1430 N. Cahuenga Blvd., Hollywood, CA. 90028
(213) 985-5500 (213) 466-3561

THE CAMERA DOCTOR

Repairs
Arriflex, Eclair, Mitchell, Auricon, etc.
Phone or write The Camera Doctor at
ALAN GORDON ENTERPRISES INC.
1430 N. Cahuenga Blvd., Hollywood, CA. 90028
(213) 985-5500 or (213) 466-3561

VIDEO

Consultant
Engineering
Sales, Rentals
call or write

Elie C. Katz, Scan-Rate, Ltd.
366 Forest Ave., Paramus, N. J. 07652
NJ 201 265-2623 NY 212 564 7188

MICROSCOPICALLY-PERFECT ULTRASONIC FILM CLEANING WITH NON-EVAPORATIVE DRYING

Ideal for film laboratories, motion picture studios, microfilm laboratories, TV stations, film libraries, media centers.

LIPSNER-SMITH CORPORATION
6110 Madison Court / Morton Grove / IL 60053
312/967-1033

Consulting, Analysis, Research and Development Lockwood Associates

Electro-Optics Analog-Digital Visuals
Cqmmunications Instrumentation
Lawrence W. Lockwood
President
(713) 333-3268
P.O. Box 58095
Houston, Texas 77058

REELS • CANS • FIBER CASES

MOTION PICTURE ENTERPRISES INC.

Tarrytown, N.Y. 10591
N.Y.C. Tel: 212-245-0969

NEW & USED LAB & OPTICAL EFFECTS EQUIPMENT

We make and sell new optical and contact printer accessories, liquid gates, auto focusing devices, photometers, additive color lamphouses. We also sell used printers, Acme cameras, components, etc.

PIONEER MARKETING CORPORATION
1021 N. Lake St., Burbank, CA 91502
(213) 843-0530
Cable Address: PMAGIC

EVERYTHING for the FILM USER!

Film Inspection/Cleaning Equipment
Splicing and Editing Supplies
Storage Racks, Cabinets, Shelves
Reels, Cans, Shipping Containers
RESEARCH TECHNOLOGY INC
8260 Elmwood / Skokie / IL 60076
800/323-7520; 312/677-3000

SABA CAMERA SERVICE

ECLAIR AND ARRIFLEX
Motors, Lenses, Etc.
FACTORY TRAINED BY ECLAIR
(213) 469-1551
6572 Santa Monica Blvd.
Hollywood, Calif. 90038

PROCESSING MACHINE SQUEEGEE'S

16-35 MM O.S. Self adjusting
blade type Patented. Air-Vac
Pat. Pend. Details available.
Mr. Oldrich Skudrna
20287 Damman Harper Woods
Michigan 48225

LENS REPAIRS

BY THE LENS DOCTOR
KENJI SUEMATSU

CINE AND TV

ANGENIEUX—CANON—NIKON
PROMPT—EFFICIENT—REASONABLE
MOBILE OPTICS—24970 CARNES DR.
ROMOLAND, CALIF. 92380
714 926-2711

TELEVISION AND SOUND (Systems and Equipment)

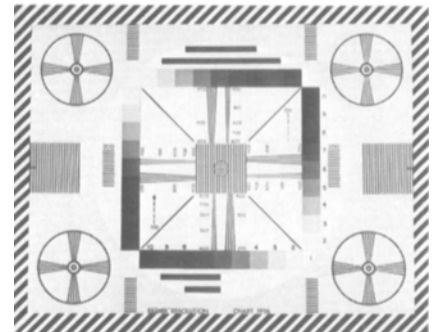
Design-Installation-Maintenance-
Measurements. Completed projects
are available for inspection.

TURNER ENGINEERING
14 Morris Avenue
Mountain Lakes, N.J. 07046
(201) 263-0023

EXPERT-FAST-REASONABLE

Zoom Lens repairs
Also repairs of Arriflex, Canon Scoopic,
Auricon Conversion, Filmos, and Bolex
Filter Slot Filmos
Write for details
Gordon Yoder, Inc.
2840 Reward Lane
Dallas, TX 75220
214 357-3045

nounced by Telecommunications Industries Ltd., 6335 Homewood Ave., Suite 204, Los Angeles, CA 90028. Included in the new system are the standard Porta-Pattern registration chart and a specially designed color balance chart. They are mounted on two hinged, rigid white acrylic plastic sheets that double as a reference surface for automatic color balance. Non-reflective black velcro frames provide a light and dirt seal when the system is closed. The 6.3- X 8.4-in (16.8- X 21.3-cm) registration chart also includes target scan information. The identically sized color balance chart contains logarithmic gray scale information to set black level, gain, gamma and white clip (0% black on a standard 12% background). Price of the Porta-Pattern ENG set is \$125.



A set of Tele-Pat test slides for setting up and adjusting television cameras is available from Tele-Measurements Inc., 145 Main Ave., Clifton, NJ 07014. The slides have been designed to provide all the basic measurement information for consistently meeting performance standards for color and black-and-white TV systems. Among the test patterns included in the set are the color registration slides TM-105 and TM-304; the custom high-resolution patterns TM-116 and TM-316; the linear gray scale slides TM-117 and TM-317; and the color fleshtone patterns TM-202 and TM-402. The 100 and 200 series slides are for use with 2- X 2-in film chains, slide projectors and direct-coupled equipment. The 300 and 400 series cover the 8- X 10-in size used with Tele-Pat test pattern illuminators II-RS and IV-C. Prices for the 2- X 2-in slides range from \$9.90 to \$29.90. Prices for the 8- X 10-in slides range from \$19.90 through \$69.90. The test patterns may also be obtained on 18- X 24-in paper charts for use under normal scene lighting.

A "single-frame" accessory for use with Beaulieu super-8 sound cameras has been announced by Hervic Corp., 14225 Ventura Blvd., Sherman Oaks, CA 91423. The new device can be attached to the camera in minutes and may be activated with any standard cable release to advance super-8 sound or silent cartridges one frame at a time for animation, time and motion studies, time-lapse photography and special effects. The device is priced at \$54.25.

An oscillator and an analyzer designed for use as optical cross-modulation test equipment have been announced by Transound, Highcroft, Tewin Close, Tewin, Welwyn, Hertfordshire AL6 0HF, England. The oscillator supplies carrier frequencies from 4 kHz through 10 kHz in 1 kHz steps modulated by 400 Hz. It provides tone frequencies for line-up from 40 to 10 kHz. The instrument provides 400 and 1 kHz refer-



ence levels (all front panel adjustable) and output level +10 dBm. The analyzer reads cancellation products directly from 25 to 45 dB and with meter readings from -22 to -55 dB. A "slow-fast" meter facility is incorporated. The instrument has a headphone output socket and a pair of high-fidelity headphones are supplied with the instrument. The oscillator is priced at \$395. The analyzer is priced at \$437. Purchased together the two units are priced at \$775.

A new colorizing process by which black-and-white video or TV can be shown in color has been announced by BJA Systems, Inc., 666 Davisville Rd., Willow Grove, PA 19090. The process is accomplished through a combination of electronic color generation, video animation and

artistic skill, the announcement stated. Basically, the BJA artists assign color, based on gray level information found in the black-and-white TV or video signal. As the artists color moving images in the film they animate and coordinate colors to realistically enhance the film or video piece. Using a combination of analog and digital techniques, the operator instructs a particular color signal to appear whenever desired. The result is a color version of previously black-and-white footage presented on videotape or videocassette. The videotape can be transferred to film. BJA Systems provides a colorizing service rather than an equipment system. The cost is related to the length, quality and purpose of the piece. A rough base to estimate from is \$5000 for a half-hour program.

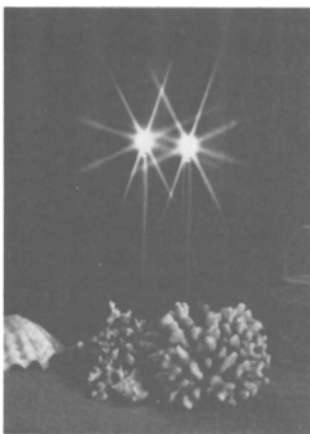
**Audio Cassettes
of the 118th Conference
Technical Papers
can be ordered through
SMPTE Publications Sales**
Please specify 118th Conference; the
paper number, title, and author.
(Refer to Dec. issue.) Checks should
be made payable to SMPTE.

PRICES
*Prepaid (includes postage and
handling)*
Single paper \$6.50
"Labor in a Changing Technology"
Panel Discussion \$10.50
*Not prepaid — There will be an ad-
ditional handling fee.*

Index to Advertisers

Arriflex Co. of America	39
Camera Mart	37
Classified	64
Cinema Products	47
CBS	64
Comprehensive Video Supply Corp.	54
EPOI	45
Filmline Corp.	43
Film 77	53
Frezzolini Electronics Inc.	40, 52
Goldberg Bros.	55
Image Devices, Inc.	56
LaVezi Machine Works, Inc.	61
Lowel Light	42
Magna-Tech Electronic Co., Inc., OBC	
Montreux International	54
Plastic Reel Corp. of America	59
Professional Services	62
Quick-Set, Inc.	60
Quigley Publishing Co.	58
Redlake Corp.	48
Salco West, Inc.	57
Shure Brothers Inc.	41
SMPTE	46, 56
Sony Corp. of America	50, 51
Thomson-CSF	49
Tiffen Manufacturing Co.	63
Western Cine	44

TIFFEN FOR SPECIAL EFFECTS



STAR EFFECT

Highest quality optics to create star burst effect. Use individually or in combination to achieve effect desired. 4-point available in 1mm, 2mm, 3mm grids; 6 and 8-point in 2mm, 3mm and 4mm grids. Supplied in series sizes, direct screw-in rotating mounts, 4½" and 138mm diameter, squares and rectangles.

FOG EFFECT

Natural fog conditions can be simulated by the use of Tiffen Fog Filters #1, #2, #3, #4 and #5. Variations can be created by using combinations of these filters. Density of the fog effect can also be controlled by changes in exposure and development. Supplied in series sizes, direct screw-in sizes, 4½" and 138mm diameter, squares and rectangles.

DOUBLE FOG

Use where there are high lighting contrasts, large images or whenever a greater degree of fog effect is required. A natural illusion of fog is achieved without destroying definition. Overall graying of shadows and dark areas, halation around highlights and fog density may be controlled through lighting and exposure. Six densities available—specify when ordering.

LOW CONTRAST FILTERS

Designed for the cinematographer seeking to effectively desaturate and mute on-screen colors by pre-selected degrees: to soften shadows and to blend make-up in portraits, without altering lighting; indoors or out. TIFFEN LOW CONTRAST FILTERS range in effective degrees from minimal to maximum in filters #¼, ½, 1, 2, 3, 4, 5.

DIFFUSION FILTERS

Supplied in grades 1 through 5. Highest quality optical glass; full edge to edge controlled patterned surface. Complete range of diffusion effects from slight overall image softening to complete diffusion with flaring highlights, misty appearance and the blending of colors. Lighting, subject and background will alter the amount of diffusion. May be used in combination or with other color filters for additional effects. Available in series, direct screw-in, square and rectangular sizes.



SPLIT FIELD LENSES

Breathtaking close-ups . . . with sharp distant detail . . . with Tiffen split field lenses that fit like a filter. Available in +½, 1, 2, 3 diopters in series sizes 6-9, 4½" and 138mm diameter too!

CLOSE-UP LENSES

To extend the close up capabilities of your camera's lens, Tiffen manufactures a range of Close-Up lenses in various diopter capabilities. Range +½, 1, 2, 3. Available in series sizes, direct screw-in sizes, 4½" and 138mm diameter.

TIFFEN

71 Jane Street, Roslyn Heights, N.Y. 11577
(516) 621-2700 Telex 96-7748

SUSTAINING
MEMBER
SMPTE

Member Professional
Motion Picture
Equipment Association
pmpca