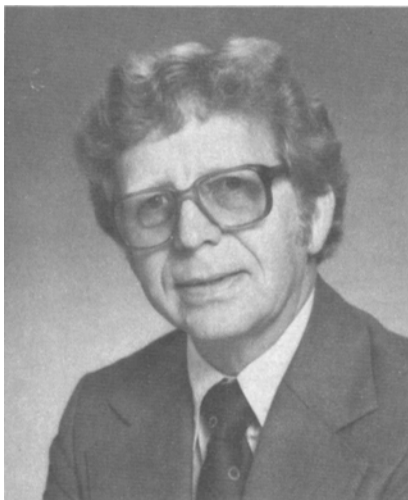


SMPTE Biographical Sketch

M. Carlos Kennedy SMPTE Secretary

1982



M. Carlos Kennedy, who has been a member of SMPTE since 1963 and a Fellow since 1979, is Director, Long Range Planning for the Audio-Video Division of Ampex Corporation. He has the responsibility for developing long-range plans for audio, color cameras, video products and their related accessories. He travels throughout the world to assess product needs. Before being appointed to his present post he was Senior Product Manager for Audio and Helical Video Products for Ampex. Earlier experience with broadcast and industrial television products included ITT and Dage Television, and Dage's successor, Raytheon Corporation, where Kennedy was Vice-President of Engineering. He was graduated from Purdue University in 1952 with the degree of B.S. in Electrical Engineering.

Since Kennedy joined the Society in 1963 he has been active in television standards work. He is currently a member of the SMPTE Committee on Video Recording and Reproducing Technology and the Working Group on Video Test Materials, of which he is Chairman.

Among other contributions he served as Program Co-Chairman for Television at the 123rd Technical Conference in Los Angeles. He was Program Co-Chairman at the 11th Television Conference held in San Francisco in 1977. He was Program Chairman of the 13th Television Conference and General Arrangements Chairman of the 15th Television Conference.

Kennedy was one of the founding members of the Helical Recording Committee and also a member of the

Working Group that produced the Type C Standard.

Earthquakes

Kennedy's job with Ampex requires extensive traveling. He has been around the world three times and has lost count of the number of trips he has made to Japan — more than 60 according to his best recollection. During his first visit to Japan in 1963 the tallest building, then under construction, was 18 stories high. "But now," he said, "Japan, especially Tokyo, is full of skyscrapers."

In Japan, of course, there is an ever-present possibility of an earthquake. Kennedy has experienced several earthquakes during his visits to Japan. "They happen so frequently that they become, in a sense, a way of life," he explained. He told of an unusual happening caused by the earthquakes. "As soon as the earthquake is over," he said, "all train travel is halted because track walkers must look at all the tracks to make sure they are not split anywhere. Commuter travel is completely disrupted because no trains move until the tracks are inspected and repairs made."

Kennedy was in Japan just after the first skyscraper was completed and there was an earthquake. "It was front page news how that building survived," he said, "but the new buildings, the tall buildings, are constructed to withstand earthquakes by using new techniques. The new tall buildings usually survive better in an earthquake than the older buildings."

Naturally, Kennedy has many friends in Japan, and he is appreciative of Japanese art. He collects Japanese prints, especially the beautiful modern block prints.

Countries Kennedy has visited, other than Japan, include Taiwan, Hong Kong, India, Iran, Lebanon, and most of the countries in Central Europe. With all of his traveling he has never been south of the equator, he said. But there is always a next time.

Kennedy has the highest respect for Japanese business acumen and determination. He has worked with Japanese engineers and speaks highly of their ability.



Carlos Kennedy as Chairman of the Working group on Video Test Materials at the 122nd Technical Conference in New York, November 9-14, 1980.

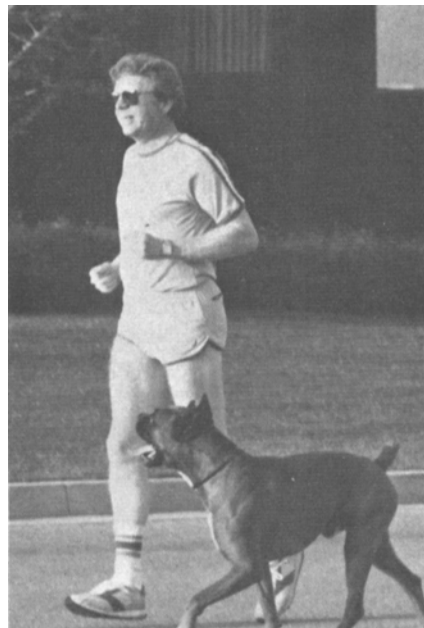
An International Society

"The SMPTE is becoming more international," Kennedy said, "the world is smaller because of the speed of travel and communications. We all have friendships with people in other countries, and the influence of the Society is felt in almost every country in the world. We now have two international governors, and I believe that in the future the SMPTE will become more and more an international society."

Hobbies

Kennedy is an enthusiastic skier, both on water skis and on snow. He is also a jogger. He enjoys jogging, partly because it requires no special equipment and wherever he is — anywhere in the world — he can go out early in the morning and do two or three miles. When he is at home he has a companion jogging with him — his Boxer, named KC. KC has his own style of jogging, but four-legged jogging can be just as much fun as the more usual two-legged style, KC says. Well, not in so many words, but he can certainly communicate.

Kennedy's three children presented KC to him as a surprise gift on Kennedy's 50th birthday. "When I first saw him," he said, "he weighed one pound and I could hold him in my hand. Now he weighs 75 pounds and is the most lovable, friendly dog you can imagine. He is really something. He is unique." KC, who is, obviously a very



Carlos Kennedy with his jogging companion, KC.



Carlos Kennedy, Program Chairman of the 13th Annual SMPTE TV Conference held in San Francisco, February 1979, with his daughter, Kerri (center), and his wife, Fran.

special person in the Kennedy household, is very talented. "He loves to swim in the pool," Kennedy explained, "and he can retrieve things from the shallow end. He can dive in and pick up a stick or a ball or something from the bottom of the pool. He loves the water so we had no problem in teaching him to dive. He is very trainable and is so loving and eager to learn that training him is a pleasure."

Another hobby of Kennedy's is repairing and restoring old sports cars. He does all the repair work on his cars, and is presently engaged in restoring a 10-year-old sports car. He has immediate plans to restore a second one.

Family and Friends

Kennedy's oldest friend in the Society is a college mate of his and they became acquainted through a mutual interest in photography. Kennedy and Roland Zavada both worked as photo editors on the college yearbook. Zavada was a year ahead of Kennedy and, following graduation, he joined Eastman Kodak. Kennedy was photo editor of the college yearbook during his junior and senior years, and when he graduated he followed Zavada to Eastman Kodak. He spent almost four years in Rochester (1952-1956), but then he decided that electronics interested him more than the chemical side. However, his television activities actually started at Kodak when he did some research into the industrial uses of television cameras. "After leaving Kodak I lost touch with Rollie for a while, but then we ran into each other

at an SMPTE Conference in New York and we renewed our earlier friendship."

Kennedy's wife, Fran, attends the SMPTE Conferences. She was unofficially active at the Television Conferences in San Francisco before there was a formal Ladies' Program, greeting the women and taking them around the city. She was Chairman of the Spouses' Program Committee for the 15th Television Conference. She was also a member of the Ladies' Program at the 123rd Conference in Los Angeles.

Kennedy has three married children. His oldest daughter, Karla Kay, and his son, Martin Charles, have graduated from California universities. Karla has one son, the Kennedy's adored only grandchild. The youngest daughter, Kerri Kim, who also works at Ampex, will soon graduate from college. She has helped her mother with the Television Conference Activities.

Reminiscences

In recalling his days with Dage, Kennedy noted that Dage, under his direction, had produced all of the surveillance cameras used in Launching Pad 39 at the Kennedy Space Complex. Ninety or so cameras were installed, but at the first launch the flames were so fierce that some of the cameras were burned to a crisp. But fortunately, the cameras that had been completely destroyed were instantly replaced — which was a kind of an accolade for Dage. — *Rae Hargrave*