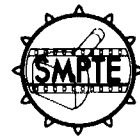




# SMPTE Board of Editors

## 1982-1983



*Calvin M. Hotchkiss, Chairman of the Board of Editors*

**Calvin M. Hotchkiss**, Chairman of the SMPTE Board of Editors, is the Coordinator of Engineering Services for Eastman Kodak Company. His headquarters are in New York City. A graduate of Princeton University (B.A. 1943), he also attended the University of Rochester, where he was granted the M.A. degree in 1949. Previously, in 1945, he had joined Eastman Kodak Company, and in 1949 he was assigned to Kodak-Pathé in France as a chemist in sensitometric research.

He took courses at the Sorbonne, receiving additional graduate degrees in 1950. That same year he returned to Eastman Kodak in the United States (New York City) as a photographic engineer. As an engineering service representative for Eastman Kodak, he assisted many motion picture laboratories and television stations on the East Coast in setting up both black-and-white and color motion picture processes. In his present post, to which he was appointed in 1971, he coordinates the technical services of the sales and engineering staff for the Motion Picture and Audio-visual Markets Division throughout the New York City region.

Hotchkiss joined the SMPTE in 1951 and was made a Fellow in 1972. He served the Society as Governor (1978-1979), and is currently Governor (New York Region) for the 1981-1982 term. He was Program Chairman of the 110th Technical Conference (1971), Associate Program

Chairman for the 114th Conference (1973), Associate Program Chairman at the 122nd Conference (1980), and Registration Chairman for the 118th Conference (1976). He has served on a number of SMPTE Committees and has held the offices of Manager, Secretary-Treasurer and Chairman in the New York Section.



*Michael Barlow*

**Michael Barlow**, a Fellow of the SMPTE, is Supervising Engineer for The Canadian Broadcasting Corporation in Montreal. He was born in London and was educated at King William College on the Isle of Man (1942-1948) and Cambridge University (1950-1953). From 1948 until 1950 he had served in the British Royal Corps of Signals. Following his graduation from Cambridge he joined the Marconi Company in England. In 1957 he was transferred to Canadian Marconi. He became a citizen of Canada in 1964, and that same year he joined the Canadian Broadcasting Corporation Engineering Headquarters, where he first designed mobile units and then was placed in charge of the Toronto CBC studio's conversion to color. Barlow joined the SMPTE in 1958 and was made a Fellow in 1967. He was instrumental in organizing the Montreal Section and served as Section Chairman for the term beginning in 1960. He was Associate Papers Chairman for the Technical Conference in Montreal and served as Topic Chairman (Television) for the 110th Conference held in Montreal in 1971.



*K. Blair Benson*

**K. Blair Benson**, an Engineering Consultant residing in South Norwalk, Conn., was Editorial Vice-President for the SMPTE from 1976 through 1980. A member of the SMPTE since 1959 and a Fellow since 1961, among other SMPTE activities, he served as Vice-President of Television Affairs and on the Board of Governors. He served also on several SMPTE Committees including the Financial Advisory Committee and the Public Relations Advisory Committee, of which he was Chairman. He is also a member of the Television Video Technology Committee and the Committee for Video Recording and Reproduction Technology. In 1948 Benson joined CBS Television Network Engineering Department where he was concerned with design and development problems relating to videotape recording, television film recording, television film transmission, and standards conversion. In 1972 he joined Goldmark Communications Corporation and in 1977 he joined Video Corporation of America as Vice-President of Engineering and Technical Operations.



*Edward J. Blasko*

**Edward J. Blasko**, Engineering Coordinator for Eastman Kodak

Company in Oak Brook, Ill., is a Fellow of the SMPTE. He was graduated from the University of Rochester in 1965 and that same year he became a member of the SMPTE. He was made a Fellow in 1980. His professional career with Eastman Kodak began following his graduation when he joined the Film Technical Services Division in Rochester. Prior to his present assignment he held engineering posts in Hollywood and Seattle. While in Seattle he helped to found the Pacific Northwest Section. He was Chairman of the Chicago Section for the 1978-1979 term. In 1977 he was awarded the SMPTE Citation for Outstanding Service to the Society.



*Jack F. Christensen*

**Jack F. Christensen**, formerly Managing Editor of the *SMPTE Journal*, is now with the Illuminating Engineering Society as Technical Editor. Earlier in his career he had been with IES for eight years as Senior Editor. He was the recipient of the Award of Excellence from the Society for Technical Communication for his editorial coordination of text and graphics of the *Journal of the IES*. He was also Associate Editor of the *IES Lighting Handbook*. Christensen was also Associate Editor of the *Lighting Design and Application*, a national lighting-architectural magazine, and he is the author of numerous articles on architecture and lighting design. From 1952 through 1956 he served as a communications specialist in the U.S. Air Force. Prior to becoming Managing Editor of the *SMPTE Journal* Christensen was Editorial Coordinator for the Mergenthaler Linotype Company.



*Elmo R. Clark*

**Elmo R. Clark** is Regional Markets Specialist for Eastman Kodak Company in Oak Brook, Ill. He attended the University of Kansas. He was graduated in 1963 with the B.A. degree and then continued with graduate work which earned for him the Master's degree in 1966. That same year he joined Eastman Kodak in Rochester as a Market Analyst. After transferring to Oak Brook his responsibilities included market development in the areas of audiovisual technology and motion pictures. He joined the SMPTE in 1980. Among other activities in the Chicago Section, he served as Sponsorship Chairman for the special meeting on film held May 8, 1981.

**Lincoln L. Endelman**, A Fellow of the SMPTE, was Vice-President for Photonic Affairs for the 1980-1981 term. He is currently Manager, Test Equipment Engineering for the Optical Technology Division of Perkin Elmer in San Jose, Calif., a post he has held since 1967. He joined Perkin Elmer in 1962 as Field Manager, directing a group of engineers who performed tests on electro-optical systems. He became a member of the SMPTE in 1956 and was made a Fellow in 1980. He was U.S. Delegate to the International High Speed



*Lincoln L. Endelman*

Congresses in 1976 and Tokyo in 1978. He contributed reports on the 10th, 11th, 12th and 13th High Speed Congresses to the *Journal*.



*Herbert E. Farmer*

**Herbert E. Farmer**, Professor of Cinema at the University of Southern California, has been a member of the SMPTE since 1943. He was made a Fellow in 1957. He has held a number of offices in the Society, among them Vice-President for Educational Affairs (three terms), SMPTE Secretary (1961-1962), and Editorial Vice-President (three terms). A member of several committees, he is presently Chairman of the Educational Advisory Committee. In 1976 he received the Eastman Kodak Gold Medal Award for his achievements in the advancement of education for motion picture production.



*C. Robert Fine*

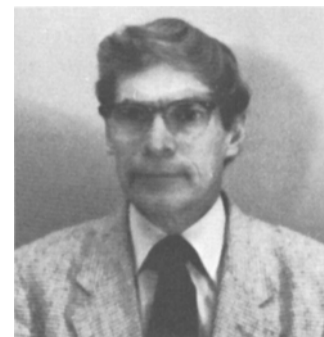
**C. Robert Fine**, a Fellow of the SMPTE, is President of Fine Communications Corporation in Harrison, N.Y. A specialist in sound, he began his career in 1945 at Majestic Records, later becoming Chief Engineer, Music Scoring, for Reeves Sound Studios, before founding Fine Communications. He holds a number of patents, one of the more recent being for a Narrow Bandwidth Picture Transmission

Apparatus (U.S.A. 1971). In 1963 he received a Grammy Award for Best Engineering, Novel Effects, Mercury Records. He is a visiting lecturer at New York University and a consultant. He joined the SMPTE in 1949 and among other activities he served as a Program Co-Chairman for the 120th Technical Conference in New York City.



*Leonard A. Green*

**Leonard A. Green**, Chief of Operations for the National Film Board of Canada in Montreal, joined the SMPTE in 1960 and was made a Fellow in 1976. He is currently serving as Governor of the Canadian Region for the 1982-1983 term. Among other activities he is a member of the Audio Recording and Reproduction Technology Committee, and Chairman of the Sound Subcommittee on Time Codes. In his work at the Film Board and as consultant to a number of motion picture organizations, Green has been influential in the advancement of sound recording techniques throughout Canada.



*Raymond L. Hallows, Jr.*

**Raymond L. Hallows, Jr.**, is Senior Staff Engineer for CBS TV Network. He became a student member of the SMPTE in 1949 and a full-fledged member in 1953, following graduation in 1952 from the University of Missouri—Rolla with the BSEE degree. He is a charter

member of the Philadelphia Section and has served as the Section's Membership Chairman.



*William D. Hedden*

**William D. Hedden**, was President of the SMPTE for the 1977-1978 term, a member of the SMPTE since 1943 and a Fellow since 1961. He has held a number of offices in the Society. He has been Executive Vice-President, Sections Vice-President, a member of the Board of Governors, Sections Vice-President, and a Manager of the Chicago Section. He has also served on a number of SMPTE Committees. He is currently Vice-President of Calvin Communications in Kansas City, Mo.



*Arthur Kaiser*

**Arthur Kaiser**, a member of the SMPTE since 1969, is the Associate Director for Advanced Television Development at the CBS Technology Center at Stamford, Conn. He joined CBS in 1958. He was graduated from the City College of New York in 1942 with the B.A. degree. He has done graduate work at Harvard University, M.I.T., and Brooklyn Polytechnic Institute. Before joining CBS he was with Sperry Rand Corporation, Sperry Products, Inc., and with General Electric Co. as Project Engineer. During 1957 he served as Instructor in Television Engineering at the Connecticut State Teachers College.

**Paul A. Kaufman**, a Fellow of the SMPTE and a member of the Society since 1948, is the President of Du Art Film Laboratories in New York City. He has been with Du Art for 45 years, and during that time has made many important technical contributions. Among other developments he is credited with the design and installation of the first Eastman Color Negative II,



*Paul A. Kaufman*

Type 5247 and 7247 machine in a U.S. commercial laboratory. He also developed a computerized timing system consisting of a tape corrector, mini computer, editing table, printing machine reader and analyzer. He is the author of a number of technical papers, many of which he has presented at SMPTE Technical Conferences.



*Eric V. Knutsen*

**Eric V. Knutsen**, A Fellow of the SMPTE, is Project Engineer for TVC Laboratories in New York City. Prior to his joining TVC, he was with Eastman Kodak, where he served as liaison between users of motion picture and TV films and the research, technology and manufacturing aspects of Kodak. He joined the SMPTE in 1972 and was made a Fellow in 1981. His services to the Society include the chairmanship of the Film Technology Committee, a post he has held since 1978. He was also a member of the U.S.A. delegation to ISO TC/36, Cinematography in Williamsburg (1973), Paris (1976) and Antwerp (1979).



*Richard Marcus*

**Richard Marcus**, formerly with the British Broadcasting Corporation, came to the United States in 1966, where he formed Rombex Productions Corp., a subsidiary of Du Art Film Laboratories. Later he formed his own production facility, Richard Marcus Productions. He joined the SMPTE in 1966 and was made a Fellow in 1976. He has given courses at the New York Institute and has conducted monthly seminars on video technology for filmmakers. Among other Society activities, he served as Program Chairman for the 122nd Conference.



*Stanley F. Quinn*

**Stanley F. Quinn**, Director of Engineering for the Canadian Broadcasting Corporation, joined the SMPTE in 1962 and was made a Fellow in 1970. He joined EMI in 1951, where he designed switches for the BBC, and in 1957 he went to CBC as a specialist in broadcast engineering. He has published a number of technical papers, several of which appeared in the *SMPTE Journal*. He has served on a number of SMPTE committees including the New Technology Committee and the Public Relations Advisory Committee.

**Edward H. Reichard**, Vice-President, Technical Planning for Consolidated Film Industries in Hollywood, is a Fellow of the SMPTE. He was graduated

from the Stevens Institute of Technology, Hoboken, N.J., in 1933, and has specialized in the design and development of motion picture laboratory printers and processors as well as in the development of new techniques. In 1976 he was awarded the SMPTE Progress Medal in recognition of his engineering contributions to the design of



*Edward H. Reichard*

equipment and for his technical achievements in the field of motion picture laboratory technology. A member of the SMPTE since 1946, he served on the Board of Governors from 1960 to 1969 and again from 1978 to 1980. He is currently serving as Governor (Hollywood Region) for the 1982-1983 term. Other activities include Vice-President for Motion Picture Affairs (1970-1977) and Sections Vice-President (1981). He has also served on a number of SMPTE committees.



*Franklin R. Reinking*

**Franklin R. Reinking**, a Film Engineer for Eastman Kodak Co. at Kodak Park, in Rochester, N.Y., joined the SMPTE in 1959 and was made a Fellow in 1978. In 1975 he was sent by Kodak to Teheran, Iran, to conduct training seminars at the Iranian Ministry of Culture and Art on the technical aspects of operating a color motion picture film laboratory. He has been active in the Rochester Section, serving at various times as Membership Chairman, Program Chairman, Publicity Chairman and Manager.



*Frederick M. Remley, Jr.*

**Frederick M. Remley, Jr.**, SMPTE Vice-President for Educational Affairs, is the Director of Michigan Media, Television and Film Center, University of Michigan. A member of the SMPTE since 1954, he was made a Fellow in 1967. He has been actively involved in the work of the Society since he became a member. He has been a member of several SMPTE committees, serving as Chairman of the Committee on Video Recording and Reproduction Technology (1966-1970) and of the Committee on New Technology (1975-1979). He has also served as a representative of the Society on various international committees. He has held several offices in the Detroit Section including Manager, Secretary-Treasurer, and Chairman. In 1978 he was awarded the SMPTE Citation for Outstanding Service to the Society.

**Joseph Roizen**, a member of the SMPTE since 1957 and a Fellow since 1980, is President of Telegen, a consulting firm that he founded some years ago. The firm provides international technical and market research services in television. Prior to founding Telegen, Roizen spent 12 years with Ampex. Since joining the Society he has continued to participate in Society affairs at both local and national levels. He has presented more than 25 programs to local and national groups and has lectured at a number of SMPTE-sponsored workshops and seminars.



*Joseph Roizen*

He has served three terms as Governor and has been Chairman of the Public Relations Advisory Committee.



*Koichi Sadashige*

**Koichi Sadashige**, Director, Engineering Development, Matsushita Electric Industrial Co., and Manager of the Matsushita Applied Research Laboratories, became a member of the SMPTE in 1962, and a Fellow in 1980. In 1977 he received the *SMPTE Journal's* Honorable Mention Award for his paper on "Overview of Time-Base Correction Techniques and Their Applications," published in the October 1976 *SMPTE Journal*. He is the author of many other technical articles, many of which have appeared in the *Journal*. Among other responsibilities at Matsushita, Sadashige handles the coordination of specialized engineering and marketing efforts between Japan and the United States.



*Richard K. Schafer*

**Richard K. Schafer**, a Fellow of the SMPTE, is a Product Planning Specialist for Eastman Kodak Co. in Rochester, N.Y. His professional career with Kodak began following his graduation from the University of Pennsylvania in 1958 and two years of graduate work at the University of Rochester (1958-1960). As a photographic engineer he participated in the design and performance evaluation of motion picture film. He was directly involved in the creation of Eastman Color Reversal

Intermediate Film. In his present post he is concerned with planning new and improved motion picture products to meet future technological requirements. He joined the Society in 1964 and was made a Fellow in 1972. He has held various offices in the Rochester Section including Secretary-Treasurer (1971) and Section Chairman (1972). He was Laboratory Practices Topic Chairman for the 111th Technical Conference.



*Sidney P. Solow*

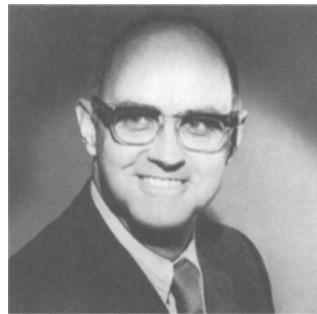
**Sidney P. Solow**, an Honorary Member of the SMPTE, is Chairman of the Executive Committee of Consolidated Industries. He is also Associate Professor of Cinema at the University of Southern California. He was graduated from New York University in 1930 and during the years he has received many honors for his contributions to the advancement of motion picture technology. In 1974 he received the SMPTE Progress Medal in recognition of his many contributions to motion picture laboratory technology including the applications of chemical, mechanical and optical innovations for the improvement of laboratory techniques. He became a member of the SMPTE in 1934. He was made a Fellow in 1943 and became an Honorary Member in 1981. Among other activities he served as National Treasurer in 1959.



*Israel Switzer*

**Israel Switzer** is the Senior Engineering Consultant for Cable-

casting Ltd. in Toronto. The firm has 200,000 cable subscribers in Canada and has new cable systems under construction to serve areas in Atlanta and Los Angeles. He has also been retained as Senior Engineering Consultant to Cablenet Division of Cybermedix, a Canadian firm with 130,000 subscribers in Canada. He was a consultant to the Government of Canada on low-power television broadcast technology (1977). Switzer joined the SMPTE as a student member when he was attending the University of Alberta and later became a full-fledged member. He began his career as a petroleum geophysics computer and instrument specialist for the United Geophysical Company and later founded the firm of Switzer Engineering Services Ltd. He is a member of the Board of Directors of the National Community Antenna Television Association of Canada.



*John W. Wentworth*

**John W. Wentworth**, Manager of Broadcast Technical Training for RCA, Camden, N.J., joined RCA in 1949, following graduation from the University of Maine. He participated for more than 10 years in the advanced development of color television studio equipment and he taught company-sponsored courses. Since 1960 his career has been centered on education and training. As Manager of Educational Electronics (1960-1963) he was involved in developing techniques for utilizing television for instruction, and he personally produced a 90-lesson TV course in basic electronics. In his present post he is responsible for the development and operation of programs for the technical training of broadcast systems customers and employees. He is the author of a classic textbook, *Color Television Engineering*, published by McGraw-Hill. Wentworth joined the SMPTE in 1957 and was made a Fellow in 1962.



*Howard E. Wilkinson*

**Howard E. Wilkinson**, a registered professional engineer, has been involved in the engineering aspects of television since his graduation from Carleton University in 1963. He is currently Regional Engineer, Production Facilities, for the Canadian Broadcasting Corporation in Toronto. Earlier experience included service as Design Engineer for Central Dynamics Ltd.; Director of Engineering, University of Ontario; and Projects Manager for Imagineering Ltd., Consulting Engineers. He joined the SMPTE in 1968. He has served as Manager and Chairman of the Toronto Section and as Chairman of the 1981 SMPTE Mini-conference in Toronto.



*Arthur P. Willis*

**Arthur P. Willis**, Sales and Engineering Representative for Eastman Kodak's Motion Picture and Audiovisual Markets Division, has spent his entire career with Eastman Kodak, beginning in 1950 when he was still attending Rochester Institute of Technology. His main interest was in photoscience and he took a number of related courses in engineering. Later he became a technical editor for Eastman Kodak in Rochester, where he was responsible for various publications dealing with television broadcast of motion picture films. In his present post he is responsible for all of the New York City region with the exception of Manhattan. Willis became a member of the SMPTE in 1964. He resides in Norwalk, Connecticut.