

Dimensions of Photographic Control and Data Records on 35-mm Motion-Picture Film Perforated 8-mm Type S (1-3-5-7-0) and on 16-mm Motion-Picture Film Perforated 8-mm Type S (1-3) and (1-4)

Page 1 of 2 pages

1. Scope

This practice specifies the lateral location and dimensions of the photographic control and data records on 35-mm motion-picture film perforated 8-mm Type S (1-3-5-7-0), and on 16-mm motion-picture film perforated 8-mm Type S (1-3) and (1-4).

2. Dimensions

The lateral location and dimensions of the control and data records shall be as specified in the figures and tables.

3. Film Stock

The film stock used shall be safety type, cut and perforated in accordance with American National Standard Dimensions for 35-mm Motion-Picture Film, PH22.165-1981; Dimensions for 16-mm Motion-Picture Film Perforated 8-mm Type S, (1-3), ANSI PH22.151-1981; and Dimensions for 16-mm Motion-Picture Film Perforated Super 8, (1-4), ANSI PH22.168-1973 (R1980). The dimensions, the width scanned by the control and data reproducer, and the reproducer spectral sensitivity of the photographic control and data record shall be in accordance with SMPTE Recommended Practice on Dimensions of Photographic Control and Data Record on 8-mm Type S Motion-Picture Prints, RP 118-1983.

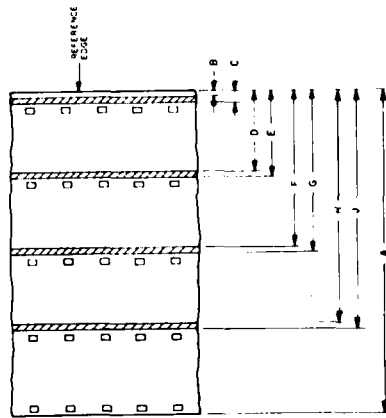


Fig. 1
Data Track on 35-mm Film Perforated 8-mm Type S (SR)

Dimensions	Inches	Millimeters
A	1.377	34.98 ref
B	0.035 ± 0.002	0.84 ± 0.05
C	0.047 ± 0.002	1.19 ± 0.05
D	0.317 ± 0.002	8.81 ± 0.05
E	0.361 ± 0.002	9.17 ± 0.05
F	0.661 ± 0.002	16.79 ± 0.05
G	0.675 ± 0.002	17.11 ± 0.05
H	0.975 ± 0.002	24.76 ± 0.05
J	0.989 ± 0.002	25.12 ± 0.05

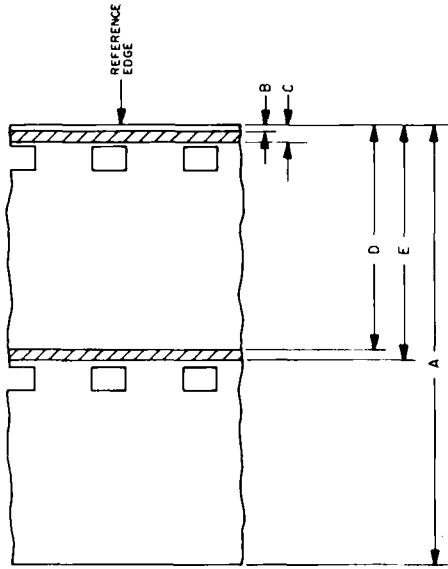


Fig. 2
Data Track on 16-mm Film Perforated 8-mm Type S (1-3)

Dimensions	Inches	Millimeters
A	0.628	15.95 ref
B	0.003 ± 0.002	0.08 ± 0.05
C	0.017 ± 0.002	0.43 ± 0.05
D	0.317 ± 0.002	8.05 ± 0.05
E	0.331 ± 0.002	8.41 ± 0.05

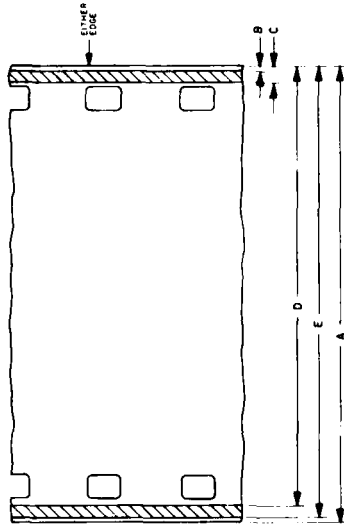


Fig. 3
Data Track on 16-mm Film Perforated 8-mm Type S (1-4)

Dimensions	Inches	Millimeters
A	0.628	15.95 ref
B	0.003 ± 0.002	0.08 ± 0.05
C	0.017 ± 0.002	0.43 ± 0.05
D	0.611 ± 0.002	15.52 ± 0.05
E	0.625 ± 0.002	15.88 ± 0.05