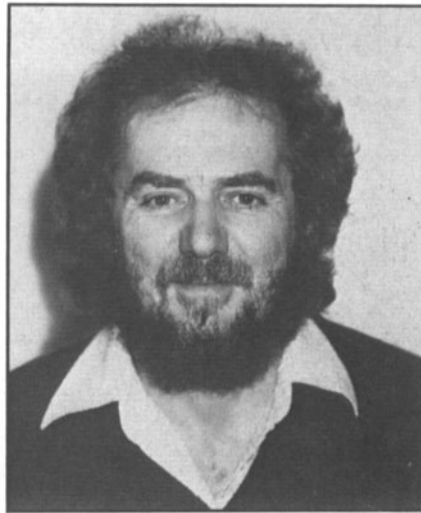
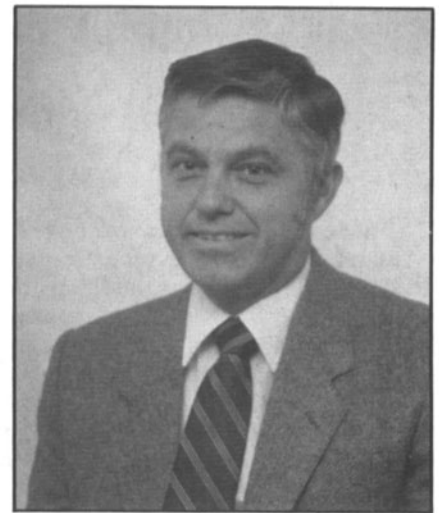


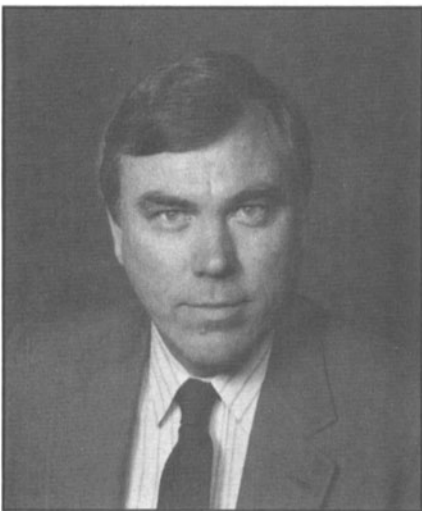
Glen Pensinger  
General Arrangements Chairman



John Streets  
Program Chairman



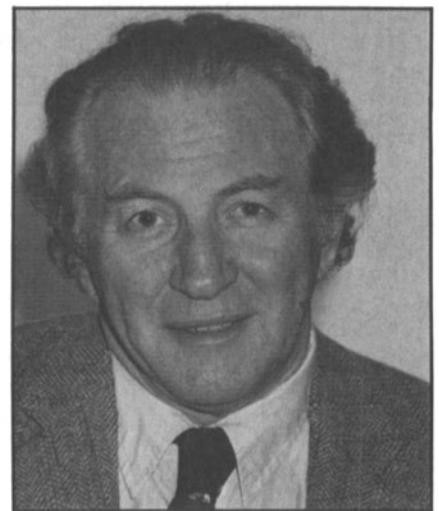
Vinson Perry  
Future Technology Session Chairman



Gary Thompson  
Digital Components Session Chairman



Merrill Weiss  
Analog Components Session Chairman



Joseph Roizen  
Stereo Audio Session Chairman

## Advance Program

The following is a tentative listing of the papers scheduled to be presented at the TV Conference as of November 30, 1984. The final program will be available at the conference. Questions about the technical program, specific papers, or sessions should be addressed to Program Chairman John Streets, Merlin Engineering Works, 1880 Embarcadero Rd., Palo Alto, CA 94303; or to Editorial/Program Coordinator Mary V. Connolly, SMPTE, 862 Scarsdale Ave., Scarsdale, NY 10583.

The SMPTE/EBU Control Network:  
A Progress Report, *Thomas R. Meyer, Dynair Electronics, Inc., and Michael J. Stickler, BBC*

### Friday Morning, February 15

#### Digital Components

Digital Component Television Made Easy for Everyone, *E. Stanley Busby, Ampex Corp.*

Digital Production Switchers, *Michel J. Favreau, Thomson-CSF*

Digital Wideband Frame Stores, *Charles Poynton, Poynton Vector*  
The All-Digital Studio Is Here, *Dominique Nasse, TDF/CCETT*

Digital TV Tape Recording: A Report of Progress toward a Standard, *Fred Remley, University of Michigan*

Digital Video Studio Standards: A Progress Report, *Stan Baron, Thomson-CSF*

### Friday Afternoon

#### Analog Components

Component Analog Tutorial with Progress Report, *Merrill Weiss, Imagex*

Component Codec, *Larry Thorpe, Sony Broadcast Products Co.*

Component Processing in Switchers and TBCs, *Ralph R. Barclay, Barclay Research Group, Inc., and David E. Acker, FOR-A Corp.*

Latest Status — B-MAC System, *John Lowry and Keith Lucas, Scientific Atlanta*

Development of the I-PAL System, *Gerhard Holoch and Norbert Mayer, Institut fuer Rundfunktechnik*

The D2-MAC Packet System, *J. Sabatier, CCETT*

Component Analog Switcher Design — A General Overview, *Birney*

*Dayton, Grass Valley Group*  
 A Unique Method for Measuring the Parameters of an Analog Component Signal, *Dan Baker, Tektronix, Inc.*

Panel Discussion, *M. Weiss (moderator), B. Dayton, S. Baron, L. Thorpe, C. Poynton, and D. Nasse*

### Saturday Morning, February 16

#### Future Technology

Technical History of Home VCR Development, *Yuma Shiraishi, Victor Co. of Japan, Ltd.*

AVA Developments, *Gerry Engbretson, Ampex Corp.*

A Disc Recorder for HDTV, *Tateo Toyama et al., Sanyo; and Yuichi Ninomiya et al., Japan Broadcasting Corp. (NHK)*

The CCD Broadcast Camera, *Thomas M. Gurley, RCA*

A Possible Digital VTR for HDTV, *Yoshizumi Eto, Hitachi Ltd.*

Super Slo Mo System, *Larry Thorpe, Sony Broadcast Products Co.*

Major Parameters in HDTV, *Tetsuo Mitsuhashi, Japan Broadcasting Corp. (NHK)*

Enhanced Television — A Progressive Experience, *John L. E. Baldwin, Independent Broadcasting Authority*

HDTV: Progressive or Interlaced, *Kerns H. Powers, RCA*

### Saturday Afternoon

#### Stereo Audio in Television

Stereo Audio in TV — Tutorial, *Thomas B. Keller, National Association of Broadcasters*

An Audio Time-Base Corrector, *Thomas Rosback, Harris Corp.*

Stereo Audio Encoding for TV, *Leslie Tyler and Bill Allen, DBX*

Experience with Stereo Audio in TV Broadcasting, *C. Robert Paulson, AVP Communication*

Digital Stereo Audio, *Howard Jones, BBC*

Digital Stereo Audio in the DVTR, *Kenneth Davies, Canadian Broadcasting Corp.*

Stereo Audio Television Reviewed, *Carl G. Eilers, Zenith Radio Corp.*

HDTV — A Progress Report, *Richard Stumpf, Universal City Studios*

### Demonstration of Component Video Signal Handling

One of the highlights of the conference will be the first major public

demonstration of the capabilities of component video signal handling. In keeping with the theme "Components of the Future," the Papers Committee has asked the Working Group on Component Analog Video Standards to present a demonstration of the state-of-the-art in this area.

This will be the first such demonstration to combine both analog and digital component signal handling, much of which represents recent SMPTE standards activity. These demonstrations will provide the television engineering community with a graphic demonstration that the various SMPTE standards committees have produced not a disparate set of standards, but an integrated system for handling component signals — whether analog or digital, serial or parallel.

The demonstration will be held in the St. Francis Hotel adjacent to the papers and exhibition area. It will incorporate several component video signal sources in both parallel and serial forms. Live camera signals, videotape recordings, and test signals will undergo a variety of processing operations. Component digital portions conforming to the 601 standard will also be featured. The effects of production processing for chroma key and other special effects will also be demonstrated.

The component signal's performance through various combinations of paths and signal impairments will be shown, as will its performance in simulated MAC/DBS transmission environments. The system will demonstrate the easy translation of component video from serial to parallel and analog to digital, back and forth in a variety of combinations. Compatibility of the serial component analog signal with existing television plants will be shown. Advantages of component processing are expected to be readily apparent, even when the signal is ultimately to be displayed in NTSC.

### Reduced Rate Advanced Registration

Those registering for the conference in advance will receive reduced rates (see rates below) if registration is received by January 15. The advance registration form should be returned, with payment, no later than January 15, 1985, to: SMPTE Registration, 862 Scarsdale Ave., Scarsdale, NY 10583.

	Before January 15	After January 15
Member registration	\$110	\$130
Nonmember registration	135	160
Spouses program	45	50

Refunds will be given if request is received at SMPTE Headquarters by Friday, February 8. No refunds will be given after that date.

### Hotel Reservations

The Westin St. Francis Hotel is located in the heart of San Francisco. Visitors will find it an ideal location for enjoying San Francisco's many tourist attractions and fine restaurants. Reservations must be made directly with the hotel (see rates below). *Do not mail hotel reservations to SMPTE.*

	Main Building	Tower
Single	\$101	\$120
Double	116	135
Twin	116	135
Suites	230-375	300, 325

San Francisco hotel tax is 9.75%.

### Social Activities

A full schedule of social activities is planned for the long weekend, and registrants are encouraged to bring their families. The St. Francis Hotel, located in Union Square is close to shops, fine restaurants, and the theater district. A cable car stop is at the door of the hotel.

The first official gathering will be the Get-Together Luncheon Friday noon, with Joseph Roizen as the guest speaker. Following the Friday afternoon technical session, the traditional Wine and Cheese Party, to which all registrants will be invited, will be hosted by the San Francisco SMPTE Section. An optional Sunday champagne tour of the city aboard a vintage streetcar built in 1920 is also planned.

### Spouses Program

Spouses attending the conference will find an exciting schedule of events from which to choose. In addition to activities at the St. Francis Hotel and guided shopping assistance and sightseeing in the city, a Friday tour of the wine country with a gourmet lunch is planned.