

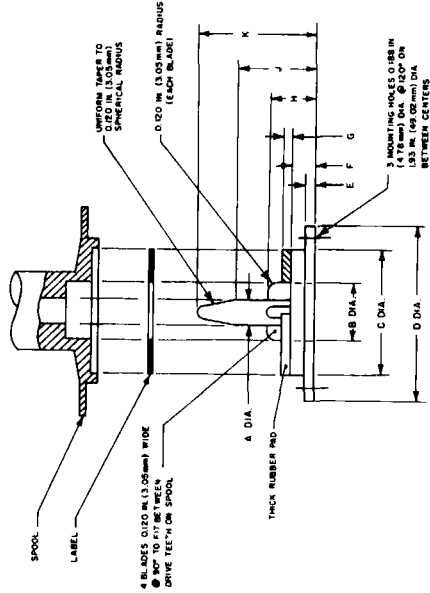
*Labels for Cartridge Spools for  
2-inch Quadruplex Video Magnetic Tape*



**Appendix**

(This Appendix is not part of the SMPTE Recommended Practice, but is included for information only.)

To ensure that the label is properly applied to the spool and to prevent its interfering with the drive areas, it is recommended that the label be of the press-apply type and have an adhesive such that it be removable.



SUGGESTED INSTALLATION TOOL  
STAINLESS STEEL WITH 90-DIG REVERSE  
PRESSURE PAD

Fig. 2

Table 2

Dimensions	Inches	Millimeters
A	0.311 + 0.001 - 0.000	7.90 + 0.03
B	0.750	19.05 nom
C	1.610	40.89 nom
D	2.25	57.15 nom
E	0.12	3.05 nom
F	0.30	7.62 nom
G	0.12	3.05 nom
H	0.90	22.86 nom
J	1.00	25.4 nom
K	1.50	38.1 nom

Dimensions A through D are concentric to within 0.010 in (0.25 mm).

**2. Specifications**

The dimensions of the label and the minimum information contained on the label shall be as specified in Fig. 1 and Table 1.

**1. Scope**

This practice specifies the dimensions of the labels to be used with spools as specified in American National Standard Dimensions of Cartridge Spools for 2-inch Quadruplex Video Magnetic Tapes, ANSI V98.13-1981. The practice also specifies the minimum information required on the label and the space to be reserved for that information.

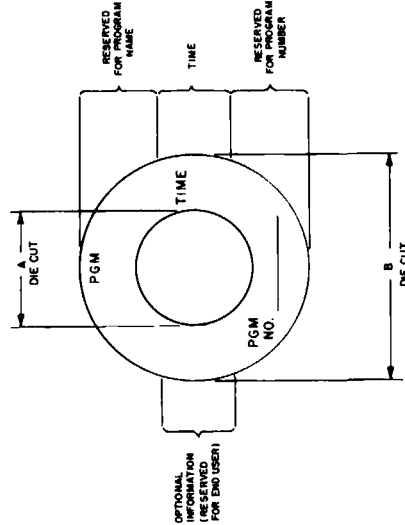


Fig. 1

Table 1

Dimensions	Inches	Millimeters
A	0.770 ± 0.010	19.56 ± 0.25
B	1.600 ± 0.010	40.64 ± 0.25

A and B are concentric to within 0.010 in (0.25 mm).

