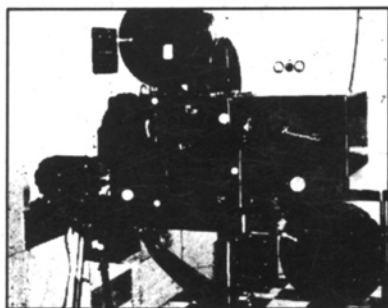


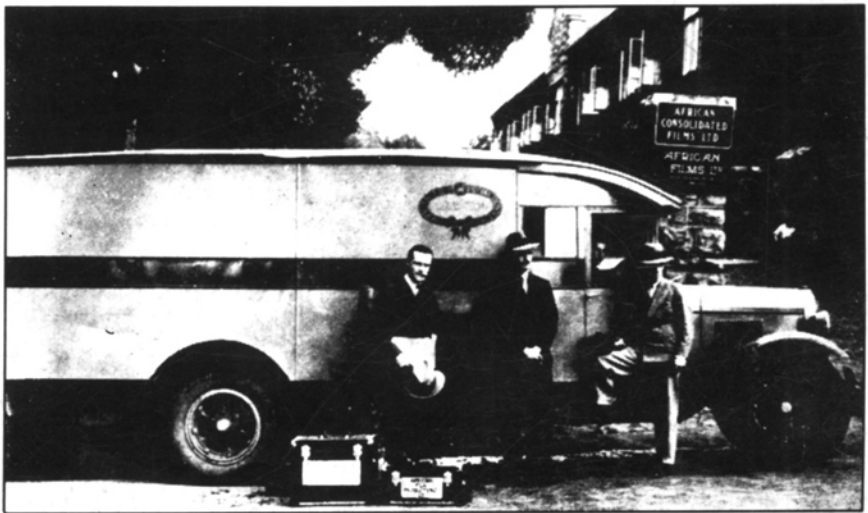
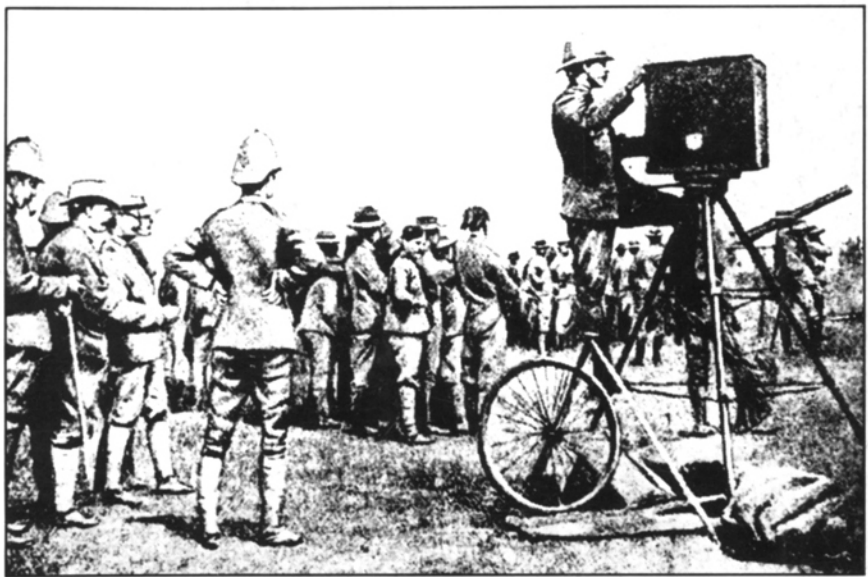
SMPTE Historical Reflections



A comparison of uncrisp and crisped television images: (Top) uncrisp image bandlimited to 375 kc; (Middle) crisped image bandlimited to 375 kc; (Bottom) crisping signals • *A New Crispener Circuit for Television Images* • E. F. Brown • *JSMPT*, November 1963



Telecine projector • *A Non-Intermittent Projector for Television Film Transmission* • H. S. Bamford • *JSMPE*, November 1938



(Top) Film unit (foreground), presumably the Warwick Trading Co.'s at Kroonstad during the South African War; (Middle) Biograph camera in use during the South African War; (Bottom) African Film Productions sound truck, 1930 • *The History of Films in South Africa* • E. C. Howes • *JSMPT*, November 1963