

CHANNEL
YOUR
CREATIVE
CURRENTS

Master the art of advanced television production at Brooklyn College's renowned Television Center, with courses in video art, computerized editing and computer graphics. These high-tech courses are designed for industry personnel, or those with related experience. Take advantage of one of New York City's most valuable resources: Brooklyn College. Courses start February 16. Enrollment is very limited. For course descriptions and an application, call immediately: 718-780-5184 or 718-780-4141

Brooklyn College
City University of New York
Bedford Avenue & Avenue H
Brooklyn, NY 11210

A video camera that grows with you. At Camera Mart.



Ikegami HL-95B Unicam Camera

At Camera Mart we've always had a strong preference for flexible equipment. Utilizing a unique "building-block" concept, the HL-95B is available as a standalone camera capable of accepting any on-board VCR, as well as multicore and triax.

The Ikegami HL-95B Unicam® is the only universal camera system that accepts all tape formats.

A newly developed 2/3-inch Plumbicon® tube (electrostatic focus/magnetic deflection) is incorporated into the HL-95B. Available now from Camera Mart.

The more you know about video, the more you can rely on Camera Mart.

The Camera Mart, Inc.
SALES • SERVICE • RENTAL

Headquarters/New York
456 West 55th Street, New York 10019
(212) 757-6977
Telex: 275619/FAX (212) 582-2498

Upstate/Central N.Y.
305 Vine Street, Liverpool, N.Y. 13088
(315) 457-3703 FAX (315) 457-3795

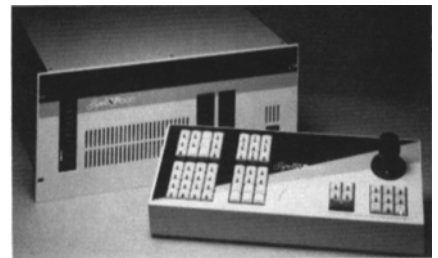
California
1900 W Burbank Blvd., Burbank, CA 91506 (818) 843-6644

Indiana
825 Royal Avenue, Evansville, Ind. 47715 (812) 476-6327

New Products

Further information about these items can be obtained from the addresses given. As with technical papers, the Society is not responsible for manufacturers' statements, and publication of these items does not constitute endorsement of the products or services.

A CCD camera has been introduced by Sony Corp. of America, 9 W. 57th St., New York, NY 10019. The BVP-50, designed for electronic field production (EFP) and electronic news gathering (ENG), has a solid-state sensor that provides greater sensitivity and dynamic range as well as virtual elimination of vertical smear. The camera features a signal-to-noise ratio of 60 dB and an electronic shutter that can be configured to any of seven operating speed controls. With the addition of the CCU-350 control unit, also recently introduced by Sony, the BVP-50 may be easily and conveniently interfaced with other cameras in EFP applications.



Pinnacle Super V-1000 workstation

A desktop video workstation has been introduced by Pinnacle Systems, Inc., 2380 Walsh Ave., Santa Clara, CA 95051. The Super V-1000 permits broadcasters and video producers to add digital effects and transitions in cuts-only editing situations. The system's advanced chroma processing enhances picture quality by producing a 3-dB noise reduction in the chroma channel of a S-VHS signal. The Super V-1000 offers a range of performance features, including smooth picture movements, variable cropping, horizontal and vertical invert, posterization, and tint. The workstation is a multiformat system; it works with S-VHS as well as the U-matic, Betacam, and MII video recording formats.

A recorder has been announced by New England Digital Corp., 49 N. Main St., White River Junction, VT 05001. The PostPro™ is an 8-track direct-to-disk digital multitrack recording and editing system for film and video post-production. It features a programmable, ergonomically-

...with the new Ikegami camera which
...series, with either Beta or
...your choice.
...information, call your Regional
...for the dealer nearest you.



Ikegami

Ikegami Electronics (USA), Inc. 37 Brook Avenue Maywood, NJ 07607

East Coast: (201) 368-9171 West Coast: (213) 534-0050 Southeast: (813) 884-2046 Southwest: (214) 869-2363 Midwest: (312) 834-9774 Hawaii: (808) 946-5955

MOVING?

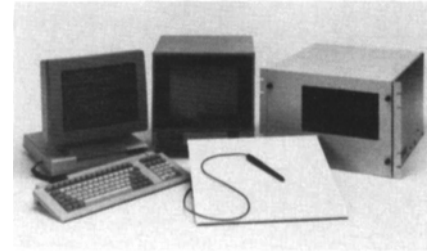
Please attach the mailing label from the wrapper to this form. Allow 8 weeks for change of address to take effect.

Fill in the form below providing either company address or your home address.

Mail to: Membership Dept., SMPTE, 595 W. Hartsdale Ave., White Plains, NY 10607

Member Number	<input type="text"/>	<input type="text"/>	<input type="text"/>	<input type="text"/>	<input type="text"/>	<input type="text"/>	<input type="text"/>	<input type="text"/>	<input type="text"/>
Name _____	Title _____								
Company _____									
<input type="checkbox"/> Company Address _____									
<input type="checkbox"/> Home Address _____									
City _____					State _____				
Postal Code _____					Telephone _____				

designed remote box and direct digital transfer to Sony, Mitsubishi, and AES/EBU standard recording formats.



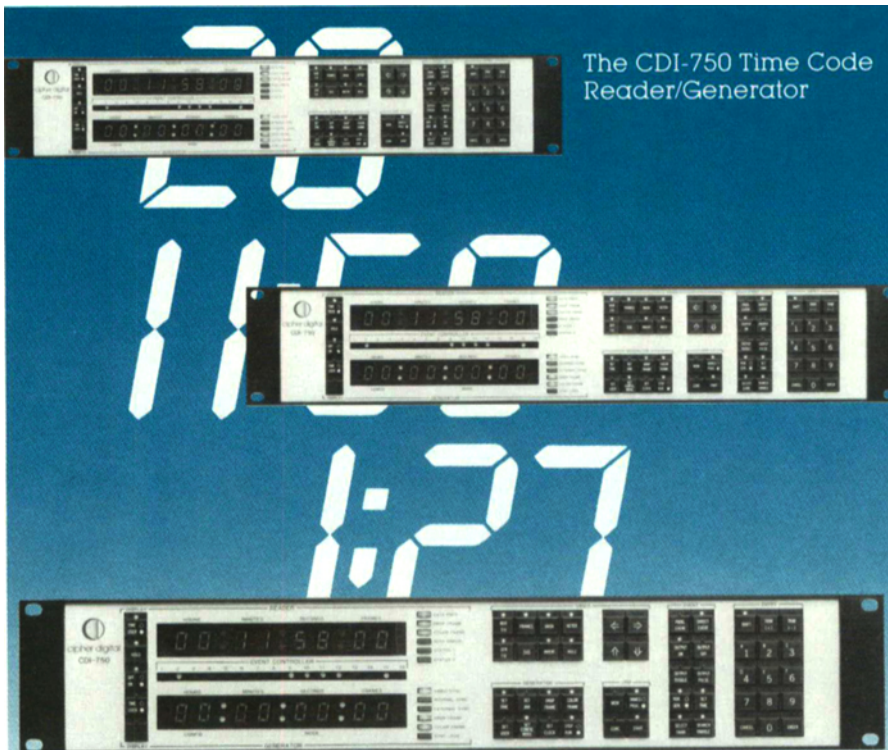
Quanta Artista graphics system

The Artista full-color graphics system has been announced by Quanta Corp., 2440 So. Progress Dr., Salt Lake City, UT 84119. The system provides paint, 3-D modeling, and animation capabilities. The paint features include a flash digitizer for instant camera capture and a user-definable brush. The Artista also offers more than 16 million colors and a "pop-up" color palette with on-screen mixing or select. Complementing the paint features are advanced 3-D modeling and animation capabilities that allow the user to create hierarchical structure and other striking graphics and video art. Artista is housed in a 13-in. high rack-mountable chassis that features two floppy disk drives, 190-Mbyte hard disk, and 32-Mbyte cartridge tape streamer.

The D-6000 "Panther" graphics generator and D-3600 character generator have been put on the market by 3M, P.O. Box 33600, St. Paul, MN 55133. The D-6000 combines the capabilities of a paint system with those of a character generator. As a paint system, the "Panther" performs animation either in the traditional cell-by-cell method or through automatic zoom, flip, or spin functions. Another feature of the paint system is camera grab; the machine accepts black-and-white input from cameras for loading stats and logos. As a character generator, the D-6000 "Panther" features 15 font faces in multiple sizes and italics. A built-in downstream keyer is provided so that the graphic images may be keyed into studio program video.

3M's D-3600 is a two-channel character generator for broadcast and remote van applications and for editing suites and industrial productions. The machine is microprocessor-controlled, and features a color palette of 4096 colors and five built-in fonts. No keying of secret codes is required with the D-3600; characters are seen as they are typed, with the instant display response eliminating reaction time.

A digital still store and retrieval system has been announced by The Alta Group, 535 Race St., San Jose, CA 95126. Named the Centaurus, the system has



The CDI-750 Time Code Reader/Generator

More than just a matter of time

The CDI-750 is a full function reader, generator, character inserter and programmable 16-event controller all rolled into one. In addition to simultaneously generating and reading time code, this intelligent microprocessor-based instrument offers a programmable jam sync mode, built-in time of day clock, and an RS-232/422 computer interface. And with front panel controls, the CDI-750 is an easy unit to operate, affording the user greater flexibility.

Fully compatible with the Shadow II™ and Softouch,™ this system's state-of-the-art software controls make it readily adaptable to future needs.

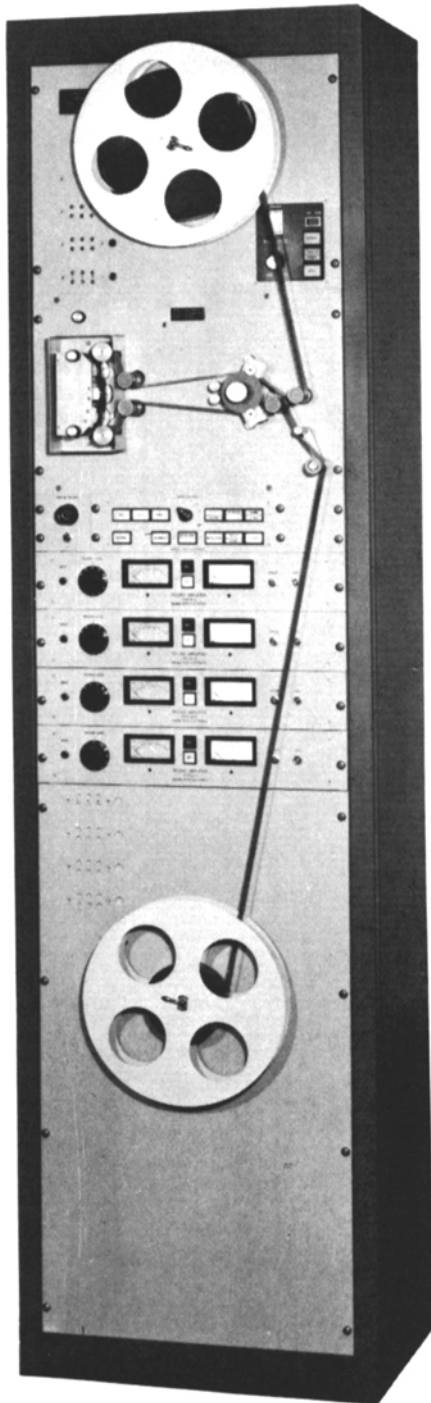
Each unit carries a 3 year warranty.

For more details contact Cipher Digital today. Call (800) 331-9066.



cipher digital, inc.
P.O. BOX 170/FREDERICK, MD 21701
(301) 695-0200 TELEX 272065

Timely today, consistent with tomorrow.



MAGNA-TECH

THE SOUND HEARD AROUND THE WORLD

**Magnetic Film
Recorders and Reproducers
for Television and Film
Sound Post-Production**

HIGH SPEED

Telecine Magnetic Followers
Video Tape-Film Interlock
Electronic Looping
Dubbing Systems
16 and 35mm Electronic Projectors
Total Facility Engineering

WORLDWIDE SALES OFFICES

Paris
Hi-Fidelity Services
4 Rue Semard
75009 Paris, France

Sydney
Magna-Techtronics (Aust.)
PO Box 557
Artarmon NSW 2064
Australia—Telex 24655

Johannesburg
Magna-Tech (SA) Pty
Private Bag #5
Melville 2109
South Africa
Tel: 011-726-4266

Rome
Studio Sound System S.N.C.
Via Teano 305
00171 Roma Italy
Tel: 2715476
Telex 620078

Brussels
A.R.C.
Rue de Boisde Linthout 45
1200 Brussels Belgium

Caracas
Cine Materiales srl
Apartado Postal 61.098
Caracas 106 Venezuela

Willstatt West Germany
Zenon GMBH
Carl-Benc Str. 6
Willstatt 7601
Tel: 07853/7025
Telex: 753537

London
Branch & Appleby
Stonefield Way
Ruislip
Middlesex HA40YL
England

Kuala Lumpur
Kinematronika Sdn. Bhd.
2852, Jalan Selangor/
Persekutan
Federal Hill
Kuala Lumpur, Malaysia

Madras India
S.R.K. Menon
A-4 Parsn-Apts
109-G.N. Chetti Road
T. Nagar
Madras 600 107
Tel: 440079

MAGNA-TECH ELECTRONIC CO., INC.

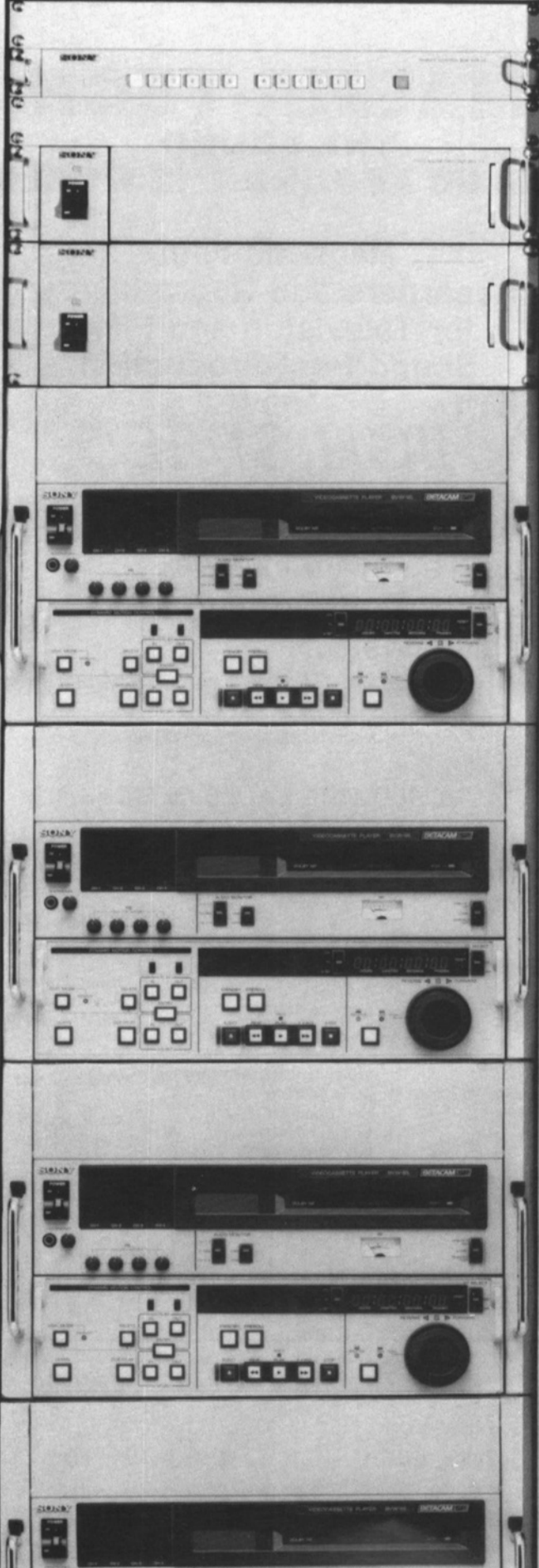
630 Ninth Avenue, New York, N.Y. 10036

Telephone (212) 586-7240

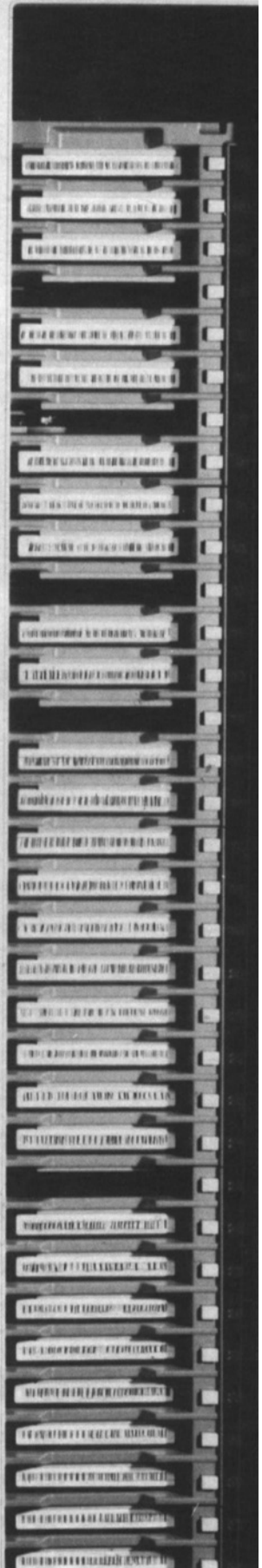
Telex 126191

Cables "Magtech"

SONY



BETACART BVC-10



24-hour cash machine.

Face it. If your station doesn't have a rock-solid, economical way to deliver station breaks, you could go broke.

Enter the Sony Betacart[™] system. With a single stroke, it has redefined the video cart system from temperamental mechanical monster to perpetual profit machine.

Today, the Betacart system is the most accepted state-of-the-art system for commercial presentation. With proven, easy-to-use software packages for spot delivery *and* news. Ultra-reliable, side-loading mechanics. And multiple backup and self-diagnostic systems.

And now, by incorporating Betacam SP[™] technology, the Betacart system delivers even higher quality video and versatile 4-channel audio.

It's one of those rare purchases you can make for your station that pays for itself many times over. And will continue to do so. Because Sony is constantly developing new applications to make Betacart products even more versatile.

For more information on the top cart system for improving your bottom line, contact your Sony Broadcast representative. Or call Sony at 800-635-SONY.

SONY.
Broadcast Products



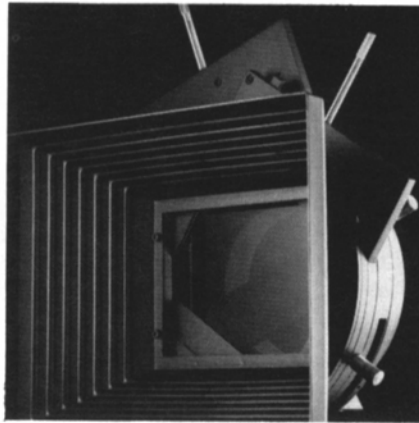


Alta Centaurus still store

been designed to interface with the S-VHS component video recording format, but can also process composite video from the Betacam and U-matic formats. The Centaurus stores up to 140 pictures, logos, slides, and titles on a Winchester hard disk. It is capable of performing special effects, A/B roll video switching, stereo audio mixing, time-base correction, and frame synchronization. The Centaurus has a comb filter that provides improved resolution and reduces chroma/luminance crosstalk.

A time-base corrector has been placed on the market by FOR-A Corp. of America, 320 Nevada St., Newton, MA 02160. The compact, lightweight FA-021 corrects time-base errors from both 1/2-in. and 3/4-in. VTRs, and produces a standard NTSC

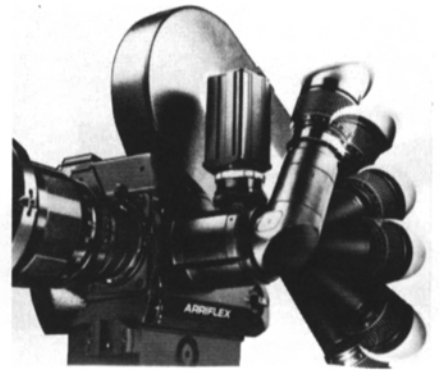
signal output from both V-lock and non-V-lock type recorders. It provides full-color or freeze field or frame functions along with built-in RS-170A standard sync pulse generator with genlock. A remote-control unit is optional on the FA-200.



Geocam matte box

A 4X4 matte box has been introduced by Geocam Corp., P.O. Box 704, Orange, NJ 07050. Referred to by the company as the Universal Production matte box, the system accepts lenses up to 4 5/8 in. in diameter. It fits most ENG, EFP, and 16mm cameras and lenses without special modifications. An adjustable undercarriage permits the matte box to shift left to right

and back to front, and modular construction permits filter stages to be added or removed in the field as required. Other design features of the matte box include safety stops and a locking mechanism.



CSC video door

An orientable video door for the Arriflex 35-3 35mm camera has been made available by Camera Service Center (CSC), 625 W. 54th St., New York, NY 10019. Designed and manufactured by CSC, and approved by Arriflex Corp., the video door adapts to the ARRI 35-3 viewfinder, providing optimum brightness to the video tap and the eyepiece exit. The door does not interfere with the 210° rotation of the viewfinder.

An equipment rack has been made available to the audio industry by Solid State Industries, 2453 Chico Ave., South El Monte, CA 91733. The SR-8A is designed in eight rack-space modules. The modules are constructed of lightweight steel tubing and are designed to fit one on top of another for continuous rack spaces. The SR-8A has four casters (two locking), and a formica top is provided as an option. The unit is open at the back and sides, allowing easy access to connections.


YOUR "ONE-STOP SOURCE" FOR

Frezza-max™

SUPER-PERFORMANCE-SERIES

battery packs - belts - chargers

ac adapters - camera lights & kits

 <p>Model UPS-14 "Power-UPS Interface" runs camera during battery changing. *patent applied for</p>	 <p>Multi-function Dual-channel AC Adapter-Battery Charger Two independent ac adapters or chargers in one unit.</p>	 <p>Full 4AH Premium Battery Packs for portable cameras.</p>
 <p>High-capacity Battery Belts power lights, cameras, & recorders</p>	 <p>12-oz. "Mini-Fill" Camera Lights Accessories & Kits 12 volts, 20 to 100 Watts Used by all 3 major networks.</p>	 <p>FBP-90FC Exclusive: extra output connector for portable lights power lights, cameras, recorders 1-hour re-charge.</p>

For information and catalogs
CALL (201) 427-1160



Frezza Electronics Inc.
5 Valley St. Hawthorne, N.J. 07506
• TWX: 710-988-4142

Advertisers Index

Allen Products	161
Ampex MTD	151
Brooklyn College	154
Camera Mart	154
Cipher Digital	156
Frezzaolini	160
Ikegami	155
Key Systems	163
Magna-Tech	157
Mitsubishi Electric Sales America, Inc.	149
Mitsubishi Pro Audio Group	152, 153
Professional Services	162
Sony	146, 147, 158, 159