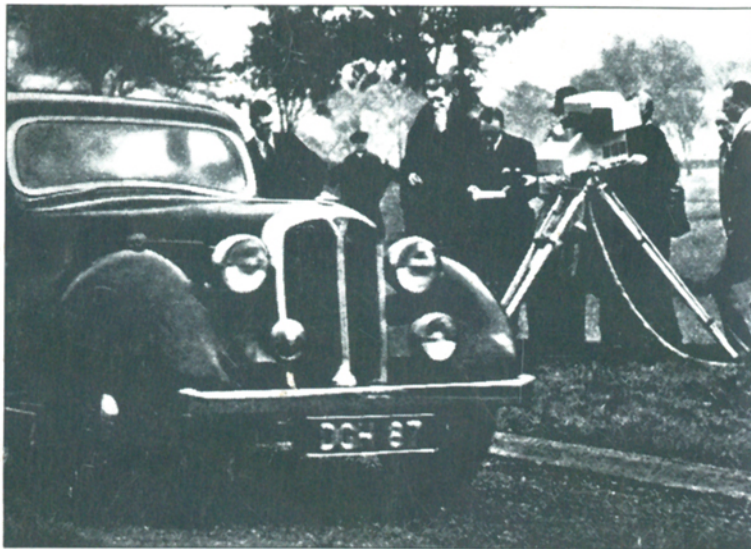


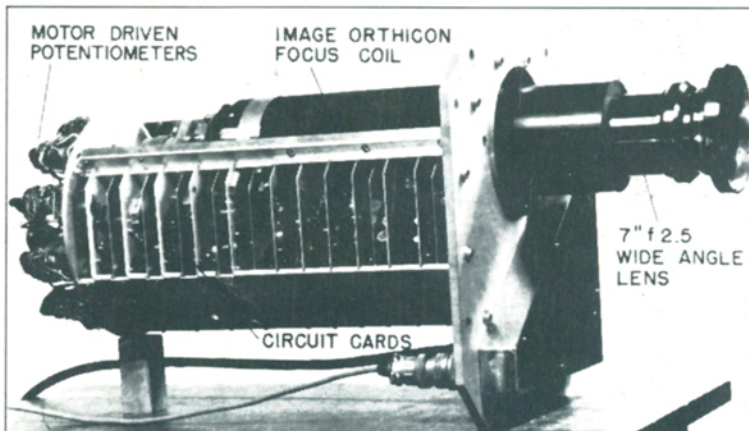
# SMPTE Historical Reflections



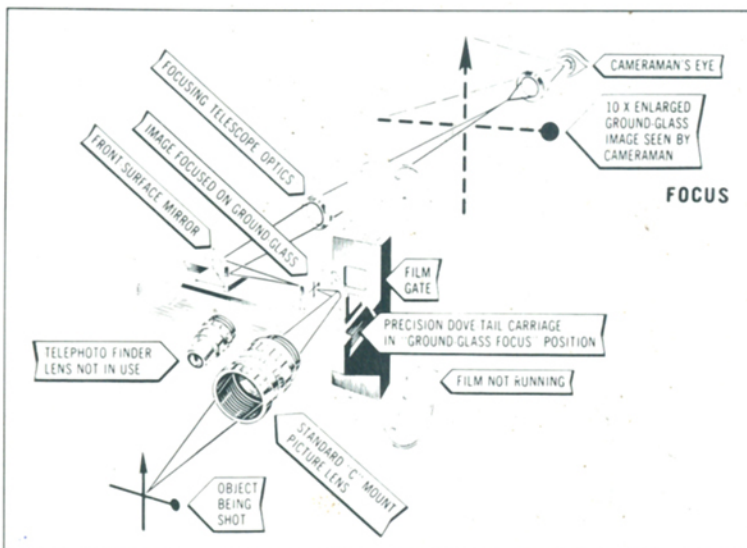
An outside pick-up in England • *The Road Ahead For Television* • I. J. Kaar • *JSMPE*, January 1939



The first scene on the reel, in which Constance Bennett and Cary Grant materialize on a log, is a combination split screen and lap dissolve. After Roland Young's action carried him to the left half of the set, the screen was split optically and a straight shot of the background substituted in the right half until such time as it took for Miss Bennett and Mr. Grant to enter and take their places. The matte was then dissolved out and the original scene dissolved in • *Photographic Effect in the Feature Production "Topper"* • R. Seawright and W. V. Draper • *JSMPE*, January 1939



Wide-angle camera with housing removed • *The Stratoscope II Television System* • L. E. Flory, W. S. Pike, J. M. Morgan and L. A. Boyer • *JSMPTTE*, January 1964



A mirror system for critical focusing (Batch-Auricon, Inc.) • *Motion-Picture Camera Design and Selection* • J. Behrend • *JSMPTTE*, January 1964