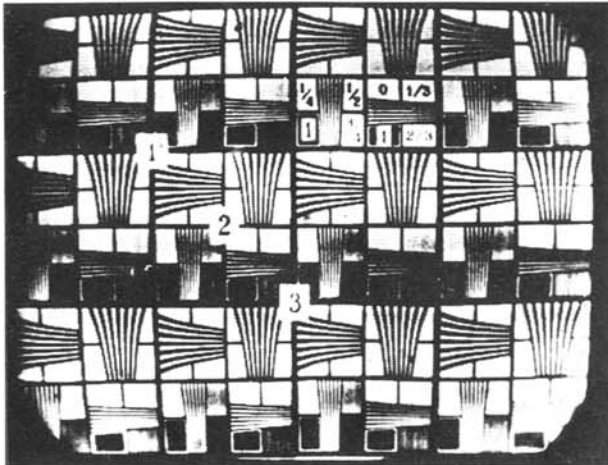
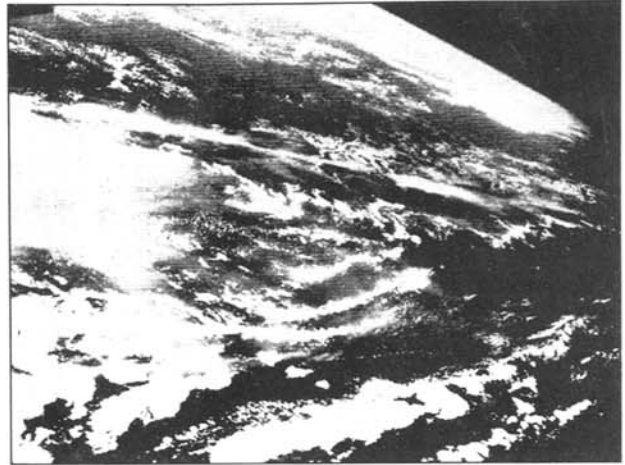


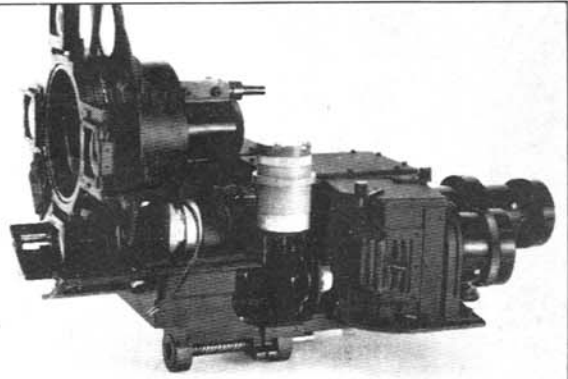
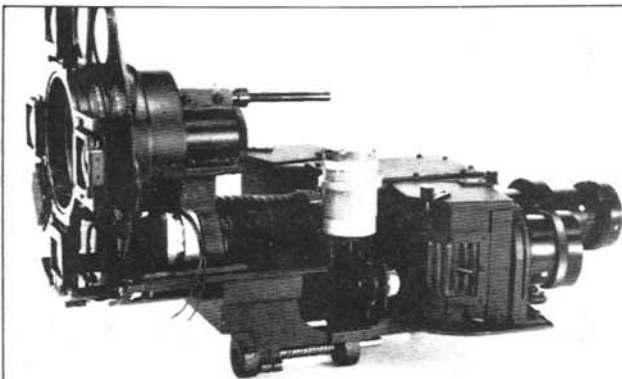
SMPTE Historical Reflections



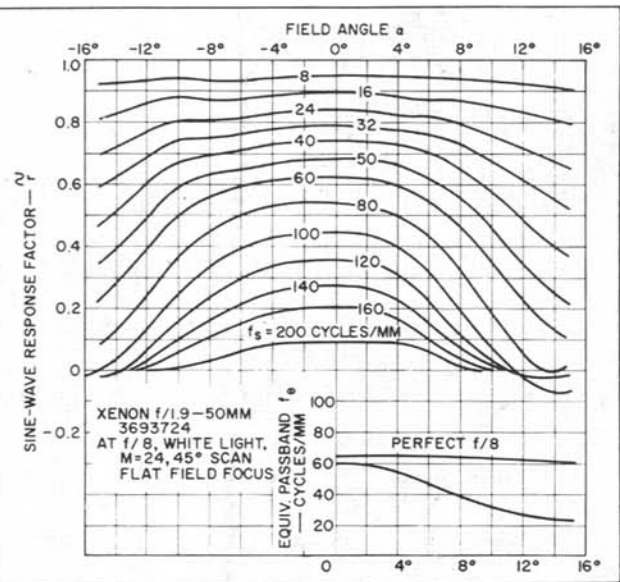
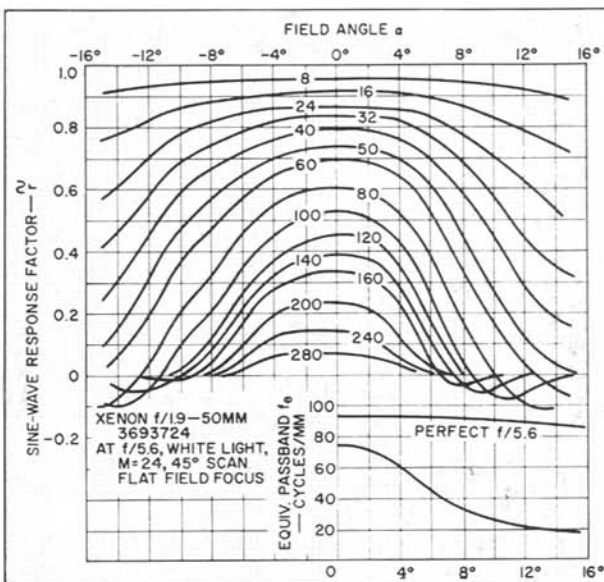
Television image obtained from a test-chart on 35-mm film • *Some Television Problems from the Motion Picture Standpoint* • G. L. Beers, E. W. Engstrom, and I. G. Maloff • *JSMPE*, February 1939.



Original cloud photograph taken from high-altitude rocket • *Automatic Picture Transmission TV Camera System for Meteorological Satellites* • R. A. Stampfl and W. G. Stroud • *J SMPTE*, February 1964.



(Left) Optical orbiting unit between filters and front relay lens systems, infinity position; (Right) Optical assembly slides back and forth on helicoid screw on underside of optical system, in closed position • *A New Optical System and Camera for Color Television* • H. Nomura • *J SMPTE*, February 1964.



Variation of the sine-wave response factor of 50mm xenon in the image field at various spatial frequencies (f_s -lines/mm) and its equivalent passband f_e : a, (left), at $f/5.6$; and b, (right), at $f/8$ • *An Evaluation of Photographic Image Quality and Resolving Power* • O. H. Schade, Sr. • *J SMPTE*, February 1964.