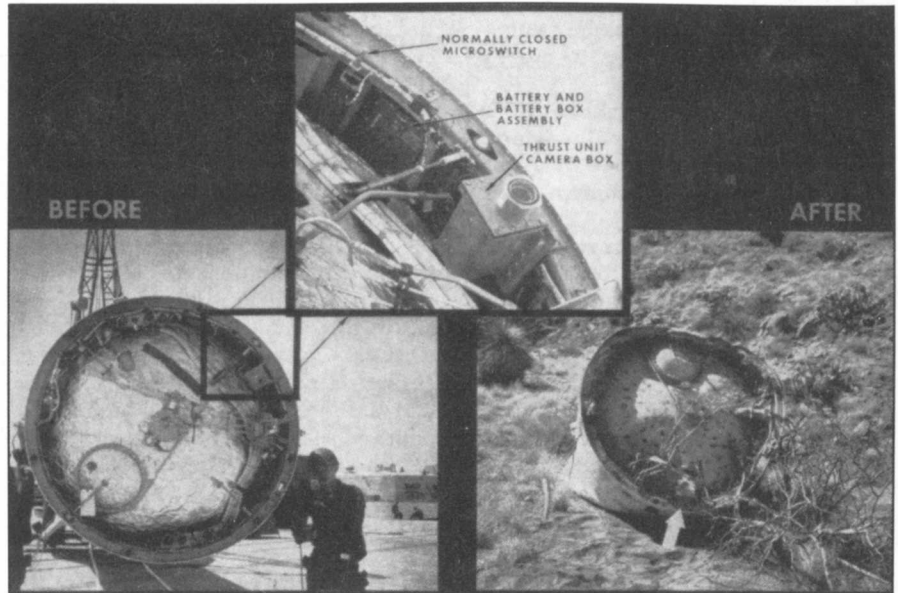
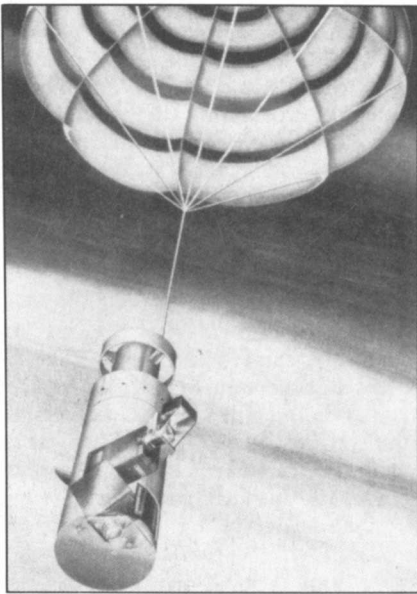
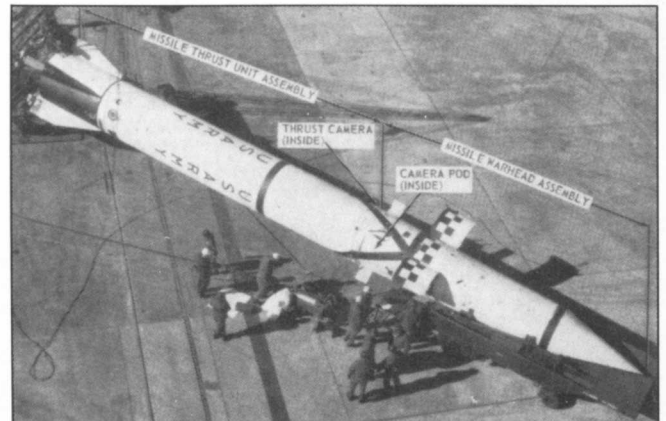
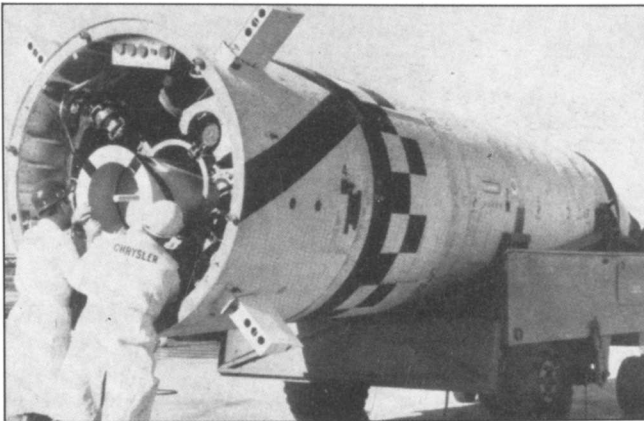


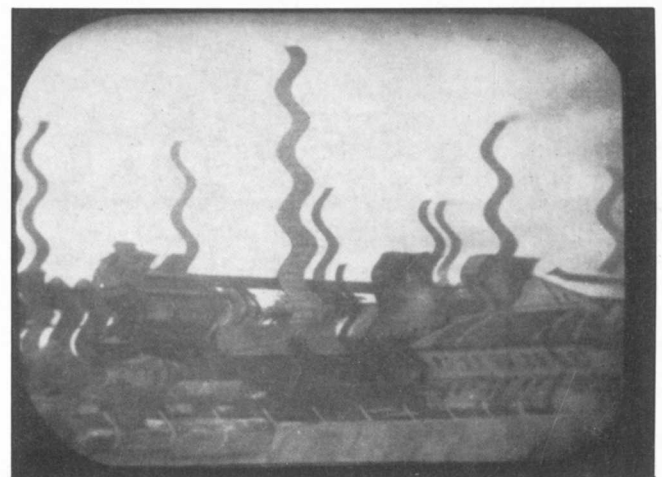
SMPTE Historical Reflections



(Left) Artist's conception of the camera pod with deployed ring slot parachute as it returned to earth; (right) Installation of the thrust unit camera on the forward ring frame of the rocket booster • *Photography in Space of the Ejection of a Capsule Containing a Television Camera and Transmitter* • B. H. Mollberg • *JSMPT*E, June 1964.



(Left) The television capsule is installed in the open skirt section of the missile warhead assembly before mating to the thrust unit; (right) Missile warhead mated to thrust unit • *Photography in Space of the Ejection of a Capsule Containing a Television Camera and Transmitter* • B. H. Mollberg • *JSMPT*E, June 1964.



(Left) Sinusoidal modulation of position in the vertical direction with modulating frequency of 15 kc/sec; (right) Sinusoidal modulation of position in the horizontal direction with modulating frequency of 400 cps • *Recent Developments of Electronic Special Effects in Television* • U. Messerschmid • *JSMPT*E, June 1964.