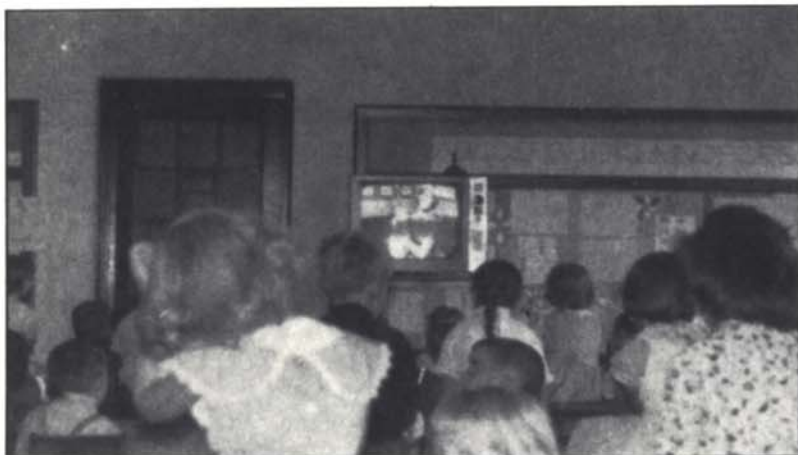


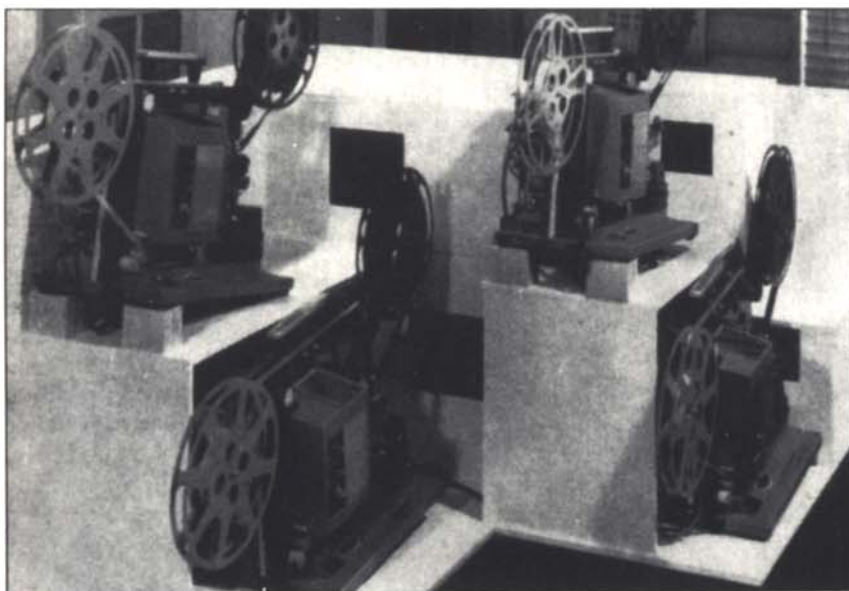
SMPTE Historical Reflections



(Left) The 21 Inch Classroom television programming integrated with the classroom setting and displays; (right) Miss Louise Greep uses informal setting as introduction to a lesson on care of the teeth in the health series "All About You." • *Developments in School Television Program Preparation* • A. R. Stephenson • *JSMPT*, September 1964.



(Left) The WGBH fire; (right) The WGBH mobile unit • *Mobile Video-Tape Production for Educational Television* • R. Morash • *JSMPT*, September 1964.



(Left) Branching sound motion-picture version of the teaching machine. The four projectors are directed into a multiplexer. The machines will be in a room separate from the students, and the screen will be mounted in the dividing wall. In this way students will be less aware of the differences between the machines and the programs; (right) Equipment used in the Carousel version fits into a more compact module, projectors at the top, "black box" on lower left, and Cousino tape units on lower right • *A Branching Teaching Machine Using Motion Pictures* • D. G. Perrin • *JSMPT*, September 1964.