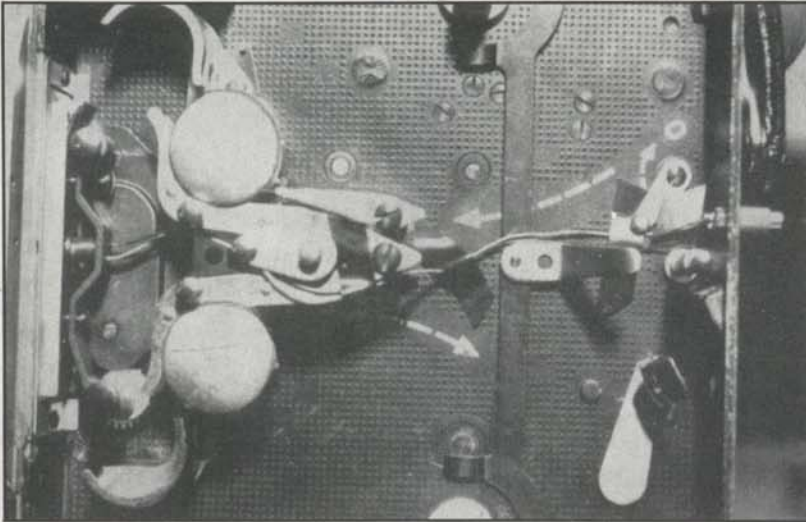
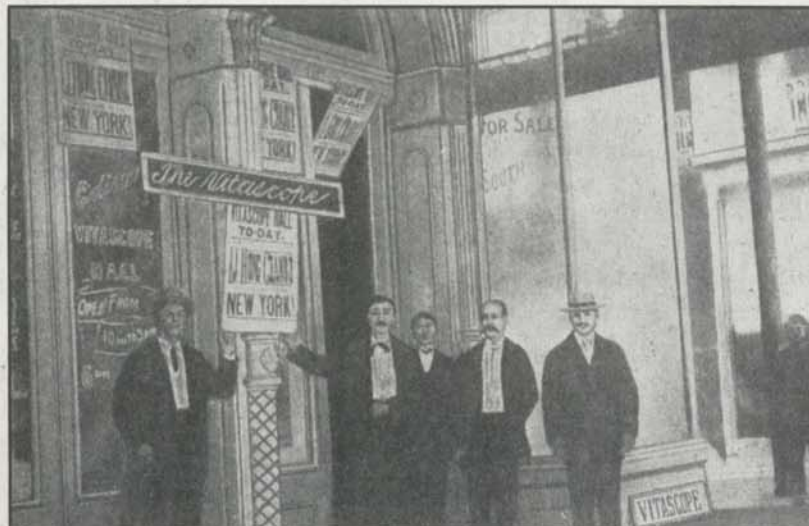
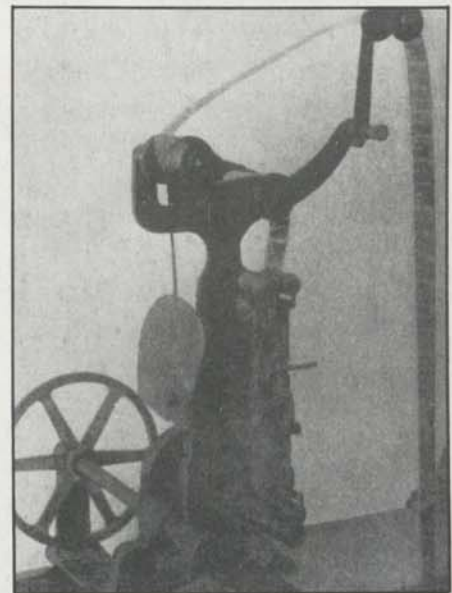


SMPTE Historical Reflections

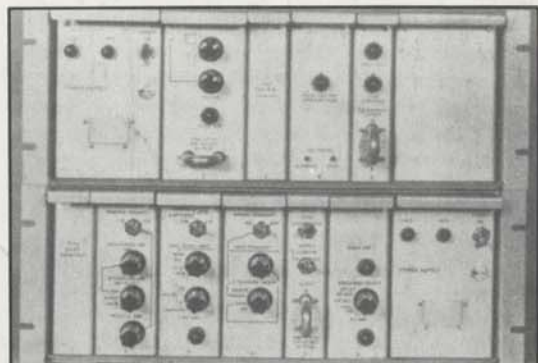
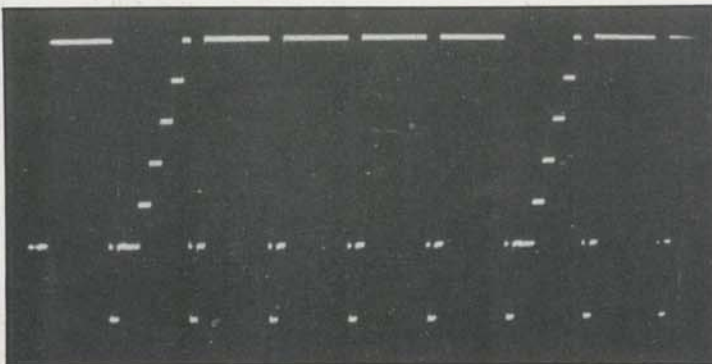


View of pressure plate and photocell installation and wire routing • *A Versatile Technique for Synchronous Remote-Controlled Photography* • H. E. Van Luvanee • *JSMPT*E, November 1965.



The first "motion picture theater," New Orleans, La.; second from left, William Reed, projectionist; fourth and fifth from left, William Rock and Walter Wainwright, proprietors • *Advancement In Projection Practice* • F. H. Richardson • *JSMPE*, November 1940.

(Top and bottom) Side views of one of the first projectors • *Advancement In Projection Practice* • F. H. Richardson • *JSMPE*, November 1940.



(Left) IRE linearity test waveform; (Right) Waveform generators • *Two New Waveform Generators for Television Testing* • A. J. Butt and G. D. Iles • *JSMPT*E, November 1965.