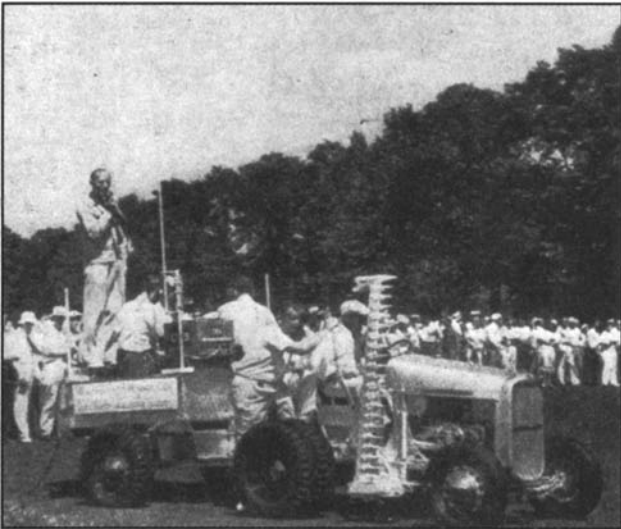


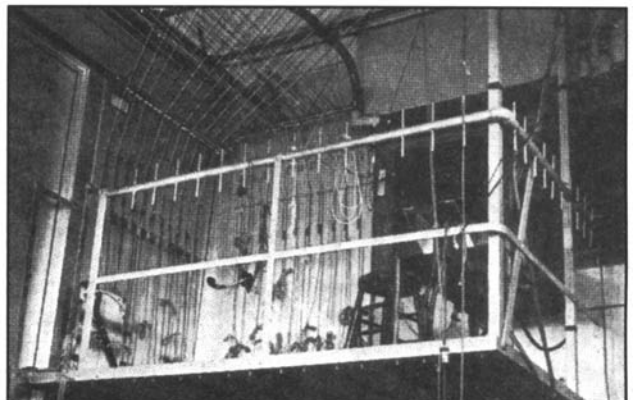
## **SMPTE Historical Reflections**



(Left) Original photograph; (Right) Scanned reproduction of original (441 lines, 30 frames, 4.25 megacycles, slit aperture. *Quality in Television Pictures* • P. C. Goldmark and J. N. Dyer • JSMPE, September 1940.



Scanned pictures (441 lines, 30 frames, 4.25 megacycles,  $\epsilon^{-22}$  aperture) • *Quality in Television Pictures* • P. C. Goldmark and J. N. Dyer • JSMPE, September 1940.



(Left) Set of remotely controlled units, with hemisphere of operation tangent to each other; (Right) Light-control bridge • *Remote Control Television Lighting* • W. C. Eddy JSMPE, September 1940.