

SMPTÉ MOTION IMAGING JOURNAL

VOL. 120, NO. 3, April 2011



EXECUTIVE

Paul J. Hearty
Editorial Vice President

Glen Pensinger
Chairman/Board of Editors

Barbara H. Lange
Executive Director

JOURNAL STAFF
Joel Welch
Director of Professional
Development
914-205-2379
484-702-7339

Dianne Ross Purrier
Managing Editor
914-205-2377

Jeffrey Victor
Advertising Manager
847-367-4073

SMPTÉ Motion Imaging Journal (ISSN: 1545-0279) published 8 times per year by the Society of Motion Picture and Television Engineers, 3 Barker Ave., White Plains, NY 10601. Periodicals postage paid at White Plains, NY, and at additional mailing office.

Copyright © 2011 by the Society of Motion Picture and Television Engineers, Inc. All rights reserved. Printed in the U.S.A. No part of this issue may be reproduced without written permission of the publisher. Statements and opinions expressed in articles or editorials in the SMPTÉ Motion Imaging Journal are expressions of contributors and do not necessarily represent the policies or opinions of the Society.

MEMBERSHIP in SMPTÉ is available according to qualifications. A complete list of membership types and benefits is available at www.smpte.org.

Advertisements appearing in this publication are the sole responsibility of the advertiser.

Subscription rates: SMPTÉ members, \$27.00 included in membership dues; Straight Subscription U.S./Canada, \$155.00; Non-U.S./Canada, \$170.00 (shipping included); Single copy, \$15.00, plus shipping.

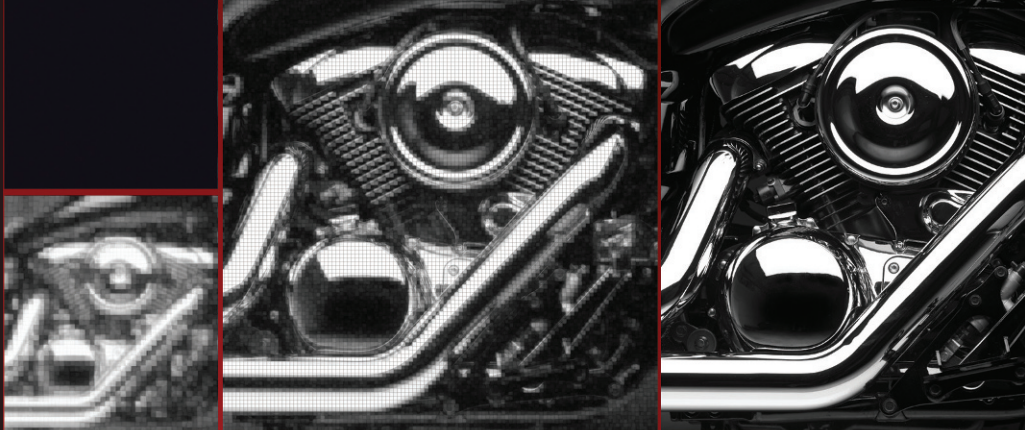
SMPTÉ owns the copyrights to all published material, unless otherwise stated.

SMPTÉ Motion Imaging Journal is registered with Canada Post: CPM # 41003019.

POSTMASTER: Send change of address to SMPTÉ Motion Imaging Journal, 3 Barker Ave., White Plains, NY 10601.

Printed in the USA

Publication Design by Cavich Creative, LLC
www.cavich.com



Reports

Message from the Executive Director Barbara Lange	6
Section Meetings	12

Technical Papers

Compression

GPU Accelerated H.264 Video Compression for Broadcast Dmitry Klimov and Jan Weigner	28
New JPEG 2000 Profiles for Broadcast Contribution Dale Stolitzka, Walt Husak, and Siegfried Foessel	36
A New Programming Methodology for Broadcast Video Encoding Using a Massively Parallel Processor Architecture Michael Bruns, Martin Hunt, Lin Tong, Keith Bindloss	45
Ultra-Low-Delay H.264-Based Wireless HDTV Camera Takashi Tsuyuguchi	55

Vision Research

Evaluation and Color Scheme Correction Support System for Data Content Considering Aging of Human Crystalline Lenses Nagato Narita and Kazuo Ikeda	59
---	----

Departments

SMPTÉ Sustaining Members	8
SMPTÉ Marketplace	66
SMPTÉ Almanac Michael DoJan	67
SMPTÉ Sustaining Membership Application	71
SMPTÉ Membership Application	72

