



By Michael Dolan

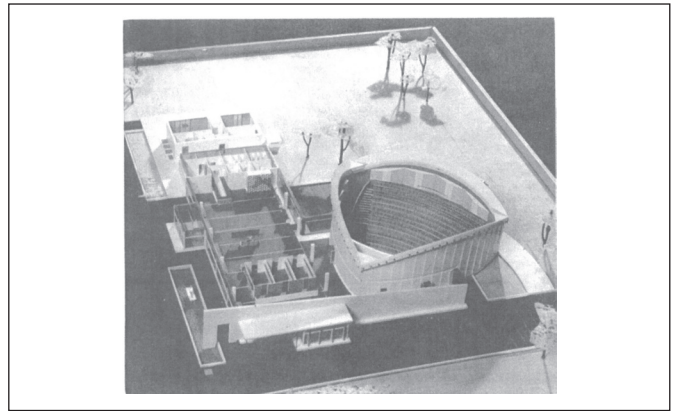
In this column we provide interesting historical briefs from the Journal articles of days past. The purpose of this column is primarily entertainment, but we hope it will also stimulate your thinking and reflection on the Society's history, how far we have come in the industry, and (sometimes) how some things never change. This is not meant to be an authoritative reference, and no attempt is made to correct any past errors or omissions of the Journal. We simply hope you enjoy the material. This column is sponsored by Television Broadcast Technology, Inc. since March, 2001: <http://ieeexplore.ieee.org/stamp/stamp.jsp?tp=&arnumber=7257346>

25 YEARS AGO IN THE JOURNAL

The March 1991 *Journal* published in "Section Meetings:" "Soviet Union, December 12, 1990—The meeting took place at the Cinema and Photo Research Institute (NIKFI). Dr. I. Preobrazhensky, R. Kuliev, and I. Rudinsky, all of Film Presentation Technique and Technology Laboratory, gave reports on the results of their research on winding processes for large rolls of film. The group had created a model of the deformed film state inside a roll and offered new theories for film safety while winding and unwinding large rolls of film. The results of this research has been experimentally confirmed on a special testing stand that makes it possible to imitate the necessary movement conditions for film of all formats. The reports were accompanied by slides and calculation schemes as well as pictures of the testing stand. The reports were of great interest to the 24-person audience and inspired informal post-meeting discussions about the development of theoretical research works.—Eleanora L. Vinogradova (Chairman), NIKFI. For the full article, see: <http://ieeexplore.ieee.org/stamp/stamp.jsp?tp=&arnumber=7234094>

50 YEARS AGO IN THE JOURNAL

The March 1966 *Journal* published in "Specific Trends of Construction of Cinemas in Czechoslovakia," by Frantisek Pilat and Jiri Struska: "In recent years a great movement of population takes place in the summer season. Towns are virtually depopulated, especially during weekends, because the inhabitants leave for the free nature in the country. For these spectators it is necessary to provide an attractive film program for their vacations in the country. On the other hand it is necessary to provide for those spectators who stay in town the opportunity to see a film under similar recreative conditions. For this purpose, in Czechoslovakia, large open-air amphitheatres have been constructed, where, in addition, it is possible to combine the film show with the performance of dance ensembles, orchestras, etc. Besides in such a setting various types of film events may be organized, such as film festivals. Although the operation of these cinemas is restricted by favourable meteorologic conditions—and these are not very ideal in Czechoslovakia—they are very popular and also economically very advantageous. There are about 120 cinemas of this kind in Czechoslovakia. All these cinemas are located in grounds where natural surroundings can enhance esthetic enjoyment of the spectators. They are very often situated at the border of a wood; in a



Motion-picture screen in amphitheater (spa Karlovy Vary) in natural surroundings (Fig. 2, *JMPTE*, March 1966, p. 173).

park in the middle of verdure; or in romantic settings provided by old manors... In unconventional cinematographic systems Czechoslovakia is engaged in further development of the Polycran system (Figs. 8 and 9) and *Laterna Magica* which was referred to at the Society's Technical Conference at Toronto. Recently, the problem of dynamically variable picture size and movement of projection screens in the course of film projection has been solved." For the full article, see: <http://ieeexplore.ieee.org/stamp/stamp.jsp?tp=&arnumber=7264016>

75 YEARS AGO IN THE JOURNAL

The March 1941 *Journal* published in "Report of the SMPE Standards Committee:" "Summary.—Proposals of specifications for (1) 35-mm and 16-mm raw-stock cores, (2) for screen brightness, (3) for rescinding the lantern-slide specifications previously included among the SMPE Recommended Practices, and (4) specifications for cutting and perforating 35-mm positive raw-stock and negative raw-stock have received initial approval of the SMPE Standards Committee in meeting and final approval by letter-ballot of the entire Standards Committee membership. The specifications were approved by the Board of Governors on January 24, 1941, and therefore are now Recommended Practices of the SMPE. This approval by the Board of Governors is in accord with the new standardization procedure for the Standards Committee also adopted by the Board on the same date." For the full article, see: <http://ieeexplore.ieee.org/stamp/stamp.jsp?tp=&arnumber=7252937>