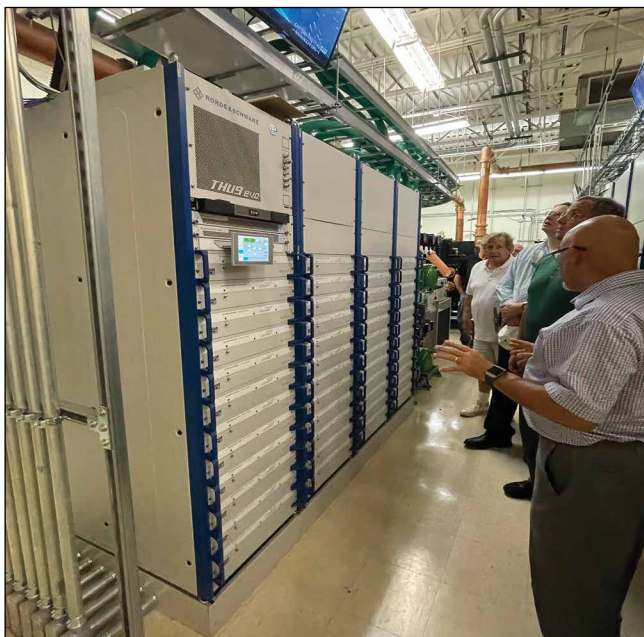


Ohio July 2021

The Ohio Section meeting on 27 July was combined with the local Society of Broadcast Engineers (SBE) Chapter 52 and took place at the new Sinclair Broadcast Television transmitter plant in Columbus. Included within that plant are both Advanced Television Systems Committee (ATSC) 1.0 and ATSC 3.0 “Lighthouse” TV transmitters as well as radio transmission operations. The ATSC 3.0 TV broadcast transmitter is radically different in that it uses the Orthogonal Frequency Division Multiplexing (OFDM) signal standard rather



Ron Taylor, Sinclair Broadcast Engineer, discussing their new Rohde & Schwarz ATSC 3.0 TV broadcast transmitter.

*Digital Object Identifier 10.5594/JMI.2021.3103561
Date of publication: 15 September 2021*





CREATE AMAZING 4K HDR CONTENT



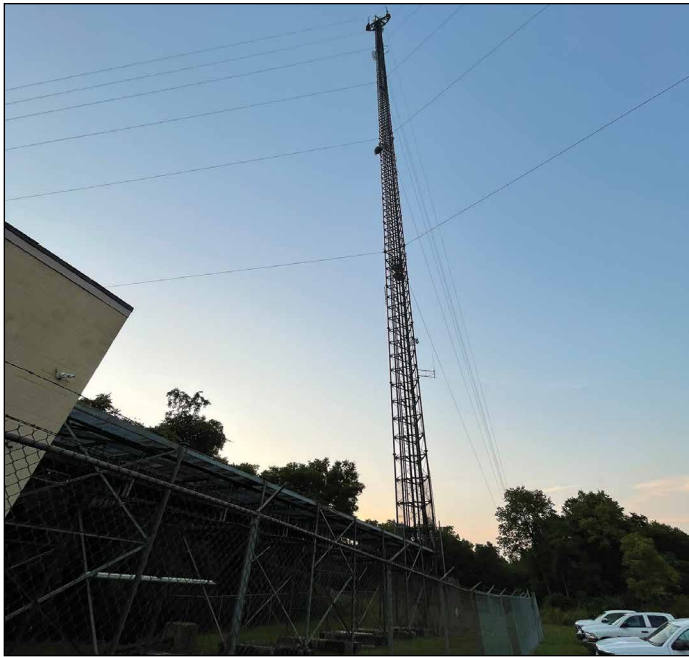
Cortina 4K 3G SD-SDI: ATSC 3.0™

| | |
|--|--|
| <ul style="list-style-type: none"> ■ ATSC 3.0 STANDARD COMPATIBLE BROADCASTING ■ 4K EVENT STREAMING VIA ISP'S OR CDN'S ■ LIVE MULTICHANNEL H.265/ HEVC ENCODER/ STREAMER WITH ATSC COMPATIBILITY | <ul style="list-style-type: none"> ■ 4K NEWS, SATELLITE, AND SPORTS CONTRIBUTION ■ COST-EFFECTIVE UHD/ H.265 ENCODER ■ AUDIO SUPPORT INCLUDES DOLBY®, DIGITAL®, AC-4, MPEG-H 3D, AND AAC |
|--|--|

sales@dveo.com | [+1 858 613-1818](tel:+18586131818) | www.DVEO.com

than the 1.0 Zenith 8-VSB type. On the air since 7 January 2021, their new TV transmitter can accommodate/passthrough up to five complete ATSC 3.0 stations’ signals, including those from other TV stations within the Columbus market, part of a temporary channel-sharing arrangement scenario. The sole purpose of this “Lighthouse” TV station is to broadcast all of the Columbus area TV stations’ ATSC 3.0 signals for up to five years after first launching their 3.0 broadcasts. After that initial five-year period, each station will continue their ATSC 3.0 broadcast services from their individual towers/antennas, and so on, after shutting down their legacy ATSC 1.0 broadcast signal operations.

Ron Taylor and Mark Seekins of the local Sinclair Broadcast TV engineering department reviewed the progress of some of the areas Columbus stations have made



The new “Lighthouse” TV transmission plant tower and antennas.

so far in preparing and implementing ATSC 3.0 broadcasts, as well as plans for adding more features to this new “wider pipeline” capability, such as network affiliate passthrough and local origination of UHD-1/4K video, Dolby Vision HDR, Dolby ATMOS immersive audio, higher frame rates, TV receiver internet interactions, to name a few. After their discussions, both Taylor and Seekins then conducted a comprehensive tour of the various transmitters and associated components within this truly futuristic, state-of-the-art, “Lighthouse” TV transmission plant, one of few in the U.S. at this time! After a lively Q&A session, the meeting adjourned. SMPTÉ

—Gene Batey
Secretary/Treasurer

Design your next products with DekTec



\$604

DTA-2172

2x 3G-SDI/ASI

Low profile
Genlock



\$885

DTA-2174B

4x 3G-SDI/ASI (1x 12G)

Single or quad-link 4K
Genlock



\$1,214

DTA-2178

8x 3G-SDI/ASI (2x 12G)

8x 12G-SDI with scaling
Genlock

DekTec
www.dektec.com

(303) 318-4298
infousa@dektec.com

Also available:
Satellite, QAM, DVB-T2, ATSC 3.0 receiver and modulator, and ASI I/O