

MI

MOTION IMAGING JOURNAL

VOLUME 134 | NUMBER 2 | APRIL 2025

14 Introduction to Innovations in Media Production
Catherine Meininger

Technical Papers

16 Video Processing on Quantum Computers
Thomas Edwards

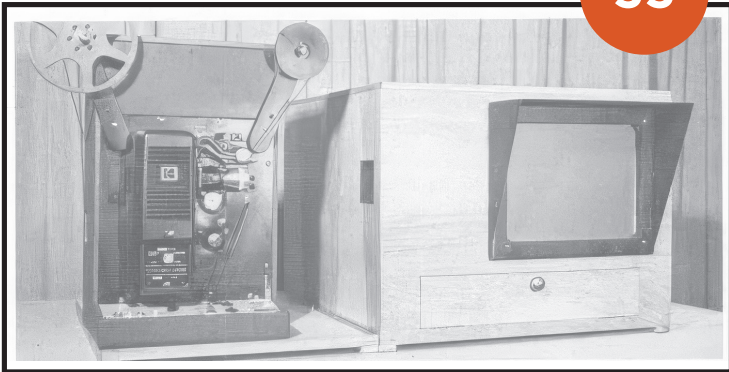
23 Camera Solutions for Achieving Cinematic Aesthetics in Live Production
Klaus Weber

31 LG TV Management for “Color-Close” Applications at Disney
Matt Lathrop, Bill Chernega, Joseph Cates, Jinho Chung, Sally Hattori, and Jeongsim Kim

37 Video Production with Generative AI
Brent Rabowsky

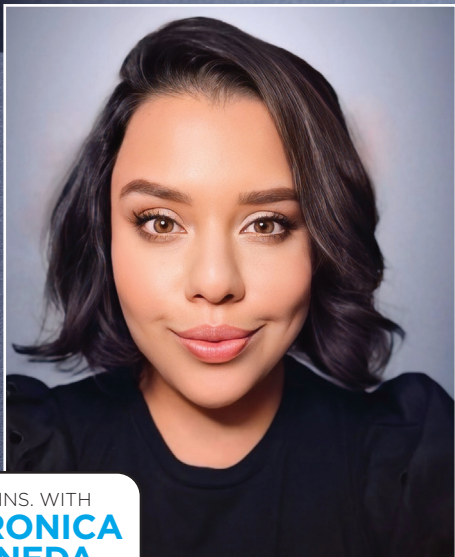


43 **Tutorial**
Color Management Principles for LED Panels in On-Set Virtual Production
David Long, Rod Bogart, Spencer Stephens, Catherine Meininger, Joseph Goldstone, Tim Kang, Kathryn Brillhart, and Jim Geduldick



DEPARTMENTS

- 4 SMPTE Officers
- 5 SMPTE at HPA 2025
- 6 Corporate Members
- 7 New SMPTE Standards
- 8 From the Top:
Renewed Energy, Collaboration, and
Community: SMPTE's Exciting Future
- 10 SMPTE at the 2025 Saudi Media Forum
- 12 Spotlight: Veronica Pineda
- 55 Retrospective: Historical Briefs
from Past Issues



5 MINS. WITH
**VERONICA
PINEDA**



The Society of Motion Picture and Television Engineers, Inc., 50 Main Street, Suite 1000, White Plains NY, 10606

EXECUTIVE
Polly Hickling
Education Vice President

Jaclyn Pytlarz
Chair/Board of Editors

John Belton
Catherine Meininger
Thomas Edwards
James E. O'Neal
Associate Editors

Sally-Ann D'Amato
Executive Director

Catherine Meininger
Guest Editor

JOURNAL STAFF
Maja Davidovic
Director of Education
education@smpte.org

Dianne Purrier
*Managing Editor, Digital and
Print Publications*
journal@smpte.org

Anthony Catalano
*Executive Account Manager,
Advertising Sales &
Sponsorships*
sales@smpte.org

Jeffrey Victor
*Advertising Sales North
America*
jvictor@smpte.org

SMPTE Motion Imaging Journal (ISSN: 1545-0279) published 10 times per year by the Society of Motion Picture and Television Engineers, Inc., 50 Main Street, Suite 1000, White Plains NY, 10606. Periodicals postage paid at WhitePlains, NY, and at additional mailing office. Copyright © 2025 by the Society of Motion Picture and Television Engineers, Inc. No part of this issue may be reproduced without written permission of the publisher. Statements and opinions expressed in articles or editorials in the SMPTE Motion Imaging Journal are expressions of contributors and do not necessarily represent the policies or opinions of the Society. A complete list of SMPTE membership types and benefits is available at www.smpte.org. Advertisements appearing in this publication are the sole responsibility of the advertiser. Subscription rates: SMPTE Members, \$35 USD, included in membership dues; print subscription: \$1,000 (shipping included); SMPTE owns the copyrights to all published material, unless otherwise stated. *SMPTE Motion Imaging Journal* is registered with Canada Post: CPM# 41003019.

POSTMASTER: Send change of address to *SMPTE Motion Imaging Journal*, 50 Main Street, Suite 1000, White Plains NY, 10606. All rights reserved.
PRINTED IN THE USA

DOI: 10.5594/JMI.2025/SGFR3597
Date of publication: 1 April 2025