

**14** Introduction to the Audio Issue:  
Advancing Cinema Sound and  
Beyond  
*Neil A. Shaw*

### Technical Papers

**16** Transfer Function Measurements  
When the Reference Signal is Known  
but not Accessible  
*Juan Sierra Lozano, Swapan Gandhi,  
Jay Wyatt, and Roger Schwenke*

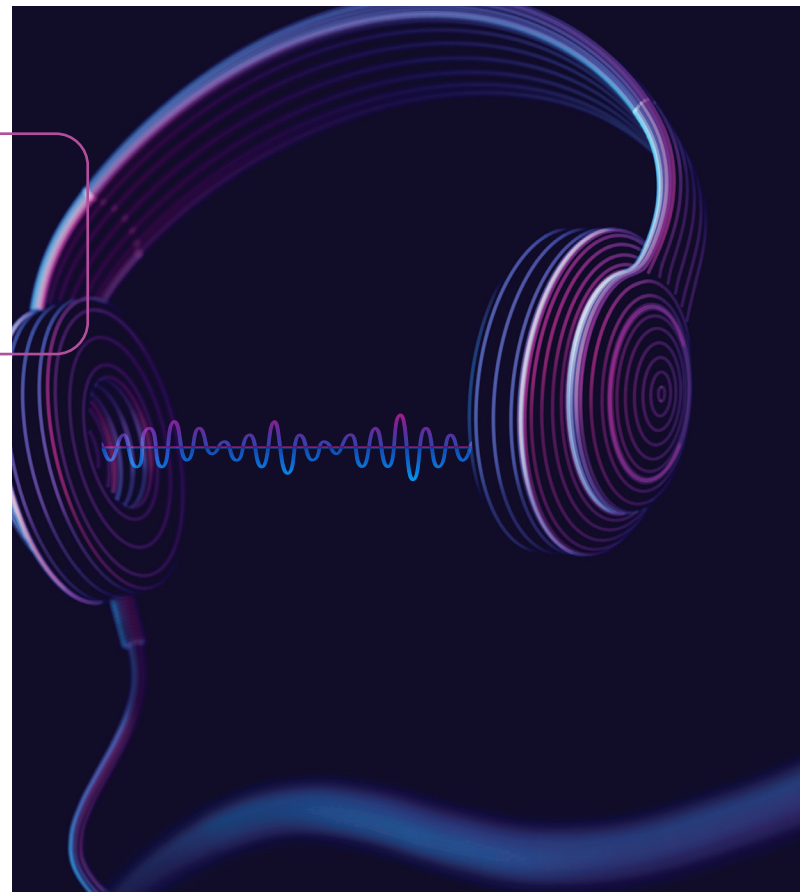
**22** Speech Intelligibility and Audio  
Monitoring in OTT  
*Thomas Lund*

### Applications/Practices

**26** The New Paradigm of Software  
Architected Broadcast Facilities:  
An Asynchronous Media Framework  
Running on IT Infrastructure  
*Marwan Al-Habbal*

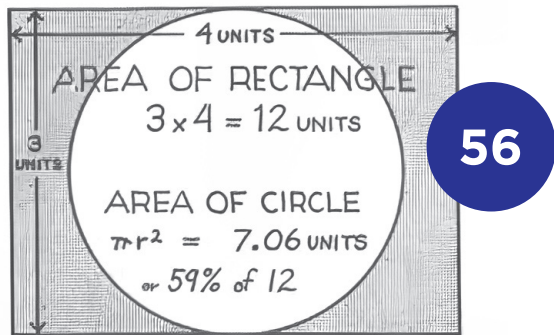
### Case Study

**36** Cinema Sound Playback Level and  
Audience Satisfaction  
*Charles Q. Robinson*



### Technical—Off-Topic

**44** Demystifying the Use of Compression  
in Virtual Production  
*Vibhoothi Vibhoothi, Julien Zouein,  
François Pitié, Christopher Nash,  
James Bentley, Philip Coulam-Jones,  
and Anil Kokaram*



## DEPARTMENTS

- 4 SMPTE Officers
- 6 Corporate Members
- 7 New SMPTE Standards
- 8 From the Top:  
Hello SMPTE Community!
- 10 SMPTE at the NAB Show 2025:  
Innovation and Action
- 13 Spotlight: Marcelle Rutherford
- 55 Retrospective: Historical Briefs  
from Past Issues



The Society of Motion Picture and Television Engineers, Inc., 50 Main Street, Suite 1000, White Plains NY, 10606

**EXECUTIVE**  
Polly Hickling  
*Education Vice President*

**Jaclyn Pytlarz**  
*Chair/Board of Editors*

**John Belton**  
**Thomas Edwards**  
**Catherine Meininger**  
**James E. O'Neal**  
*Associate Editors*

**Sally-Ann D'Amato**  
*Executive Director*

**Neil A. Shaw**  
*Guest Editor*

**JOURNAL STAFF**  
Maja Davidovic  
*Director of Education*  
education@smpte.org

**Dianne Purrier**  
*Managing Editor, Digital and Print Publications*  
journal@smpte.org

**Anthony Catalano**  
*Executive Account Manager, Advertising Sales & Sponsorships*  
sales@smpte.org

**Jeffrey Victor**  
*Advertising Sales North America*  
jvictor@smpte.org

*SMPTE Motion Imaging Journal* (ISSN: 1545-0279) published 7 times per year by the Society of Motion Picture and Television Engineers, Inc., 50 Main Street, Suite 1000, White Plains NY, 10606. Periodicals postage paid at White Plains, NY, and at additional mailing office. Copyright © 2025 by the Society of Motion Picture and Television Engineers, Inc. No part of this issue may be reproduced without written permission of the publisher. Statements and opinions expressed in articles or editorials in the *SMPTE Motion Imaging Journal* are expressions of contributors and do not necessarily represent the policies or opinions of the Society. A complete list of SMPTE membership types and benefits is available at [www.smpte.org](http://www.smpte.org). Advertisements appearing in this publication are the sole responsibility of the advertiser. Subscription rates: SMPTE Members, \$35 USD, included in membership dues; print subscription: \$1,000 (shipping included); SMPTE owns the copyrights to all published material, unless otherwise stated. *SMPTE Motion Imaging Journal* is registered with Canada Post: CPM# 41003019.

POSTMASTER: Send change of address to *SMPTE Motion Imaging Journal*, 50 Main Street, Suite 1000, White Plains NY, 10606. All rights reserved.  
PRINTED IN THE USA

DOI: 10.5594/JMI.2025/EYTR5816  
Date of publication: 15 May 2025