

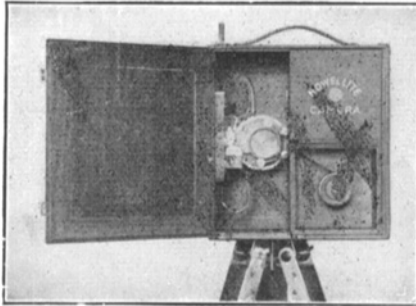
As pioneers in the manufacture of motion picture film—for it was Eastman Film that first made motion pictures practical—the Eastman Kodak Company has from the beginning been identified with the success of the motion picture industry. One could hardly have advanced to its present stage of development without the other.

*Identifiable by the words "Eastman"
and "Kodak" in the film margin*

EASTMAN KODAK COMPANY
ROCHESTER, N. Y.

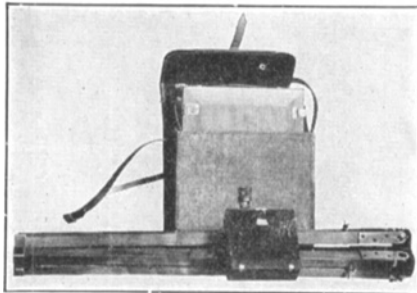
The "Howellite" Movie Camera

Send
For
Illustrated
Circular



Send
For
Sample
Print
of
Film

Takes 200
Ft. of
Standard
Film



Complete with Tripod,
4 Magazines and Carry Case
\$100.00

Howells Cine Equipment Co., Inc.

JOE HORNSTEIN, General Manager

740 7th Ave.

NEW YORK

Motion Picture News

729 7TH AVENUE
NEW YORK CITY

Member—

AUDIT BUREAU OF CIRCULATIONS

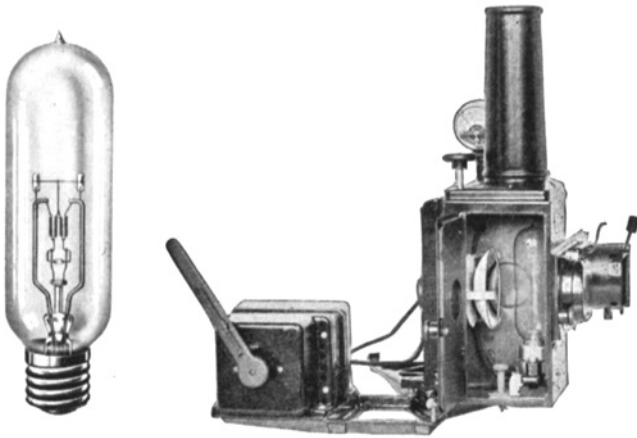
When Buying Advertising Demand an
Audited Circulation by the A. B. C.

Good projection requires—

Light of the proper spectral character, so that the relative values of the different parts of the picture will be rendered correctly.

Uniform distribution of the light over the film and screen.

Simple and positive operation.



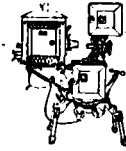
Use National MAZDA Motion Picture Lamps with the G. E. Incandescent Lamp Projector to obtain the maximum satisfaction in projection.

Over one thousand theatre exhibitors have already obtained savings of from one-third to two-thirds in operating costs with this equipment.

For further information and recommendation, write

NELA SPECIALTIES DIVISION
National Lamp Works of General Electric Company
NELA PARK, CLEVELAND

POWER'S IMPROVEMENTS
and
POWER'S PRODUCTS



POWER'S 6B IMPROVED PROJECTOR

Power's Type E Lamp and Lamphouse

Power's Governor Type Mechanical Speed Control

Power's Multiple Coil Rheostat

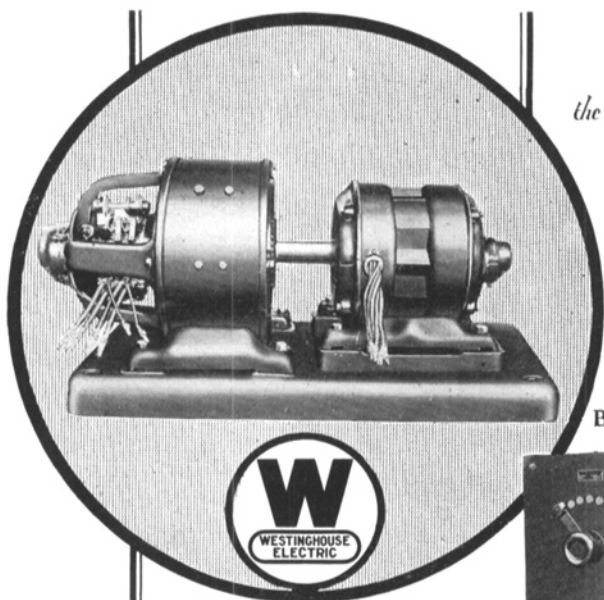
Power's Roller Pin Intermittent Movement

IMPROVEMENTS ADOPTED

Power's G E High Intensity Arc Lamp

Power's G E Incandescent Equipment





the Motor Generator

Ballast Rheostat



*Two Facts—
That Sell
Westinghouse*

Westinghouse Motion Picture Motor-Generators are a reliable source of direct current for operating the projection machine arc and further—

With Westinghouse Equipment any number of arcs of different amperage can be operated simultaneously—the number being limited only by the size of the motor-generator.

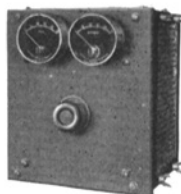
WESTINGHOUSE
Electric & Manufacturing Co.
EAST PITTSBURGH, PA.

Sales Offices and Distributors in
All Principal Cities

Type A Autostarter



Panel



Westinghouse
MOTION PICTURE THEATRE EQUIPMENT

The CRAFTSMEN FILM LABORATORIES *Inc.*

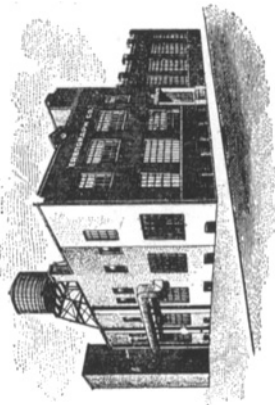
L. Abrahams, *Pres.* L. J. San *Vice Pres. & Gen. Mgr.* J. R. Brophy *Vice Pres. & Sales Mgr.*

The
COMPLETE LABORATORY"
under Ownership Supervision

For NEGATIVE DEVELOPING
*A Specialized and
Separate Department*
For TITLE WORK
*Largest & Most Complete
outfit in the Country
Supervision - Louis Meyer*
For RELEASE WORK
Capacity, Quality, Speed

251 West 19th St.
New York City
Phone — Watkins 7620

LUDWIG G. B. ERB,
PRESIDENT



LABORATORIES AND STUDIO

ERBOGRAPH

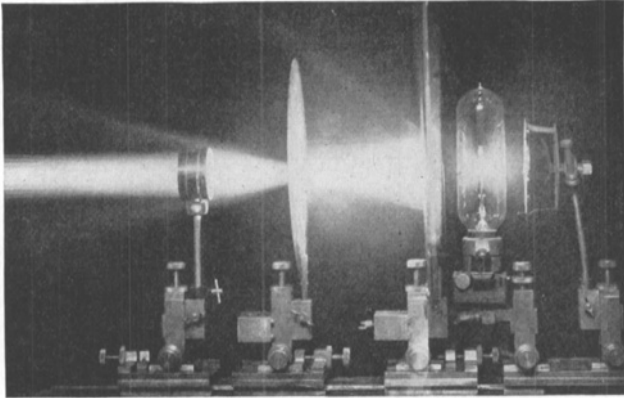
TRADE MARK REG. U.S. PAT. OFF.

**MOTION PICTURE
DEVELOPING AND
PRINTING**

TELEPHONE AUDUBON 3716

203 TO 211 W. 146 TH ST., NEW YORK CITY





There is an EDISON MAZDA Lamp for every class of projection work.

Our experience and engineering facilities are at your service.

EDISON LAMP WORKS

of

GENERAL ELECTRIC COMPANY
Harrison, N. J.

